

ANEMOSTAT[®]

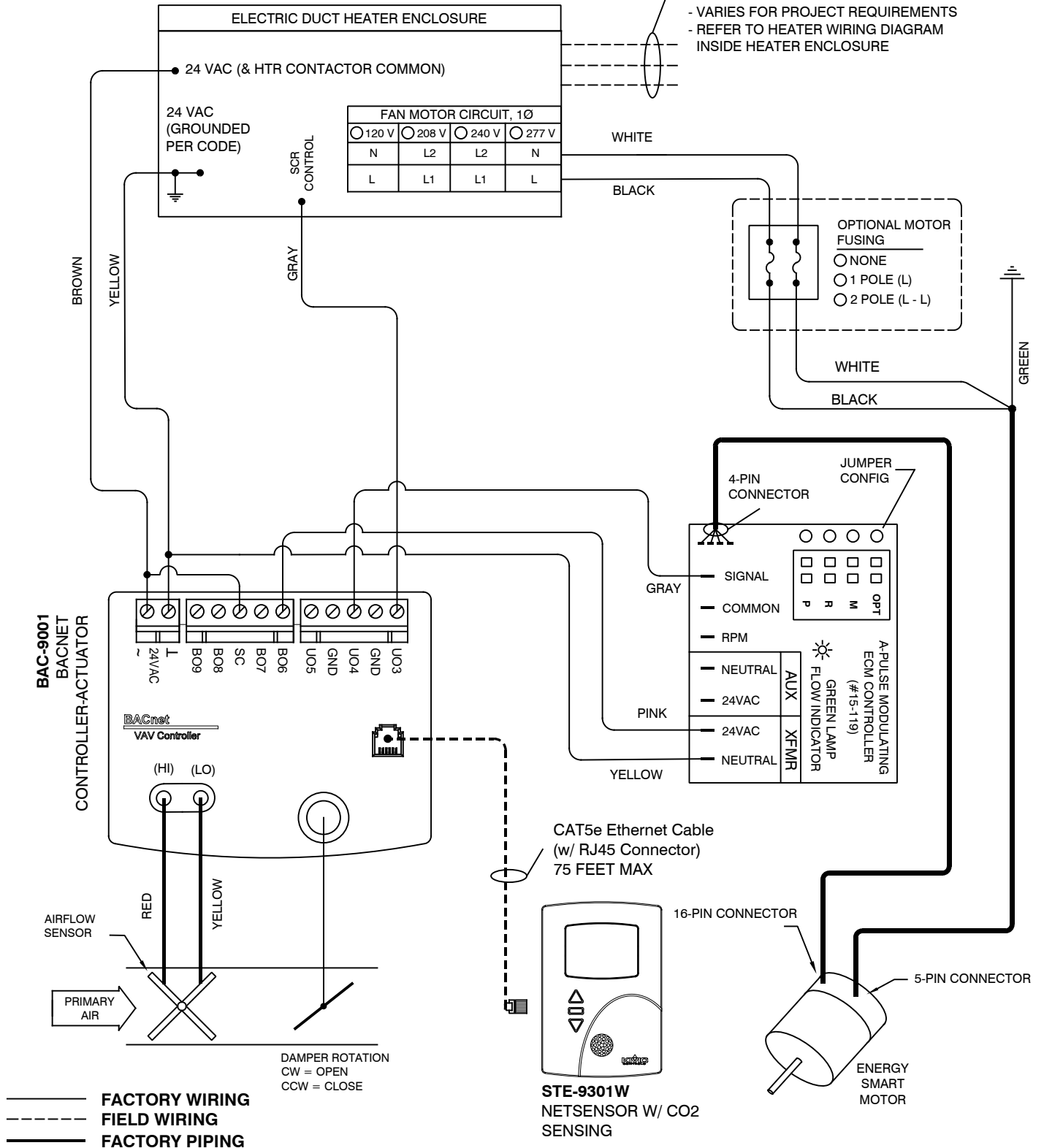
SERIES FAN AIR TERMINAL

Control Package

EP - D - 9005C

- PARALLEL FAN AIR TERMINAL
- ENERGY SMART EC MOTOR
- ELECTRIC HEAT - PROPORTIONAL CONTROL SCR
- CONQUEST BACNET DDC
- HEATER AIR FLOW SWITCH
- STE-9301W T-STAT W/ CO2 SENSING

HEATER POWER SUPPLY
 - VARIES FOR PROJECT REQUIREMENTS
 - REFER TO HEATER WIRING DIAGRAM
 INSIDE HEATER ENCLOSURE



JOB NAME:
SUBMITTED BY:
DATE:

DWG #: EP-D-9005C
REV: -
DATE: 11-28-17