

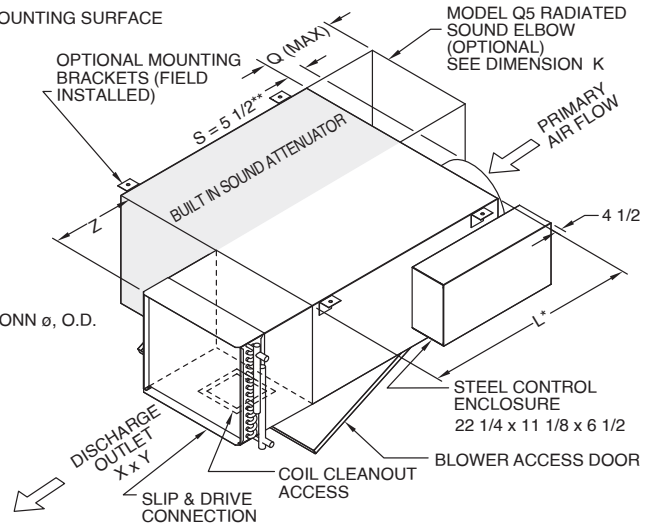
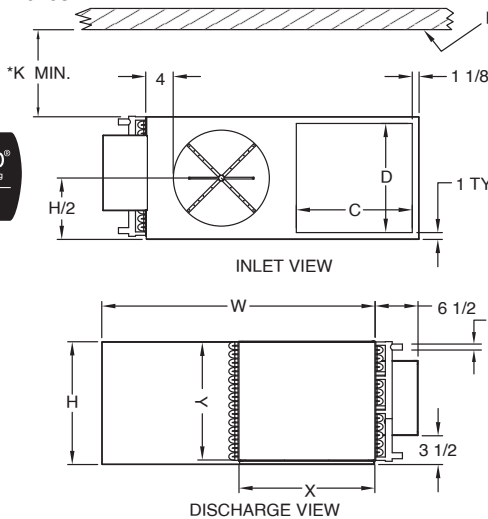
SUBMITTAL SHEET
www.anemostat-hvac.com

PRODUCT FEATURES

- AHRI 880 certified / ETL listed (UL 1995).
- Integral sound attenuator.
- Optional: Q5 Induction Port Sound Elbow
- Single point electrical connection.
- Swing-down blower access panel (6" vertical clearance for removal, 30" for 90 degree swing)
- Steel control enclosure Screw attached cover Hinged front cover
- High-efficiency, Energy Saving EC motor.
- Fan Motor Voltage: 120v,1ø 277v,1ø 208v,1ø 240v,1ø
- Solid state speed controls for stand alone operation or BAS integration.
- Rigid 20 gauge zinc-coated steel construction.
- 1" dual density insulation is standard (NFPA 90A & UL 181).
- Optional:
 - 1/2" 1" foil-faced glass fiber insulation
– metal taped edges (ASTM C665)
 - Double wall construction (22 gauge steel & 1/2" insulation is standard)
 - Lo-Temp casing construction (1" Insulation is standard)
 - 3/8" fiber-less closed cell foam insulation (NFPA255, UL181)
 - No insulation
- 1 or 2 row hot water coils with 1/2" o.d. copper tubes thru aluminum corrugated fins @ 10 per inch. Choice of right hand or left hand connection position.

- 90° inlet damper with leak resistant perimeter seal limiting leakage to <1% of max rated flow at 3" w.g. inlet static pressure.
 - Multi-Point center averaging Velocity Wing air flow sensor for accuracy to ± 5% of design flow.
 - Optional flow taps / tees
 - Accepts flanged discharge duct connection.
 - Optional: Slip & drive cleat discharge collar
 - Left hand control position.
 - Optional Accessories:
 - Filter rack and T/A Filter 1" 2" 4" < Merv 4 Merv 8 Merv 13
 - Unit mounting brackets (field installed)
 - Disconnect switch, line voltage
 - Power fusing, line voltage
 - Fan relay, 24vac (for use with DDC controls)
 - Electric actuator, 24vac 3-wire tri-state
 - Transformer, 24vac, 40va
 - Control System - Direct Digital, Analog Electronic, Pneumatic, or Field Installed
- Notes:**
- Weights are an estimation and will vary based on selection options, insulation type, etc.
 - Add 1" to L dimension and **reduce dimension S to 4 1/2" for double wall and low temperature option.
 - K dimension required with optional Q5 sound elbow

All dimensions are in inches.



UNIT SIZE	MOTOR H.P.	INLET DIA	HEIGHT H	WIDTH W	LENGTH L	K MIN	Q	INDUCTION		DISCHARGE		1 ROW COIL			2 ROW COIL		
								C	D	X	Y	Z	LB	CONN O.D.	Z	LB	CONN O.D.
ESTW-17	1/6	05 - 08	18	32	36	6	18	12	16	16	15	12-1/4	133	7/8	13-1/2	137	1/2
ESTW-33	1/3	05 - 10						20	17-1/2	12-1/4	138	7/8	13-1/2	141	7/8		
ESTW-50	1/2	05 - 14	18	40	40	6	18	17	16	20	17-1/2	12-1/4	159	7/8	13-1/2	164	7/8
ESTW-75	3/4	05 - 14	20	48	48	8	20	21	18	24	17-1/2	12-1/4	207	7/8	13-1/2	212	7/8
ESTW-10	1	05 - 16										12-1/4	211	7/8	13-1/2	217	7/8

JOB NAME:

SUBMITTED BY:

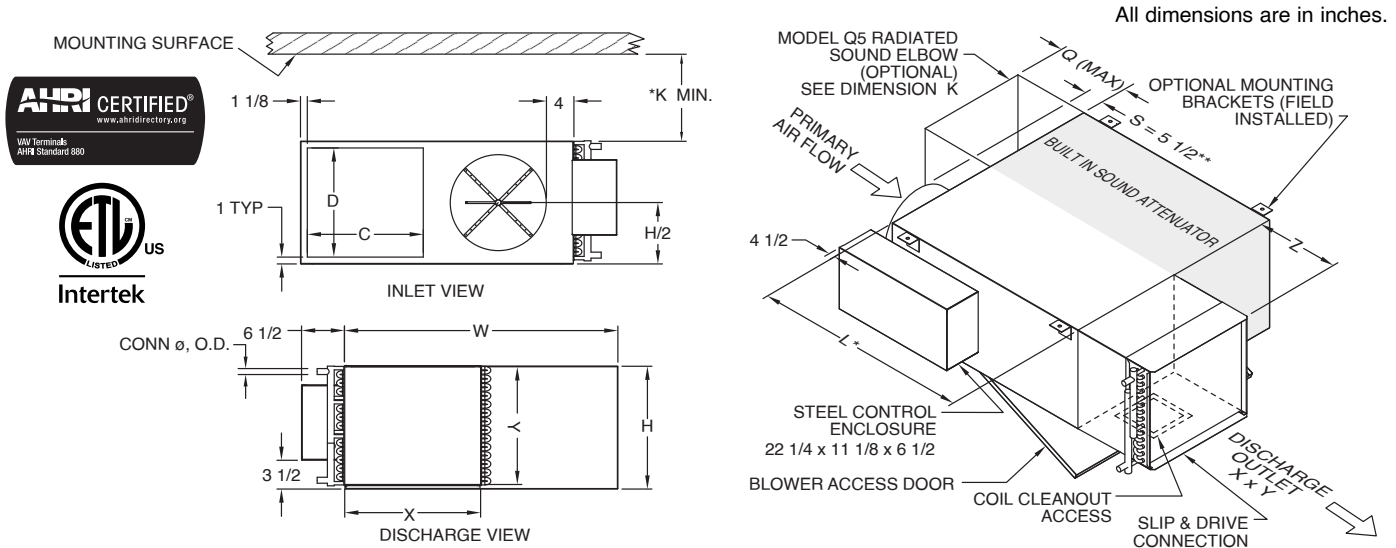
SUBMITTAL SHEET

www.anemostat-hvac.com

PRODUCT FEATURES

- AHRI 880 certified / ETL listed (UL 1995).
- Integral sound attenuator.
- Optional: Q5 Induction Port Sound Elbow
- Single point electrical connection.
- Swing-down blower access panel (6" vertical clearance for removal, 30" for 90 degree swing)
- Steel control enclosure Screw attached cover Hinged front cover
- High-efficiency, Energy Saving EC motor.
- Fan Motor Voltage: 120v,1ø 277v,1ø 208v,1ø 240v,1ø
- Solid state speed controls for stand alone operation or BAS integration.
- Rigid 20 gauge zinc-coated steel construction.
- 1" dual density insulation is standard (NFPA 90A & UL 181).
- Optional:
 - 1/2" 1" foil-faced glass fiber insulation – metal taped edges (ASTM C665)
 - Double wall construction (22 gauge steel & 1/2" insulation is standard)
 - Lo-Temp casing construction (1" Insulation is standard)
 - 3/8" fiber-less closed cell foam insulation (NFPA255, UL181)
 - No insulation
- 1 or 2 row hot water coils with 1/2" o.d. copper tubes thru aluminum corrugated fins @ 10 per inch. Choice of right hand or left hand connection position.

- 90° inlet damper with leak resistant perimeter seal limiting leakage to <1% of max rated flow at 3" w.g. inlet static pressure.
 - Multi-Point center averaging Velocity Wing air flow sensor for accuracy to ± 5% of design flow.
 - Optional flow taps / tees
 - Accepts flanged discharge duct connection.
 - Optional: Slip & drive cleat discharge collar
 - Right hand control position.
 - Optional Accessories:
 - Filter rack and T/A Filter 1" 2" 4" < Merv 4 Merv 8 Merv 13
 - Unit mounting brackets (field installed)
 - Disconnect switch, line voltage
 - Power fusing, line voltage
 - Fan relay, 24vac (for use with DDC controls)
 - Electric actuator, 24vac 3-wire tri-state
 - Transformer, 24vac, 40va
 - Control System - Direct Digital, Analog Electronic, Pneumatic, or Field Installed
- Notes:**
- Weights are an estimation and will vary based on selection options, insulation type, etc.
 - Add 1" to L dimension and **reduce dimension S to 4 1/2" for double wall and low temperature option.
 - K dimension required with optional Q5 sound elbow



UNIT SIZE	MOTOR H.P.	INLET DIA	HEIGHT H	WIDTH W	LENGTH L	K MIN	Q	INDUCTION		DISCHARGE		1 ROW COIL		2 ROW COIL			
								C	D	X	Y	Z	LB	CONN O.D.	Z	LB	CONN O.D.
ESTW-17	1/6	05 - 08	18	32	36	6	18	12	16	16	15	12-1/4	133	7/8	13-1/2	137	1/2
ESTW-33	1/3	05 - 10								20	17-1/2	12-1/4	138	7/8	13-1/2	141	7/8
ESTW-50	1/2	05 - 14	18	40	40	6	18	17	16	20	17-1/2	12-1/4	159	7/8	13-1/2	164	7/8
ESTW-75	3/4	05 - 14	20	48	48	8	20	21	18	24	17-1/2	12-1/4	207	7/8	13-1/2	212	7/8
ESTW-10	1	05 - 16										12-1/4	211	7/8	13-1/2	217	7/8

JOB NAME:

SUBMITTED BY: