

# SUBMITTAL SHEET


 Model **FF-L9**  
**ARCHITECTURAL**  
**LINEAR DIFFUSER**  
 9/16" LAY-IN T-BAR  
 2", 2-1/2", 3" SLOT WIDTHS

**PRODUCT FEATURES**

- Linear slot diffuser for 9/16" Lay-In T-Bar Grid Systems
- Internal controllers adjustable for pattern and volume control

**CONSTRUCTION FEATURES**

- Material:**  
Extruded aluminum
- Finish:**
- Arctic White (Black Pattern/Volume Controllers)
  - Natural Anodize (Black Pattern/Volume Controllers)
  - Custom Color : \_\_\_\_\_

**SUPPLY MODELS**

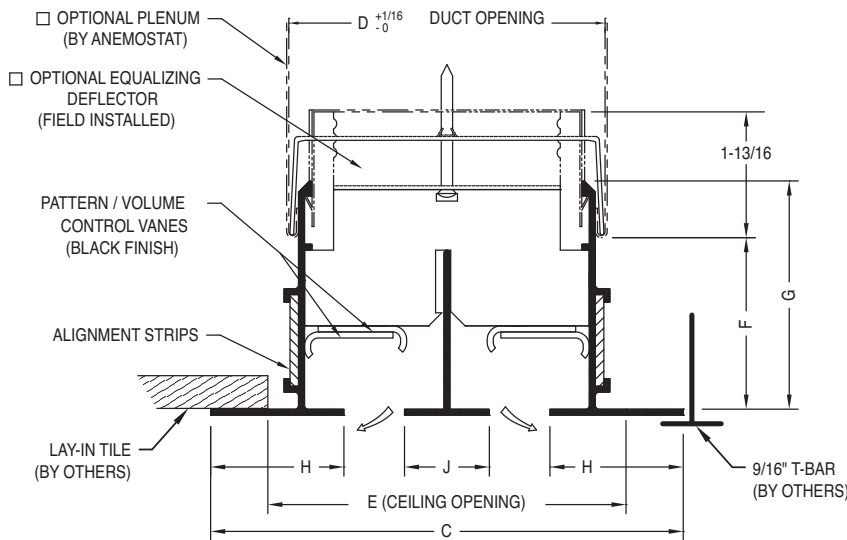
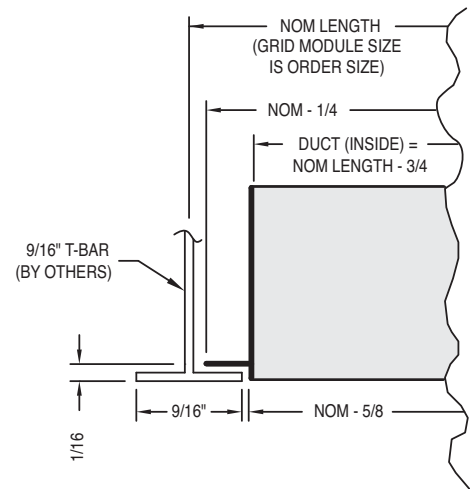
- FF-L9-200** 2" Slot Width (1-4 slots)
- FF-L9-250** 2-1/2" Slot Width (1-4 slots)
- FF-L9-300** 3" Slot Width (1-4 slots)

**RETURN MODELS** (No Internal Controllers)

- FFR-L9-200** 2" Slot Width (1-4 slots)
- FFR-L9-250** 2-1/2" Slot Width (1-4 slots)
- FFR-L9-300** 3" Slot Width (1-4 slots)

**OPTIONS**

- LEC** Linear Egg Crate
- LED** Linear Equalizing Deflector
- AD** Plenum

**SECTION VIEW**  
**2 SLOT SHOWN**

**END DETAIL**


FF-L9-200 • 2" SLOT WIDTH							
# SLOTS	C	D	E	J	F	G	H
1	5-1/2	4-5/16	4-3/8	-	1-25/32 to 2-5/32	2-5/8	1-3/4
2	9-1/2	8-5/16	8-3/8	2			
3	13-1/2	12-5/16	12-3/8	2			
4	17-1/2	16-5/16	16-3/8	2			

FF-L9-250 • 2-1/2" SLOT WIDTH							
# SLOTS	C	D	E	J	F	G	H
1	6-1/2	5-5/16	5-3/8	-	2-1/4 to 2-5/8	3-3/32	2
2	11-1/2	10-5/16	10-3/8	2-1/2			

FF-L9-300 • 3" SLOT WIDTH							
# SLOTS	C	D	E	J	F	G	H
1	7	6-5/16	6-3/8	-	2-3/8 to 2-3/4	3-7/32	2
2	13	12-5/16	12-3/8	3			

All dimensions are in inches.

**JOB NAME:**
**SUBMITTED BY:**