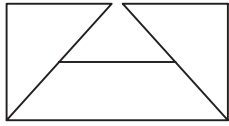


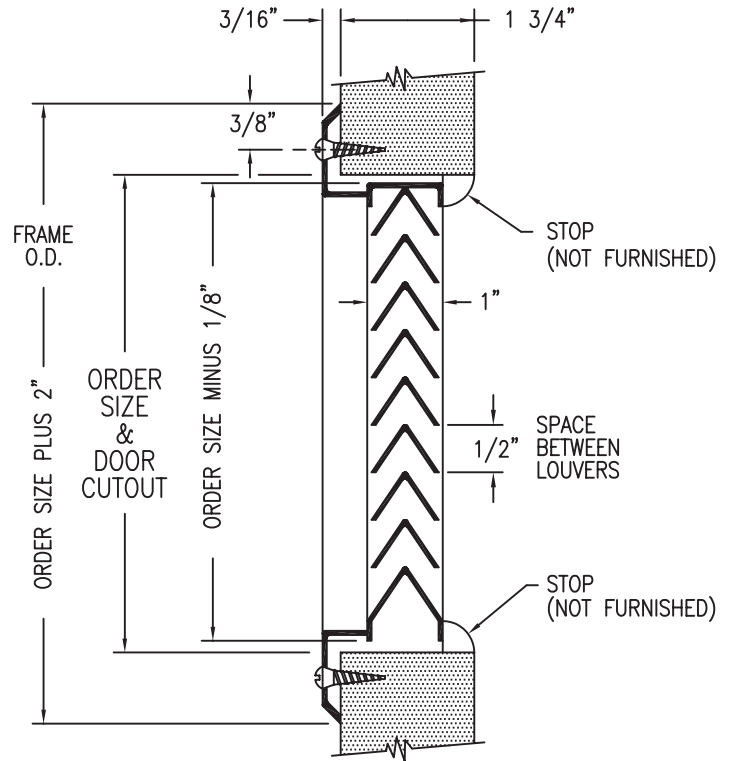
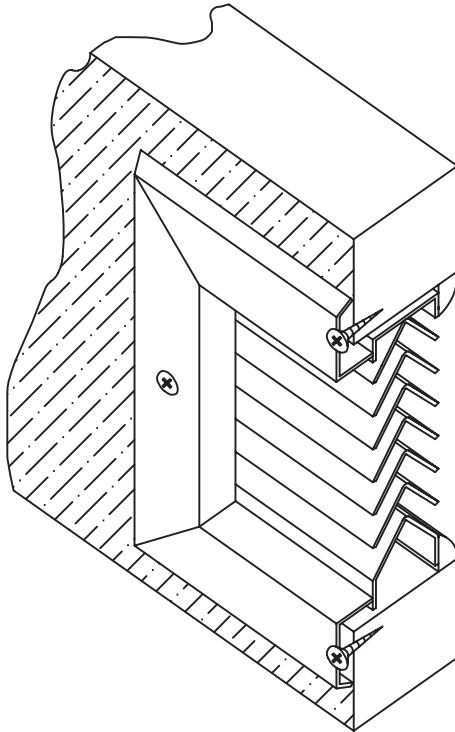
# SUBMITTAL SHEET



® from: **ANEMOSTAT**®

CARSON CA  
310-835-7500

MODEL  
**CHDL-1F**  
INVERTED 'V' LOUVER  
NON VISION  
LOUVER CORE WITH  
FRAME ONE SIDE



All Dimensions  $\pm 1/32$

### STANDARD PRODUCT FEATURES

- MATERIAL: 18 GA. Cold Rolled Steel - Frame, 22 GA. Cold Rolled Steel - Louver Blades.
- FINISH: Arctic White, Baked-On
- INSTALLATION: Installs into door or frame using #8x3/4" sheet metal or wood screws directly into the door or frame on one side. The Louver core side requires use of wood or metal stop.
- DOOR or FRAME THICKNESS: Minimum Louver core and one side frame dimension is 1 9/16".
- USES: Where there is a application requiring a minimal clearance on one side of Louver core and need attaching flange (frame).
- FREE AIR FLOW: 60% Free Area.
- NOTE: For Exterior use, High Humidity or Salt Air application, product must be Galvanized or Stainless Steel.

### OPTIONAL FEATURES

- MATERIAL: #304 Stainless Steel, #4 Finish Satin, Galvanized (Sheet Hot Dipped or Zinc Plated), Mill Finish Aluminum (#5052)
- FINISH: Special order Baked Enamel Colors (as per sample chip, supplied by customer).
- FASTENERS: Special Security Screw Fasteners, See Page 10, this section.
- SPECIALS: Fractional sizes (frame dimension is increased to accommodate odd size). Mesh insect screens, loose or attached. (Galvanized, Aluminum, Charcoal Aluminum, Stainless Steel.)
- DOOR THICKNESS: 1 3/8" is available by special order.

### FIRE RATINGS

- CHDL-1F is not fire rated.

All Dimensions are in Inches

JOB NAME:	SUBMITTED BY:
LOCATION:	
ARCHITECT:	
ENGINEER:	DWG # LOV-0006
CONTRACTOR:	DATE 6-15-05 REV C

554A101AA1