

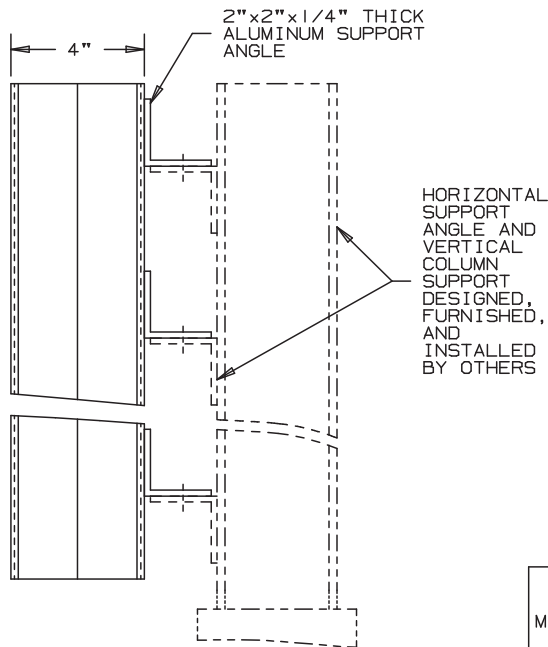


# Anemostat®

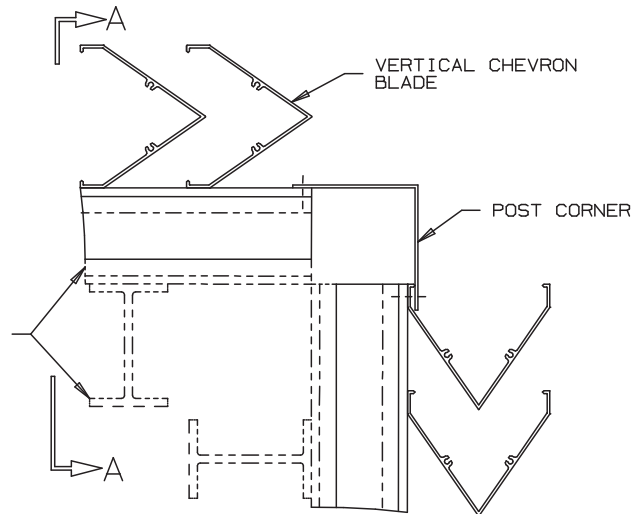
AIR DISTRIBUTION

MODEL **SCV34**

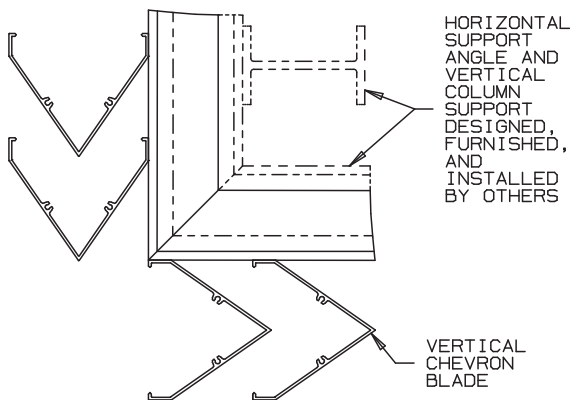
## EXTRUDED ALUMINUM LOUVERS EQUIPMENT SCREEN



SECTION A-A  
NOT TO SCALE



POST CORNER DETAIL



MITERED CORNER DETAIL

### SPECIFICATIONS

**MATERIAL:** EXTRUDED ALUMINUM 6063-T52/T6 ALLOY. .081" THICK (NOMINAL). BLADES SPACED APPROXIMATELY 3" ON CENTER WITH ARCHITECTURAL STYLE HIDDEN MULLIONS.

**SUPPORTS:** SHALL INCORPORATE REAR ANGLE 2"x2"x1/4" EXTRUDED ALUMINUM TO WITHSTAND WINDLOAD OF 20 PSF, APPROXIMATELY 90 MPH WIND. SPACED ON 60" CENTERS.

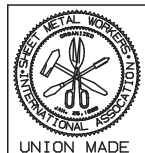
**LOUVER SIZE:** MAXIMUM PANEL SIZE LIMITED TO 60 S.F. PER SECTION, NOT TO EXCEED 120" WIDE AND 72" HIGH. LOUVER SECTIONS LARGER THAN FACTORY MAXIMUM SIZE WILL REQUIRE FIELD ASSEMBLY OF SMALLER SECTIONS.

**SCREEN:** NONE REQUIRED.

**FINISH:** MILL.

**VARIATIONS -** LOUVER VARIATIONS AVAILABLE AS MITERED CORNER, POST CORNER, HINGED ACCESS, AND CAP COVERS.

**ARCHITECTURAL FINISHES:** AS KYNAR, BAKED ENAMEL, CLEAR AND COLOR ANODIZE ARE AVAILABLE. CONSULT THE FACTORY.



**Anemostat Air Distribution**  
1220 E. Watson Center Road  
Carson, CA 90745  
310-835-7500 • air@anemostat.com  
www.anemostat-hvac.com

AGENT : \_\_\_\_\_

ARCH./ENG. :

CONTR. :

PROJECT :

EDR:                      ECN:                      JOB:

DATE:                      DWN. :                      DWG. :