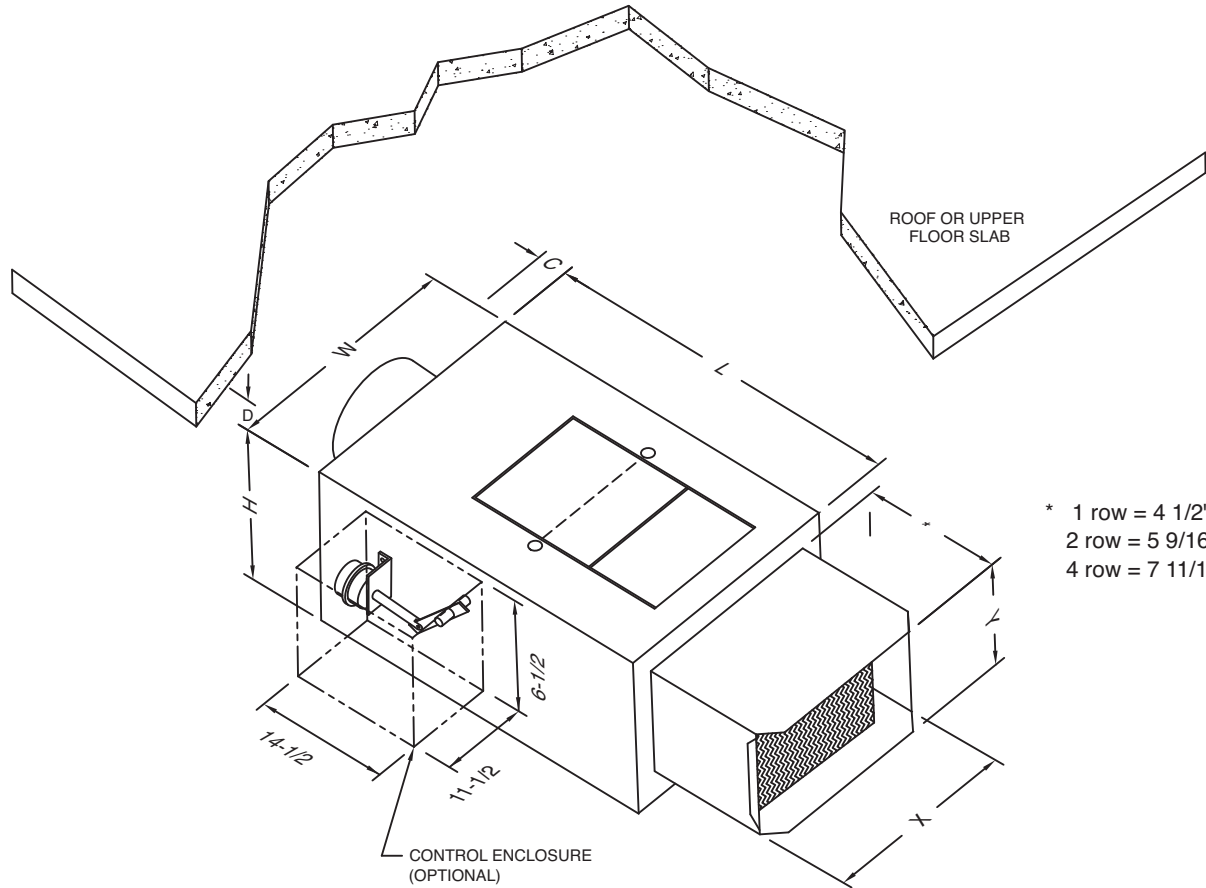


PRODUCT FEATURES

- Corrosion Resistant Coated Steel Casing
- No Access Doors Required
- Acoustical Thermal Glass Fibre Insulation Coated to Prevent Erosion. Meets Requirements of NFPA Bulletin 90A & UL181.
- Slip & Drive Type Connection for Maximum Installation Adaptability.
- Easily Adjustable Relief Port Damper.
- Nylon Bearings on Moving Parts.



* 1 row = 4 1/2"
2 row = 5 9/16"
4 row = 7 11/16"

D = MIN CLEARANCE REQ'D FOR RELIEF AIR FLOW

Box Size	CFM Range	Inlet	L	W	H	C	D	Plenum Height (D+H)	X	Y	COIL CONN. OD		
											1 ROW	2 ROW	4 ROW
5A	80-160	Ø5	24-11/16	10	9-1/2	4	4	13-1/2	10	10	1/2	1/2	7/8
6A	120-300	Ø6	24-11/16	10	9-1/2	4	4	13-1/2	10	10	1/2	1/2	7/8
7A	180-420	Ø7	24-11/16	10	9-1/2	4	4	13-1/2	10	10	1/2	1/2	7/8
8A	240-500	Ø8	24-11/16	10	9-1/2	4	4-1/2	14	10	10	1/2	1/2	7/8
8B	400-640	Ø8	24-11/16	13	9-1/2	4	4-1/2	14	12	10	1/2	1/2	7/8
10C	600-900	Ø10	27-11/16	20	11-1/2	4	4	15-1/2	12	10	1/2	1/2	7/8
12D	800-1400	Ø12	27-11/16	20	13-1/2	4	4	17-1/2	14	12-1/2	1/2	1/2	7/8
14E	1200-1800	12x12	30-11/16	24	13-1/2	4	5	18-1/2	14	12-1/2	1/2	1/2	7/8
16E	1600-2400	16x12	30-11/16	24	13-1/2	4	6	19-1/2	14	12-1/2	1/2	1/2	7/8

All dimensions are in inches.

JOB NAME:

SUBMITTED BY: