

**PRODUCT FEATURES**

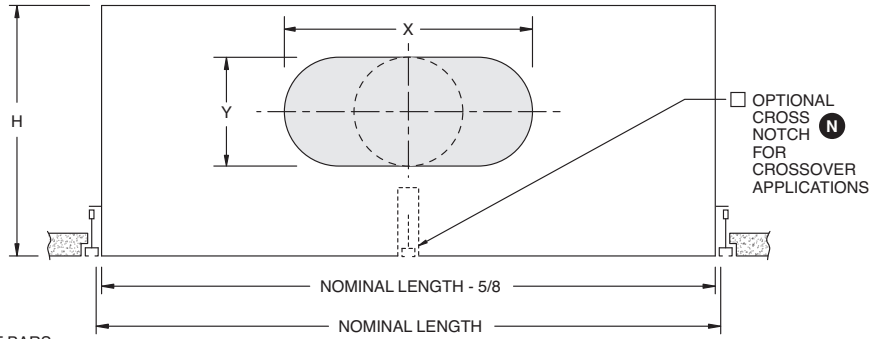
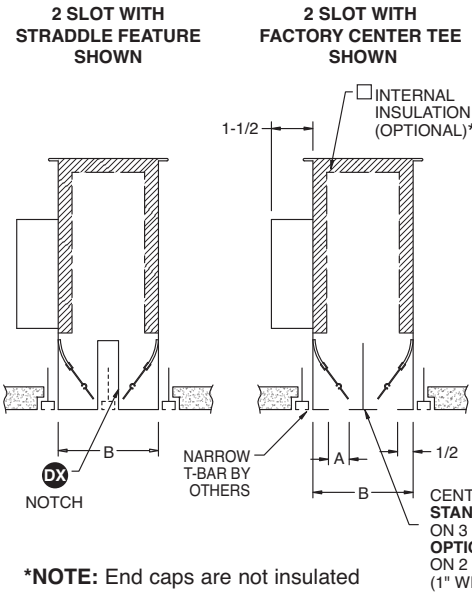
- 1,2,3, or 4 parallel slots integrated into a coated steel supply plenum
- 3/4", 1", 1-1/2" slot widths
- 24", 36", 48", 60" nominal lengths (custom lengths available)

**CONSTRUCTION DETAILS**

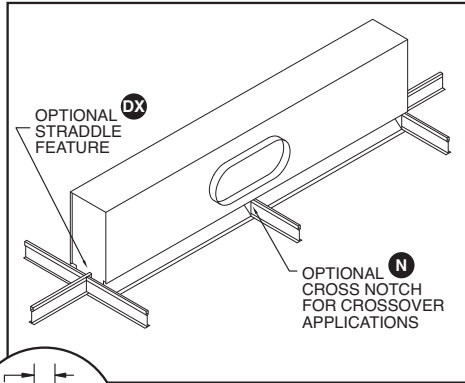
- Material:** 24 GA Zinc-Coated Steel  
**Finish:** Flat black on exposed Diffuser Face surfaces (**std**)  
Factory attached T-Bars are white
- Custom Colors (opt)

**MODELS**

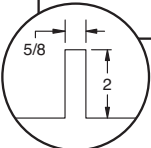
- SCD-D** All center Tees included
- SCD-D-N** 2' x 2' Crossover, All center Tees included (notch in center of 4' plenum)
- SCD-DX** Straddle (2 slot only - NO center Tee). Unit includes notched end caps for grid member.
- SCD-DX-N** Combination Crossover and Straddle feature (2 slot only)



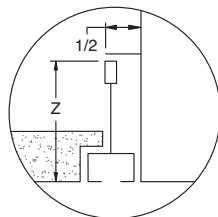
\*NOTE: End caps are not insulated



TYPICAL 2 SLOT INSTALLATION



DX & N NOTCH DETAIL



9/16" NARROW SLOT END EDGE DETAIL L

	SLOT WIDTH A	B					NOM LENGTH
		1-SLOT	2-SLOT (Center T)	2-SLOT (DX Straddle)	3-SLOT	4-SLOT	
<b>SCD-75</b>	3/4"	1-3/4	3-1/2	4-1/8	5-1/4	7	24, 30, 36, 48, 60
<b>SCD-10</b>	1"	2	4	4-5/8	6	8	
<b>SCD-15</b>	1-1/2"	2-1/2"	5	5-5/8	7-1/2	10	

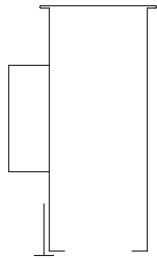
		Inlet Size	X	Y	H
<b>1 &amp; 2 SLOT</b>	5" Ø	4-7/8	4-7/8	8	
	6" Oval	6-13/32	4-7/8	8	
	8" Oval	9-19/32	4-7/8	8	
	10" Oval	12-23/32	4-7/8	8	
	12" Oval	14-5/32	7-7/8	11	
<b>3 &amp; 4 SLOT</b>	5" Ø	4-7/8	4-7/8	11	
	6" Ø	5-7/8	5-7/8	11	
	8" Ø	7-7/8	7-7/8	11	
	10" Oval	11	7-7/8	11	
	12" Oval	14-5/32	7-7/8	11	

All dimensions are in inches.

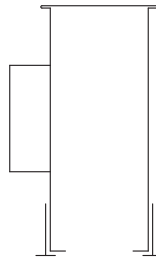
JOB NAME:

SUBMITTED BY:

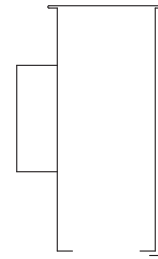
**FACTORY INSTALLED SIDE TEES / CLIPS**  
(FACTORY TEES ARE 1" WIDE - WHITE FINISH)



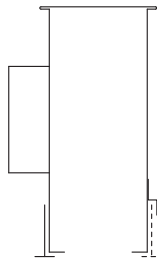
**OPTION 1**  
ONE SIDE TEE  
(INLET SIDE)



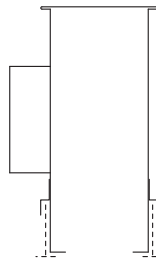
**OPTION 2**  
TWO SIDE TEE



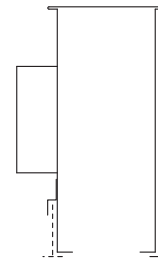
**OPTION 3**  
ONE SIDE TEE  
(NON-INLET SIDE)



**OPTION A**  
ONE SIDE TEE  
(INLET SIDE)  
+ T-BAR CLIPS

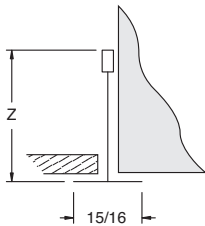


**OPTION B**  
T-BAR CLIPS  
(BOTH SIDES)

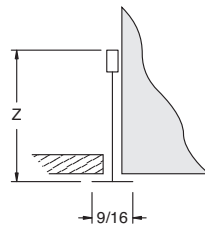


**OPTION C**  
ONE SIDE TEE  
(NON-INLET SIDE)  
+ T-BAR CLIPS

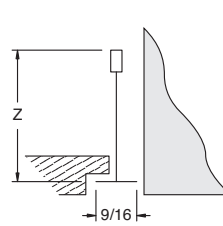
**GRID / CEILING TYPE**



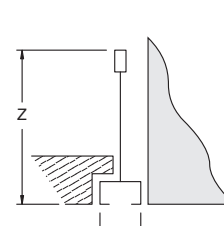
**15/16" LAY-IN**



**9/16" LAY-IN**



**9/16" TEGULAR**



**9/16" NARROW SLOT**

CEILING MANUFACTURER: \_\_\_\_\_

Z = \_\_\_\_\_

MODEL: \_\_\_\_\_

All dimensions are in inches.

**JOB NAME:** \_\_\_\_\_

**SUBMITTED BY:** \_\_\_\_\_