

APPLICATION

- Fixed 1 slot, 1-way throw diffuser used in interior and exterior zones
- Horizontal air pattern for cooling and heating loads
- High induction ratios for rapid mixing and temperature equalization
- Draftless air distribution excellent for VAV applications – blanket of air will not “dump” even at lowest flow rates
- Integrates with inverted T-bar and 9/16" narrow slot grid systems. Adaptable to hard surfaces using mounting frame.

PRODUCT FEATURES

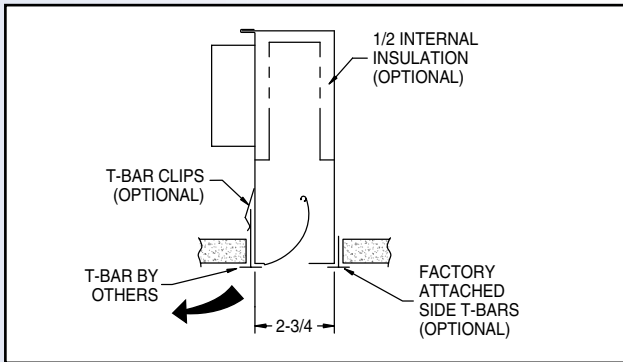
- Aerodynamic, curved deflection vane integrated into a coated steel supply plenum for optimum performance
- 24", 36", 48", 60" nominal lengths
- Integral supply air plenum minimizes air leakage.
- Plenum inlet located as required for ease of installation
- Flat black finish on exposed surfaces
- Model FSR combines both the supply and return in one assembly

OPTIONS

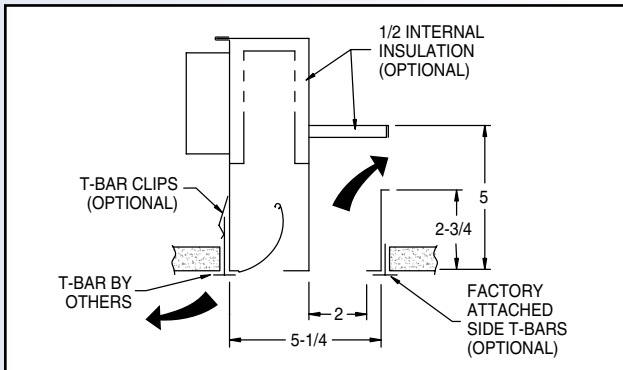
- 1/2" Internal glass fiber insulation. External insulation, and “fiberless” insulating systems available.
- T-Bar Clips
- Side Tees (white)
- Volume damper in inlet.
- Center Notch for pass-thru applications
- Surface mounting frames
- Custom lengths



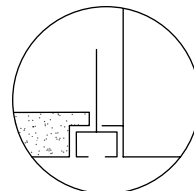
Model FD-L - Supply, Lay-In T-Bar



Model FSR-L - Supply / Return, Lay-In T-Bar



Models FD-D & FSR-D 9/16" Narrow Slot



| OVAL INLET SIZES | DIFFUSER HEIGHT H |
|------------------|-------------------|
| 5, 6, 7 | 8 |
| 8, 10 | 9 |

