

SUBMITTAL SHEET



Anemostat®

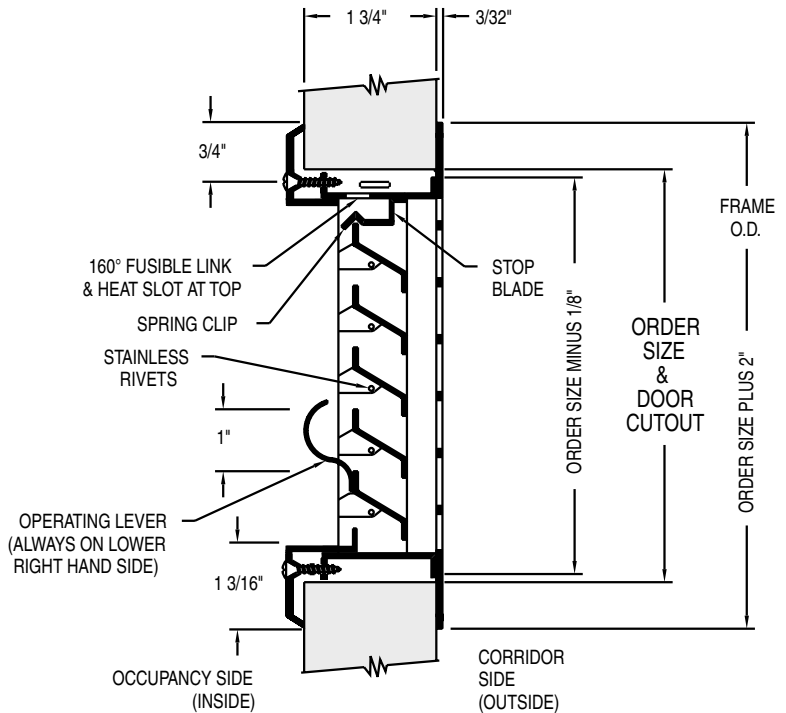
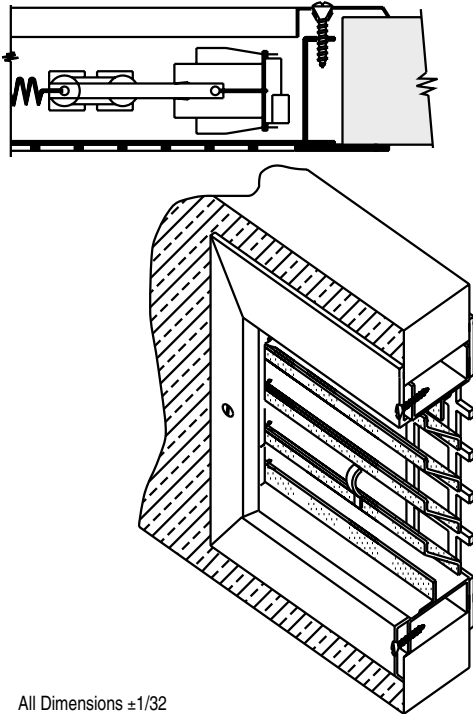
A MESTEK COMPANY

P.O. BOX 4938 • 1220 WATSONCENTER ROAD • CARSON, CA 90745-4206
 (310) 835-7500 • FAX (310) 835-0448
 e-mail: airsec@anemostat.com • website: www.anemostat.com

FLDL-UL-SG1

**MINIMUM SECURITY
 FUSIBLE LINK LOUVER with
 LATTICE FACE PLATE**

FIRE RATED



All Dimensions ±1/32

IMPORTANT: It is the specifier's responsibility to properly configure the HVAC system to meet the appropriate level of comfort, safety, security and detention

PRODUCT FEATURES

Lattice Face Plate - one side - 12 GA

13/16" sq. holes on 1" ctrs. (standard)

Louver Blades

18 GA. (standard)

Material

- Cold Rolled Steel (standard)
- Stainless Steel (optional)
- Galvanized (optional)
 - Zinc Plated
- Other _____

Door Thickness

- 1 3/4" (standard)
- 2" (optional)
- 2 1/4" (optional)

Fasteners

- #8 x 1" Phillips Head Screw (standard)
- Tamperproof _____
- Other _____

Finish

- White Baked Enamel (standard)
- Beige Baked Enamel (optional)
- Bronze Baked Enamel (optional)
- Grey Primer (optional)
- Other _____

Other Options (please specify)

FIRE RATINGS (with UL classification markings)

- 20/45/60/90 Minute: Approved listing (max width 24", max height 24") (min width 12", min height 6")
- **IMPORTANT:** Interpretation of building and fire codes may vary. Consult with the local authority having jurisdiction in your area, to determine appropriate standards.
- **NOTE:** For Exterior use, High Humidity or Salt Air application, product must be galvanized or stainless steel.

SUBMITTAL APPROVAL

Job Name and Location	
Engineer	Date
Mfr. Rep.	Date
Factory	Date
Submitted By	Date

Qty.	Order Size	
	Width	Height