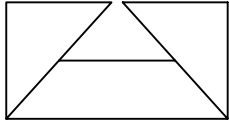


SUBMITTAL SHEET



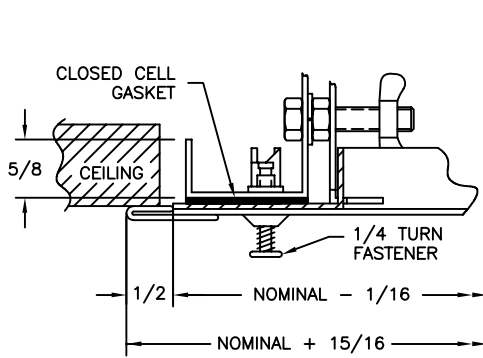
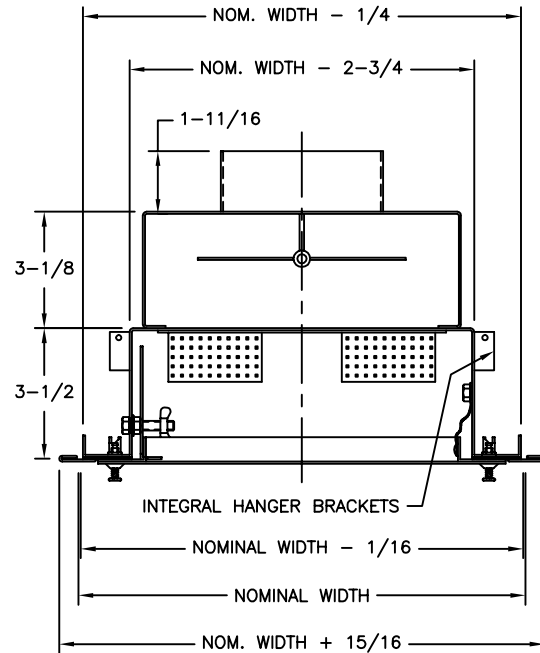
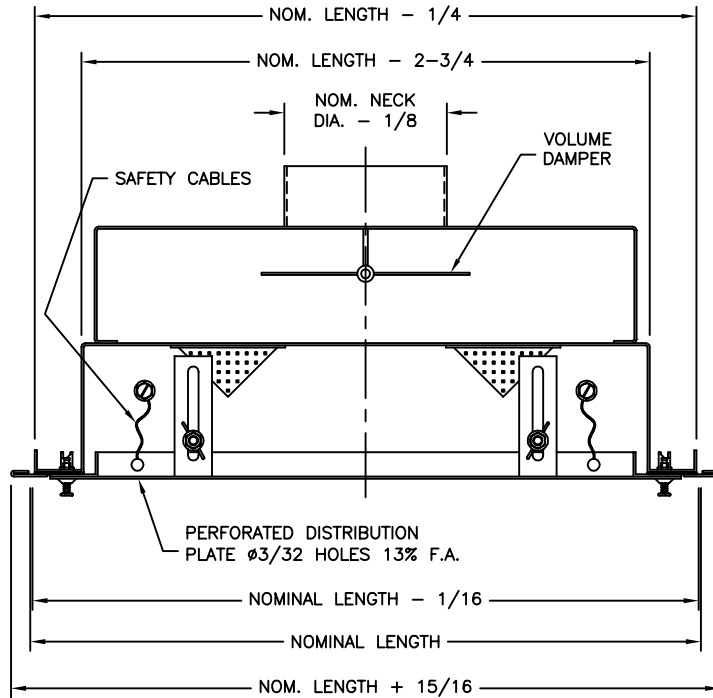
from: **ANEMOSTAT**®

A MESTEK COMPANY

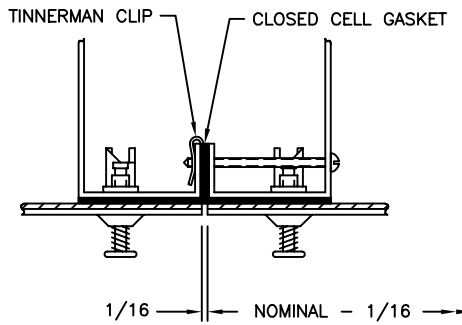
SCRANTON PA
570-346-6586

CARSON CA
310-835-7500

MODEL MVARP
LAMINAR FLOW PANELS
TOP INLET
FLUSH TO SURFACE



SURFACE MOUNTING DETAIL



TYPICAL BUTT JOINT

FEATURES:

1. Upper & Lower Plenums for Maximum Flow Equalization
2. Integral Hanger Brackets to Ease Installation
3. Hinged, Removable Distribution Plate for Cleaning
4. Volume Damper Accessible Thru Face
5. 1/4 Turn Fasteners Attach Face to Frame
6. Two Stainless Steel Safety Cables / Snaps Support Face During Removal
7. Available in Stainless Steel, Steel, Aluminum, or Combinations
8. Available Finishes Include Mill, Anodize, White Epoxy, #4 Stainless
9. For Multiple Diffuser Application, See Batten Arrangements Submittal Drawing #MVD-0003
10. Standard Finish is White

FLOW PANEL DIMENSIONS		
Size	Norm. Size	Max Neck Size
122	12x24	9" DIA
123	12x36	
124	12x48	
125	12x60	
126	12x72	
242	24x24	
243	24x36	
244	24x48	
245	24x60	
246	24x72	18" DIA
363	36x36	
364	36x48	
365	36x60	
366	36x72	

All Dimensions are in Inches

JOB NAME:	SUBMITTED BY:
LOCATION:	
ARCHITECT:	
ENGINEER:	
CONTRACTOR:	DWG # MVD-0026
	DATE 7-12-00 REV