

APPLICATION

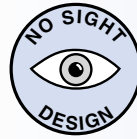
- Versatile supply linear diffuser for wall, ceiling or sill installations.
- Adjustable air discharge pattern for horizontal or vertical directions provides draft free comfort for both heating and cooling.
- Designed for efficient air distribution at cooling differentials up to 30° F.
- SLADs can be used for combination supply/return or return only.
- Continuous runs with active and inactive sections.

PRODUCT FEATURES

- Extruded aluminum construction with attractive, durable finish.
- Pattern control designed for easy adjustment of horizontal or vertical discharge.
- Arctic white outer flanges, center tees and end caps.
- Flat black pattern control element and adjustment vanes for clean architectural look.
- Available in four slot widths, 1/2", 3/4", 1" and 1-1/2".
- Available in single piece lengths from 12" to 72".
- Units for continuous run applications provided with concealed key-ways and alignment strips for exact alignment and clean, neat appearance.
- Assembly hardware - duct mounting brackets, alignment strips, end caps, mounting bracket screws - provided as applicable.

DIFFUSER OPTIONS

- Frames available for surface, lay-in T-bar and 9/16 narrow slot grid systems, and round (spiral) duct.
- Plenums – insulated or non-insulated.
- Mitered corners for ceiling or wall applications.
- Blank-off baffles.
- Equalizing deflectors.
- Eggcrate straighteners.
- Model TBF T-Bar mounting frames.
- Custom colors (provide paint chip or formulation number).
- Mirror polished face surfaces.



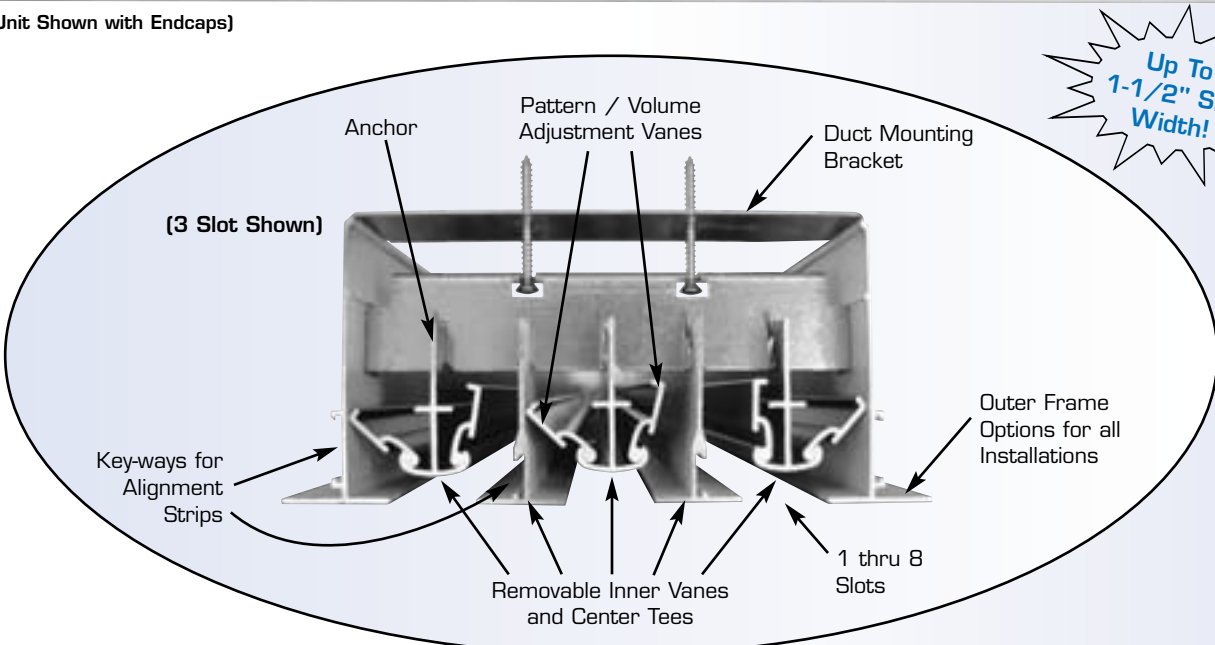
Uniform Appearance Regardless of Pattern Adjustment



(SLAD-FS-75 2 Slot Shown)



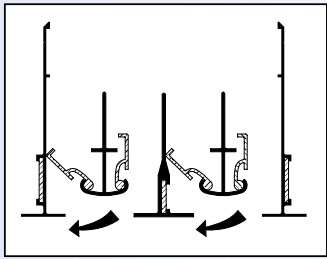
(Full Unit Shown with Endcaps)



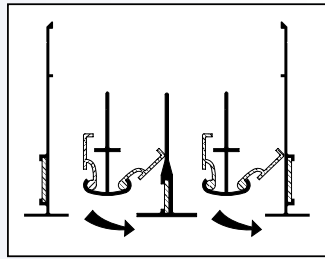
Up To 1-1/2" Slot Width!

PATTERN CONTROL FLEXIBILITY

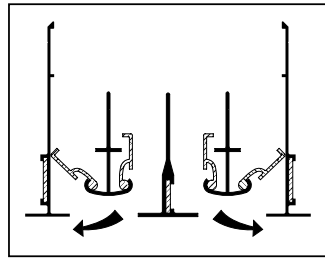
(2 SLOT SHOWN)



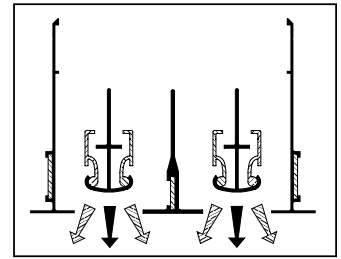
1 WAY LEFT - HORIZONTAL



1 WAY RIGHT - HORIZONTAL



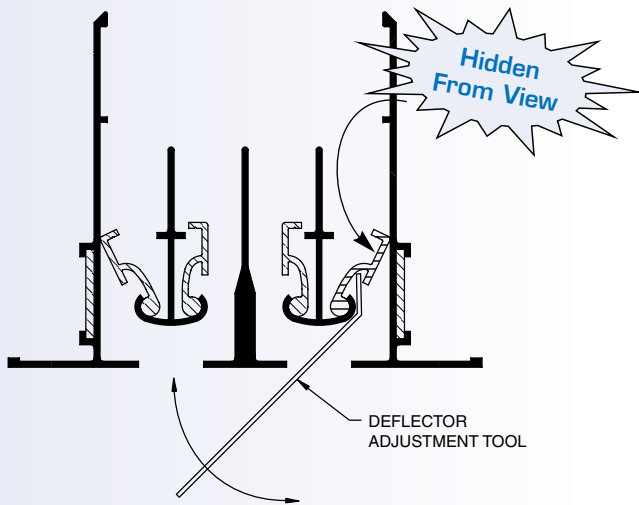
2 WAY OPPOSITE - HORIZONTAL



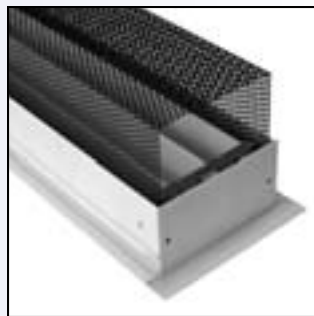
VERTICAL PROJECTION
(and other angles)

PATTERN & VOLUME ADJUSTMENT

A deflector adjustment tool is provided with each SLAD shipment. The adjustable vanes include an integral slot to allow the tool to engage the vane, and by rotating the tool as shown, position the vane as required for the pattern and air volume required for the application.



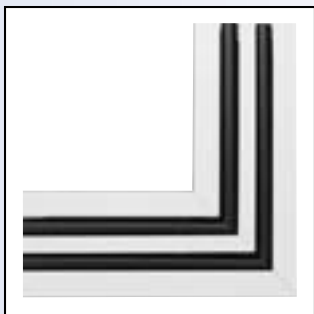
ACCESSORIES



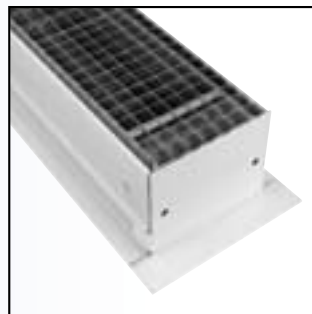
LLS - Light Shield



LBO - Blank-off Plate



Mitered Corners



LEC - Eggcrate Straightener

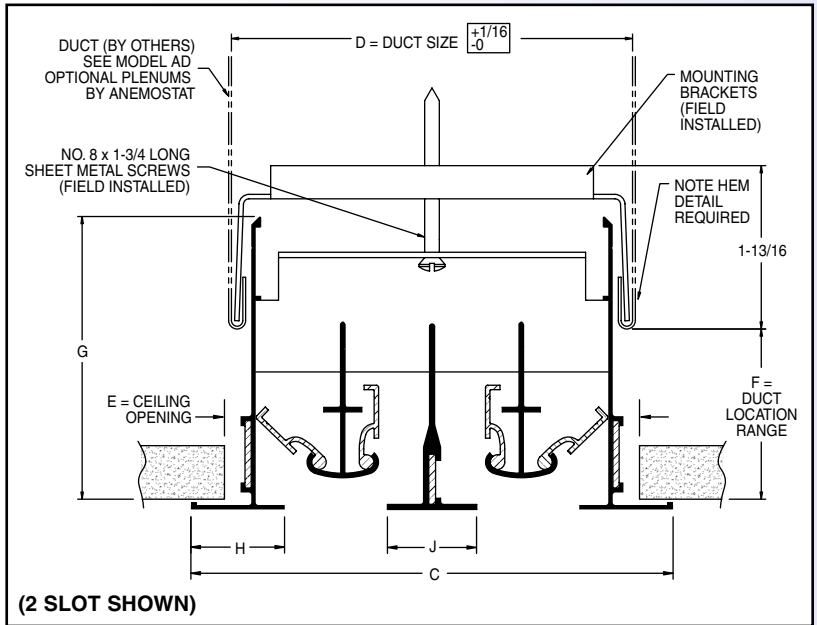
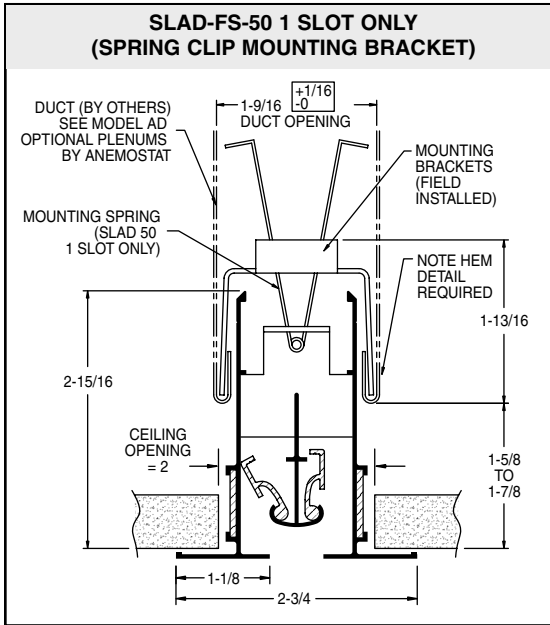


LED - Equalizing Deflector



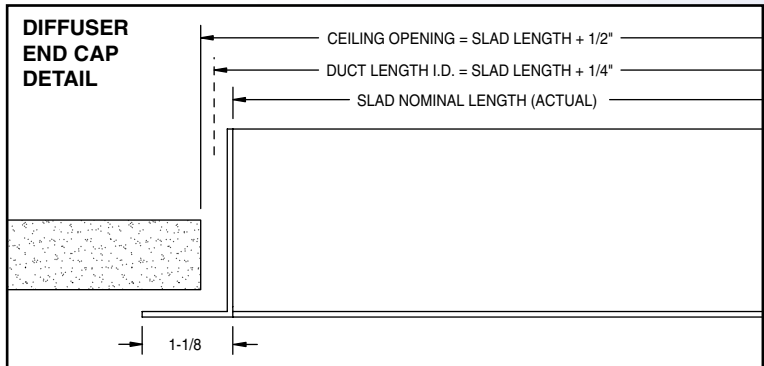
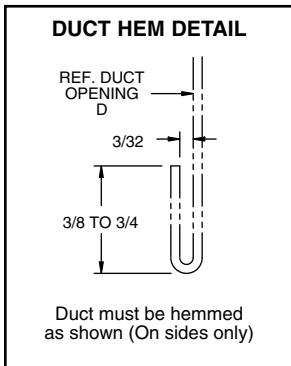
SURFACE/FLUSH MOUNTING • WIDE BORDER

- SLAD-FS-50 (1/2" Slot Width)
- SLAD-FS-75 (3/4" Slot Width)
- SLAD-FS-100 (1" Slot Width)
- SLAD-FS-150 (1-1/2" Slot Width)



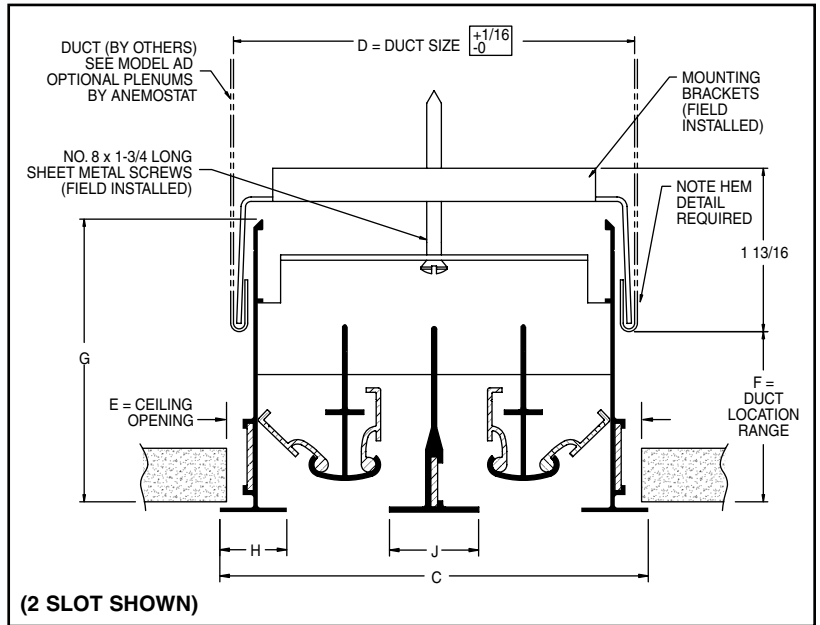
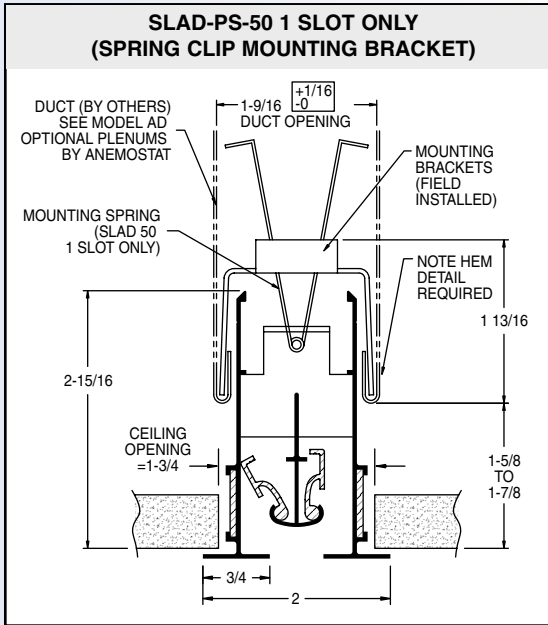
Diffuser Size	SLAD-FS-50 1/2" Slot Width							SLAD-FS-75 3/4" Slot Width						
	C	D	E	F	G	H	J	C	D	E	F	G	H	J
1	-	-	-	-	-	-	-	3	1-13/16	2-1/4				
2	4	2-13/16	3-1/4					4-1/2	3-5/16	3-3/4				
3	5-1/4	4-1/16	4-1/2					6	4-13/16	5-1/4				
4	6-1/2	5-5/16	5-3/4	1-5/8				7-1/2	6-5/16	6-3/4	1-5/8			
5	7-3/4	6-9/16	7	to	2-15/16	1-1/8	3/4	9	7-13/16	8-1/4	to	2-15/16	1-1/8	3/4
6	9	7-13/16	8-1/4	2-3/8				10-1/2	9-5/16	9-3/4	2-3/8			
7	10-1/4	9-1/16	9-1/2					12	10-13/16	11-1/4				
8	11-1/2	10-5/16	10-3/4					13-1/2	12-5/16	12-3/4				

Diffuser Size	SLAD-FS-100 1" Slot Width							SLAD-FS-150 1-1/2" Slot Width						
	C	D	E	F	G	H	J	C	D	E	F	G	H	J
1	3-1/2	2-5/16	2-1/2					5-1/8	3-5/16	3-3/4				
2	5-1/2	4-5/16	4-1/2					8-1/8	6-5/16	6-3/4				
3	7-1/2	6-5/16	6-1/2					11-1/8	9-5/16	9-3/4				
4	9-1/2	8-5/16	8-1/2	2				14-1/8	12-5/16	12-3/4	2-7/8			
5	11-1/2	10-5/16	10-1/2	to	3-9/32	1-1/4	1	17-1/8	15-5/16	15-3/4	to	4-5/32	1-13/16	1-1/2
6	13-1/2	12-5/16	12-1/2	2-3/4				20-1/8	18-5/16	18-3/4	3-5/8			
7	15-1/2	14-5/16	14-1/2					23-1/8	21-5/16	21-3/4				
8	17-1/2	16-5/16	16-1/2					26-1/8	24-5/16	24-3/4				



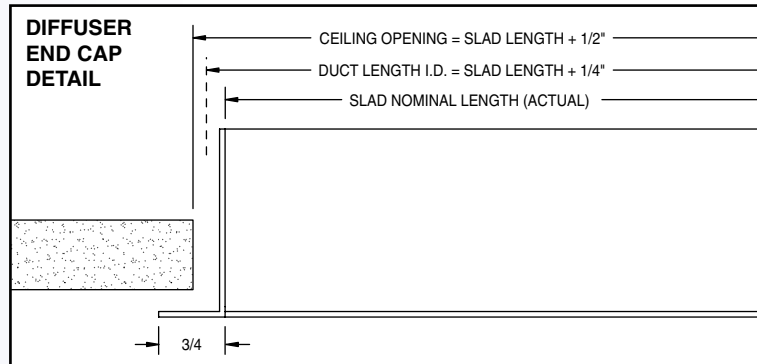
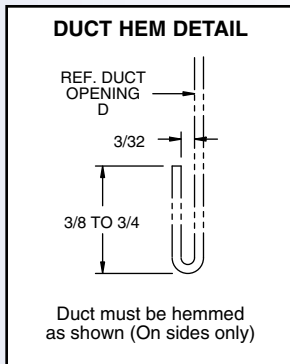
SURFACE/FLUSH MOUNTING • NARROW BORDER

- SLAD-PS-50 (1/2" Slot Width)
- SLAD-PS-75 (3/4" Slot Width)
- SLAD-PS-100 (1" Slot Width)
- SLAD-PS-150 (1-1/2" Slot Width)



Diffuser Size	SLAD-PS-50 1/2" Slot Width								SLAD-PS-75 3/4" Slot Width							
	C	D	E	F	G	H	J		C	D	E	J	F	G	H	
1	-	-	-	-	-	-	-	-	2-1/4	1-13/16	2	-	-	-	-	
2	3-1/4	2-13/16	3	-	-	-	-	-	3-3/4	3-5/16	3-1/2	-	-	-	-	
3	4-1/2	4-1/16	4-1/4	-	-	-	-	-	5-1/4	4-13/16	5	-	-	-	-	
4	5-3/4	5-5/16	5-1/2	1-5/8	-	-	-	-	6-3/4	6-5/16	6-1/2	-	-	-	-	
5	7	6-9/16	6-3/4	to	3	3/4	3/4	-	8-1/4	7-13/16	8	3/4	to	3	3/4	
6	8-1/4	7-13/16	8	2-3/8	-	-	-	-	9-3/4	9-5/16	9-1/2	-	-	-	-	
7	9-1/2	9-1/16	9-1/4	-	-	-	-	-	11-1/4	10-13/16	11	-	-	-	-	
8	10-3/4	10-5/16	10-1/2	-	-	-	-	-	12-3/4	12-5/16	12-1/2	-	-	-	-	

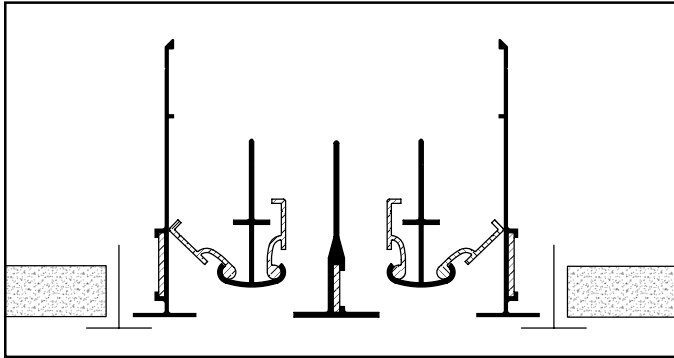
Diffuser Size	SLAD-PS-100 1" Slot Width								SLAD-PS-150 1-1/2" Slot Width							
	C	D	E	J	F	G	H		C	D	E	J	F	G	H	
1	3	2-5/16	2-1/2	-	-	-	-	-	4-1/2	3-15/16	4	-	-	-	-	
2	5	4-5/16	4-1/2	-	-	-	-	-	7-1/2	6-5/16	7	-	-	-	-	
3	7	6-5/16	6-1/2	-	-	-	-	-	10-1/2	9-5/16	10	-	-	-	-	
4	9	8-5/16	8-1/2	-	-	-	-	-	13-1/2	12-5/16	13	-	-	-	-	
5	11	10-5/16	10-1/2	1	2	3-9/32	1	-	16-1/2	15-5/16	16	1-1/2	2-7/8	4-5/32	1-1/2	
6	13	12-5/16	12-1/2	-	2-3/4	-	-	-	19-1/2	18-5/16	19	-	3-5/8	-	-	
7	15	14-5/16	14-1/2	-	-	-	-	-	22-1/2	21-5/16	22	-	-	-	-	
8	17	16-5/16	16-1/2	-	-	-	-	-	25-1/2	24-5/16	25	-	-	-	-	



15/16" LAY-IN T-BAR GRID SYSTEM

NARROW BORDER

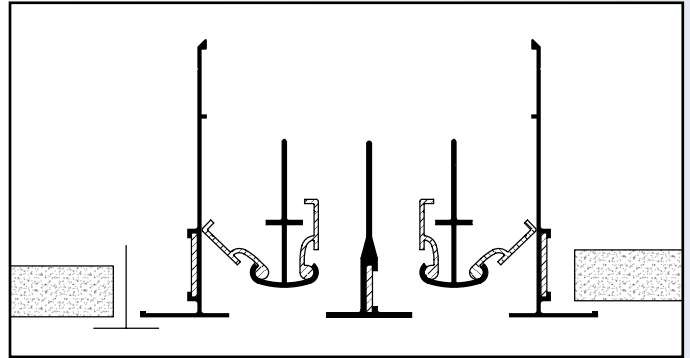
- SLAD-PL-50 (1/2" Slot Width)
- SLAD-PL-75 (3/4" Slot Width)
- SLAD-PL-100 (1" Slot Width)
- SLAD-PL-150 (1-1/2" Slot Width)



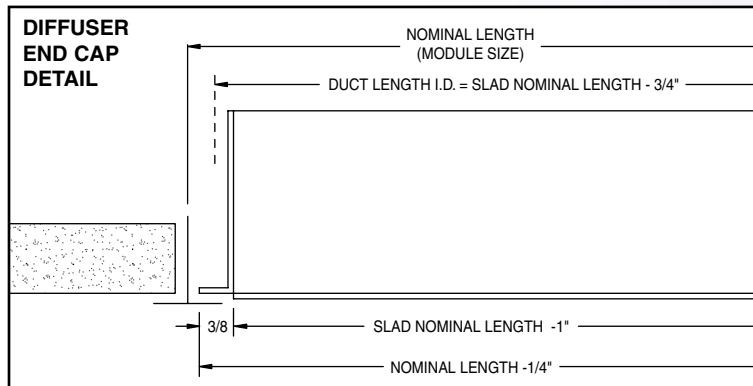
- Narrow border supply diffuser for lay-in T-Bar systems
- Typically installed in parallel inverted Tee members
- Matching return Model SLAR-PL

WIDE BORDER

- SLAD-FL-50 (1/2" Slot Width)
- SLAD-FL-75 (3/4" Slot Width)
- SLAD-FL-100 (1" Slot Width)
- SLAD-FL-150 (1-1/2" Slot Width)

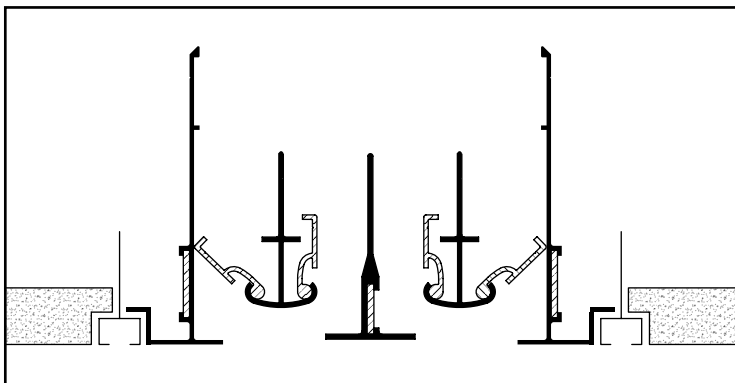


- Wide border supply diffuser for lay-in T-Bar systems
- Provides lip for lay-in tile or positioned on Tee member
- Matching return Model SLAR-FL

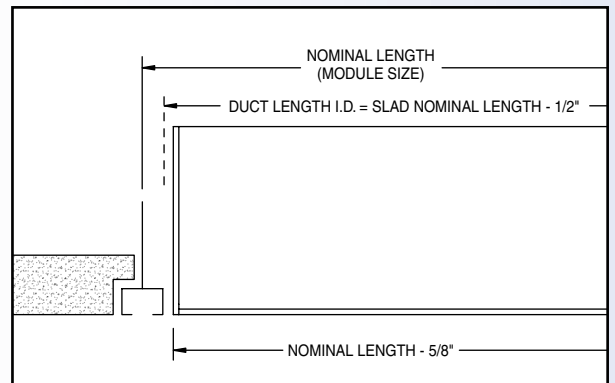


9/16" NARROW SLOT GRID SYSTEM

- SLAD-D-50 (1/2" Slot Width)
- SLAD-D-75 (3/4" Slot Width)
- SLAD-D-100 (1" Slot Width)
- SLAD-D-150 (1-1/2" Slot Width)

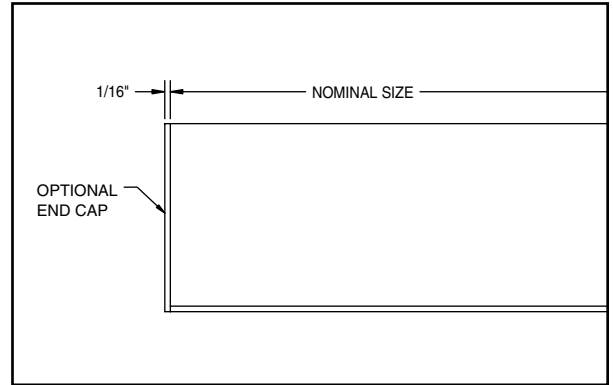
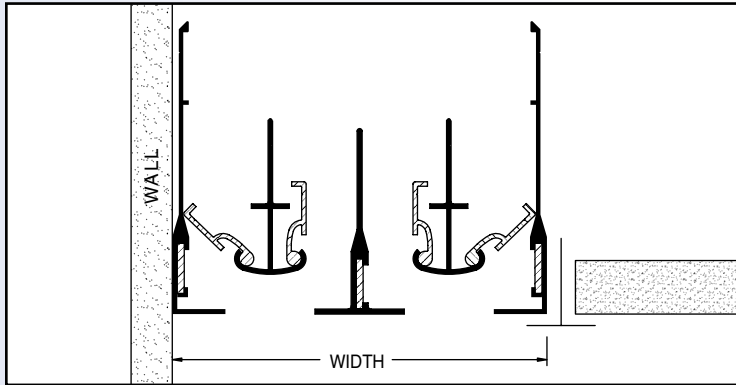


- Matching return Model SLAR-D



WALL / "BORDERLESS" APPLICATIONS

- SLAD-W-50 (1/2" Slot Width)
- SLAD-W-75 (3/4" Slot Width)
- SLAD-W-100 (1" Slot Width)
- SLAD-W-150 (1-1/2" Slot Width)

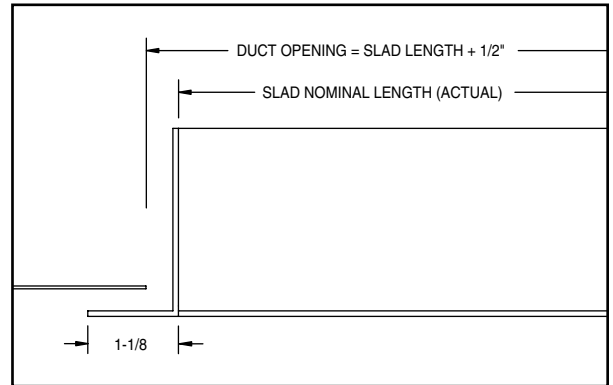
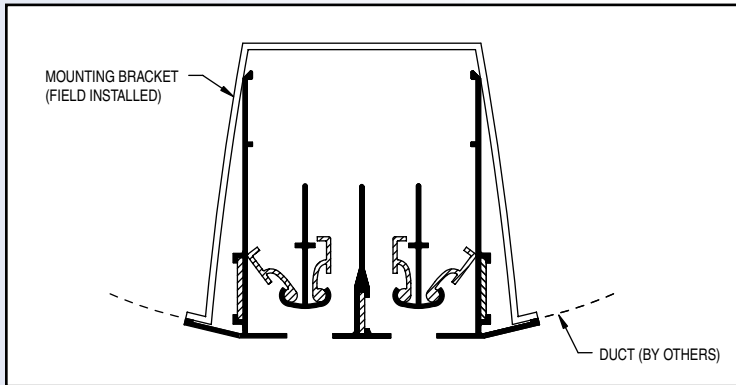


- Borderless frame installed flush to wall or other vertical surfaces
- Ideal for corner applications – transitioning to a lay-in T-bar grid system

WIDTH								
SLOT WIDTH	NUMBER OF SLOTS							
	1-SLOT	2-SLOT	3-SLOT	4-SLOT	5-SLOT	6-SLOT	7-SLOT	8-SLOT
1/2"	1-3/8	2-5/8	3-7/8	5-1/8	6-3/8	7-5/8	8-7/8	10-1/8
3/4"	1-5/8	3-1/8	4-5/8	6-1/8	7-5/8	9-1/8	10-5/8	12-1/8
1"	2-3/16	4-3/16	6-3/16	8-3/16	–	–	–	–
1-1/2"	3-3/16	6-3/16	9-3/16	12-3/16	–	–	–	–

DUCT MOUNTED APPLICATIONS

- SLAD-DM-50 (1/2" Slot Width)
- SLAD-DM-75 (3/4" Slot Width)
- SLAD-DM-100 (1" Slot Width)
- SLAD-DM-150 (1-1/2" Slot Width)

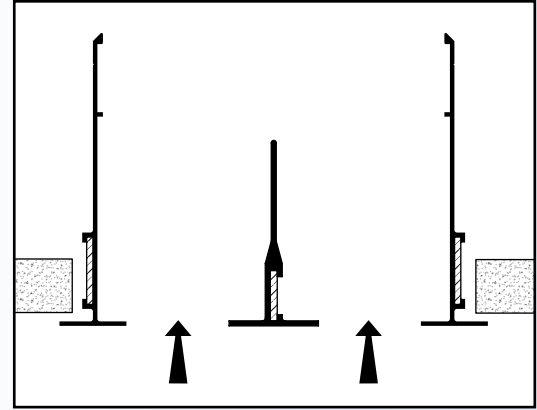


- Round / Oval / Spiral duct applications
- Mounting hardware included

MINIMUM DUCT DIAMETER				
MODEL	NUMBER OF SLOTS			
	1-SLOT	2-SLOT	3-SLOT	4-SLOT
SLAD-DM-50	5	7	9	12
SLAD-DM-75	5	8	12	14
SLAD-DM-100	7	12	16	20
SLAD-DM-150	10	16	22	28

- Matching returns for ALL supply model SLAD units:

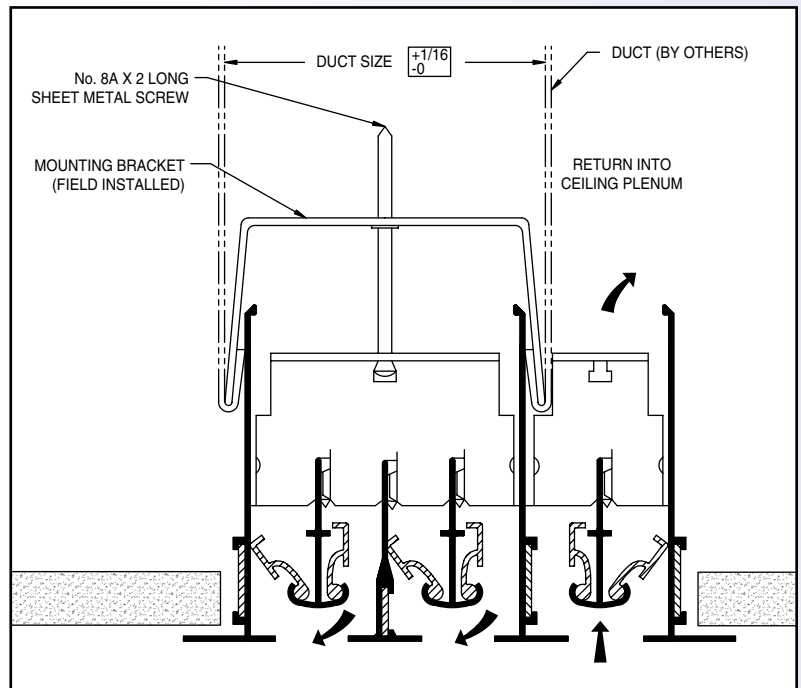
SLAR-FS	SLAR-D
SLAR-PS	SLAR-W
SLAR-PL	SLAR-DM
SLAR-FL	
- Low pressure drop and sound levels - ideal for both ducted and ceiling plenum return applications
- Alignment strips and mounting hardware is included as applicable



model SLAC

Combination Supply Diffuser & Return

- Supply slots and one plenum return slot constructed as one multi-slot assembly
- Available with any frame style – refer to nominal sizes and end cap detail for specific dimensions
- All slots include pattern/volume control vanes
- Supply and return slot openings maintain uniform appearance from the floor, regardless of pattern/volume settings
- Alignment strips and mounting hardware is included as applicable

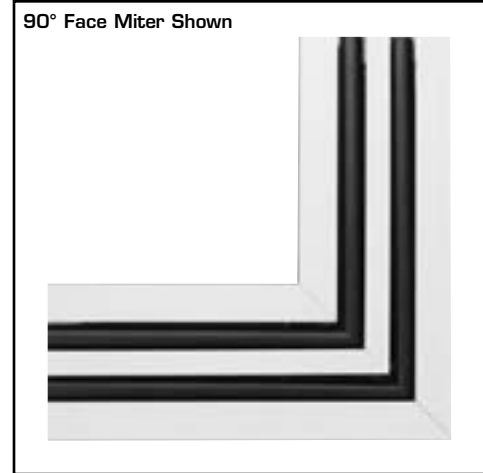


APPLICATION

- Diffuser component to provide change in direction for SLAD series linear diffusers and return units
- Ceilings and walls (flat surfaces) – face miter
- Wall-wall corners or wall-ceiling corners
- Inside corners (inside stack miter)
- Outside corners (outside stack miter)

PRODUCT FEATURES

- Welded corner with standard 45° or 90° face miter, or 90° stack miter
- Furnished with flat black anchors through the entire corner – the same EXACT appearance as the attached active SLAD linear diffusers
- Constructed from the same aluminum extrusions provided on SLAD diffusers and returns
- Available to match any SLAD mounting frame style, slot quantity, slot width
- Alignment strips and keyways for precise alignment with mating linear units
- Anemostat Arctic White outer frames and center tees



MITERED CORNER OPTIONS

- Blank-off plates (factory installed)
- Custom angles

