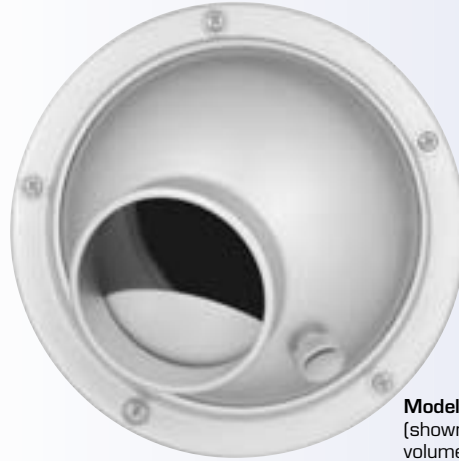


APPLICATION

- *Punkah* type spot diffuser provides architecturally preferred high end appearance
- Ideally suited for predictable directional control of conditioned air within large spaces such as malls, exhibit halls, sports arenas, industrial and manufacturing facilities, atrium areas, and large office building entrances.
- Small nozzle sizes provide shorter throws for smaller spaces
- Spot air distribution ideal for industrial heating, ventilating, or cooling
- Side wall, ceiling, or duct mounted applications – any orientation
- Rapid temperature equalization eliminates stratification



Model SPT-S
(shown with optional volume control damper)

PRODUCT FEATURES

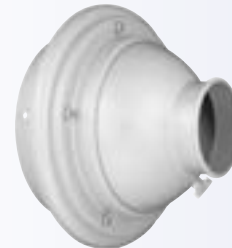
- Eyeball assembly smoothly rotates in fixed mounting flange – seals prevent leakage
- Field adjustable directional control up to 75° total angle
- 11 nozzle sizes from 3” to 20” diameter
- Installation configurations include surface and end of round duct mounting. A panel assembly of 2 or 4 nozzles permits multi-directional patterns from one location. Panels are satin polished stainless steel.
- Includes screw holes and factory supplied screws
- Robust aluminum construction is machined – not riveted, welded, or screwed together
- Clear anodize finish for years of corrosion-resistant performance

OPTIONS

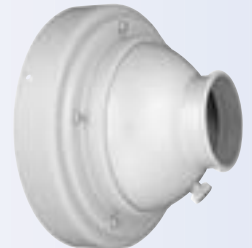
- Custom paint colors
- Volume control damper changes effective nozzle area while maintaining jet discharge velocity. Knurled adjustment knob means no tools required.



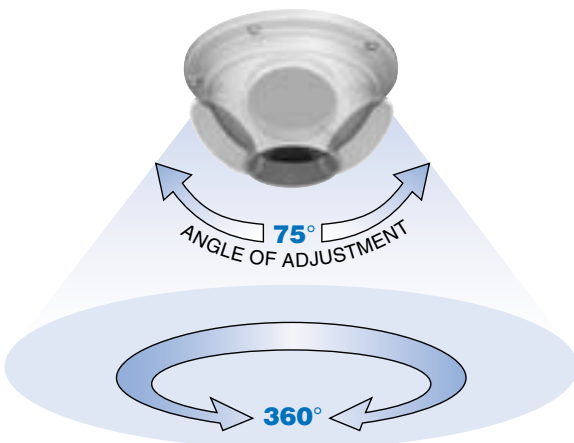
Model SPT-S
Surface Mounted
(shown with optional volume control damper)



Model SPT-SA
Surface Mounted with Round Duct Adapter
(shown with optional volume control damper)

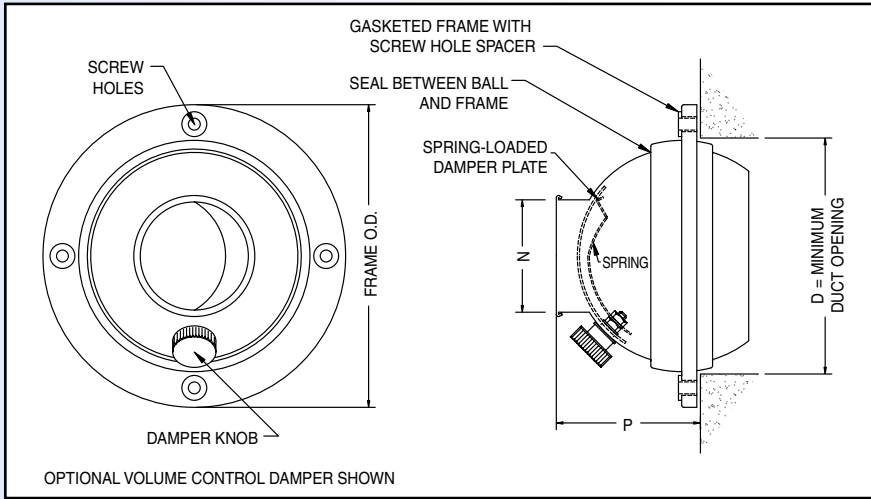


Model SPT-RE
Round Duct Exposed
(shown with optional volume control damper)



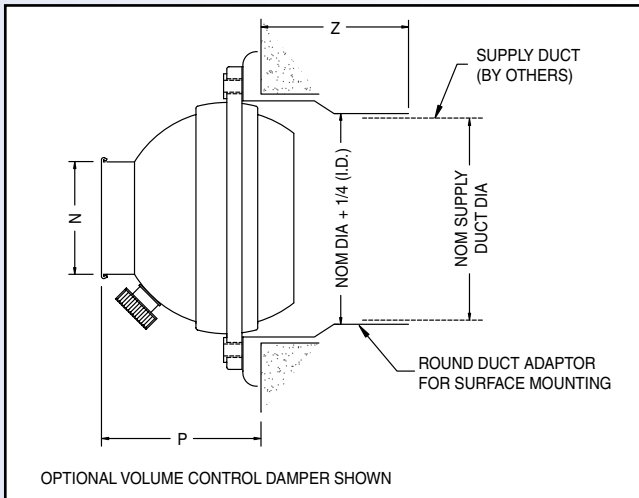
Model SPT-P2
Panel Mounted
(shown with optional volume control damper)

MODEL SPT-S • SURFACE MOUNTED



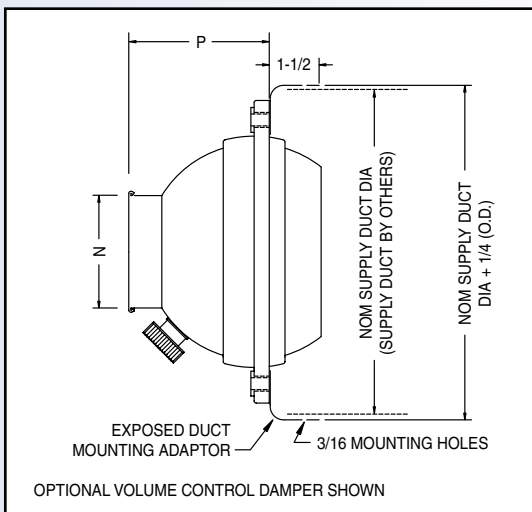
MODEL	MINIMUM DUCT SIZE	FRAME O.D.	P	N, Ø
SPT-S-3	3-3/8	4-9/16	2-1/8	1-1/2
SPT-S-4	4-3/8	5-1/2	2-9/16	2
SPT-S-5	5-1/2	6-11/16	3-1/4	2-9/16
SPT-S-6	6-5/16	7-1/2	3-11/16	2-15/16
SPT-S-7	7-1/2	9-1/8	4-3/8	3-9/16
SPT-S-8	8-3/16	9-7/8	4-3/4	3-15/16
SPT-S-10	11-1/16	12-3/4	6-7/8	5-1/2
SPT-S-12	12-9/16	14-5/16	7-7/8	6-1/2
SPT-S-16	16-3/4	18-1/2	9-3/4	9-1/16
SPT-S-18	19-1/8	21-1/16	11-5/8	10-1/4
SPT-S-20	19-1/8	21-1/16	11-5/8	12-1/4

MODEL SPT-SA • SURFACE MOUNTED WITH ROUND DUCT ADAPTER



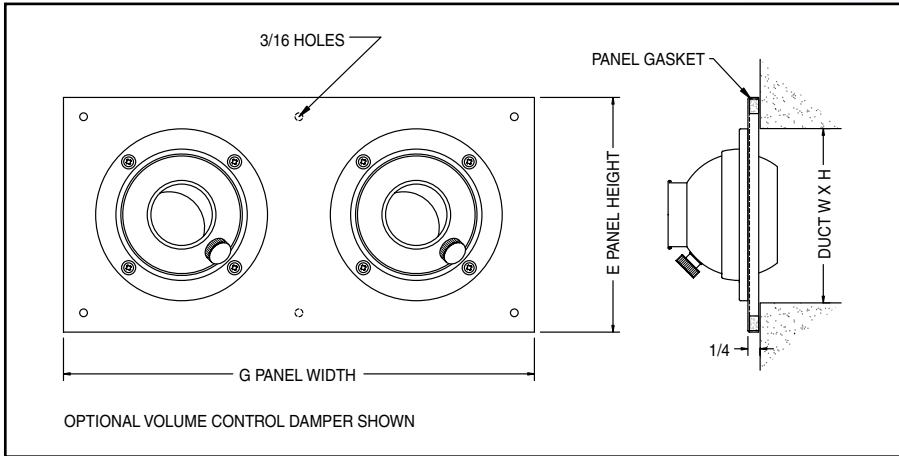
MODEL	SUPPLY DUCT Ø	Z	N, Ø	P
SPT-SA-6	6"	1-1/2	2-15/16	4-3/16
SPT-SA-7	7"	2	3-9/16	4-7/8
SPT-SA-8	8"	2	3-15/16	5-1/4
SPT-SA-10	10"	3-1/2	5-1/2	7-3/8
SPT-SA-12	12"	4	6-1/2	8-3/8
SPT-SA-16	16"	5	9-1/16	10-1/4
SPT-SA-18	20"	5	10-1/4	12-1/8
SPT-SA-20	20"	5	12-1/4	12-1/8

MODEL SPT-RE • ROUND DUCT EXPOSED



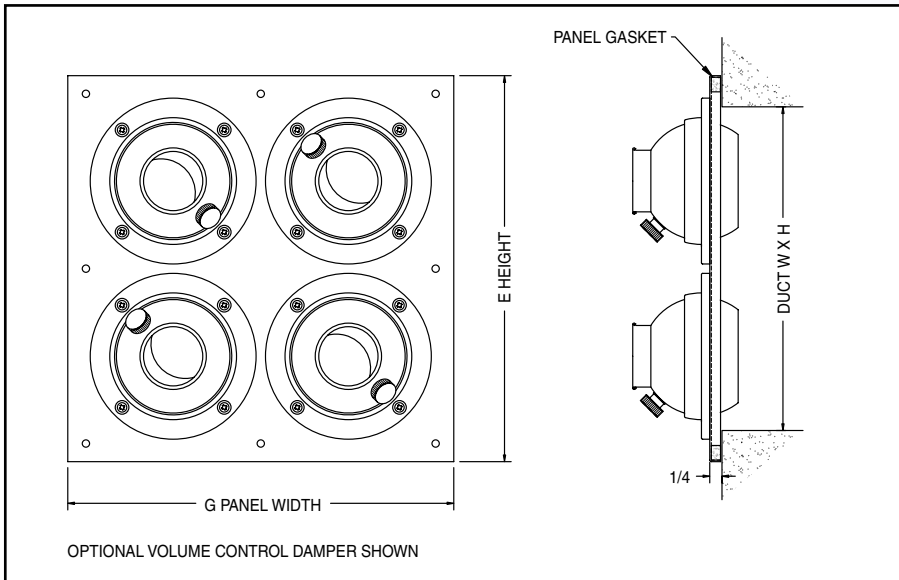
MODEL	NOM SUPPLY DUCT Ø	P	N, Ø
SPT-RE-6	8"	3-11/16	2-15/16
SPT-RE-7	10"	4-3/8	3-9/16
SPT-RE-8	11"	4-3/4	3-15/16
SPT-RE-10	14"	6-7/8	5-1/2
SPT-RE-12	16"	7-7/8	6-1/2
SPT-RE-16	20"	9-3/4	9-1/16
SPT-RE-18	24"	11-5/8	10-1/4
SPT-RE-20	24"	11-5/8	12-1/4

MODEL SPT-P2 • PANEL MOUNTED



MODEL	DUCT W X H	G	E
SPT-P2-3	10 x 4	12	6
SPT-P2-4	12 x 6	14	8
SPT-P2-5	14 x 6	16	8
SPT-P2-6	16 x 8	18	10
SPT-P2-7	18 x 9	20	11
SPT-P2-8	20 x 10	22	12

MODEL SPT-P4 • PANEL MOUNTED



MODEL	DUCT W X H	G	E
SPT-P4-3	10 x 10	12	12
SPT-P4-4	12 x 12	14	14
SPT-P4-5	14 x 14	16	16
SPT-P4-6	16 x 16	18	18
SPT-P4-7	18 x 18	20	20
SPT-P4-8	20 x 20	22	22