

# S-VENT<sup>®</sup> SUBMITTAL SHEET

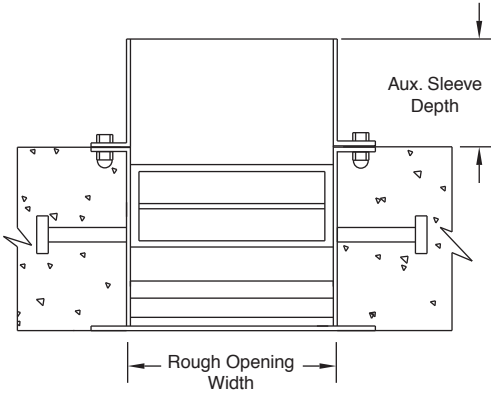


1220 WATSONCENTER ROAD • CARSON, CA 90745-4206  
(310) 835-7500 • FAX (310) 835-0448  
e-mail: airsec@anemostat.com • website: www.anemostat-hvac.com

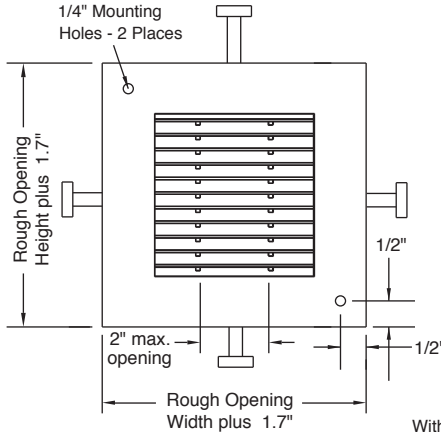
# SV6-\_\_-PC

SPECIFY TYPE  
**MAXIMUM SECURITY GRILLE**  
2" (max.) X 3/16" OPENING  
with  
ANCHOR STUDS FOR  
PRECAST CONCRETE

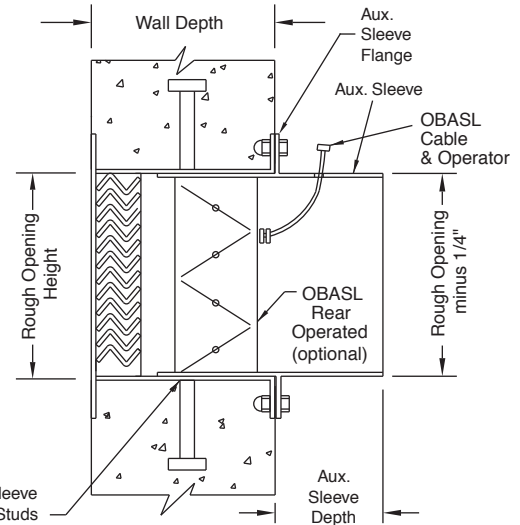
**TOP SECTION**



**FRONT SECTION**



**SIDE SECTION**



**IMPORTANT:** It is the specifier's responsibility to properly configure the HVAC system to meet the appropriate level of comfort, safety, security and detention

## PRODUCT FEATURES

**Face Flange**

14 GA (standard)

**Material Type**

Cold Rolled Steel (standard)

**Horizontal Louvers/Vertical Mullions**

14 GA with 1 7/16" Neck Depth (std)

**Finish**

White Powder Coat (std)

Other Powder Coat Colors \_\_\_\_\_

**Sleeve (standard)**

14 GA - specify length \_\_\_\_\_

**Auxiliary Sleeve with Flange (optional)**

14 GA - specify length \_\_\_\_\_

**Opposed Blade Damper (optional)**  
(shipped loose)

Rear Operated with ASL Cable

**Anchoring Studs (standard)**

Nelson Type - specify stud size \_\_\_\_\_

**MUST SPECIFY TYPE (BASED ON ROUGH OPENING SIZE) AS PART OF MODEL NUMBER WHEN PLACING ORDER**

ROUGH OPENING SIZES (WIDTH X HEIGHT)

Dimensions in Inches	WIDTH									
	6.3	8.3	10.3	12.3	14.3	16.3	18.3	20.3	22.3	
HEIGHT	6.3	A1□	B1□	C1□	D1□	E1□	F1□	G1□	H1□	J1□
	8.3	A2□	B2□	C2□	D2□	E2□	F2□	G2□	H2□	J2□
	10.3	A3□	B3□	C3□	D3□	E3□	F3□	G3□	H3□	J3□
	12.3	A4□	B4□	C4□	D4□	E4□	F4□	G4□	H4□	J4□
	14.3	A5□	B5□	C5□	D5□	E5□	F5□	G5□	H5□	J5□
	16.3	A6□	B6□	C6□	D6□	E6□	F6□	G6□	H6□	J6□
	18.3	A7□	B7□	C7□	D7□	E7□	F7□	G7□	H7□	J7□
	20.3	A8□	B8□	C8□	D8□	E8□	F8□	G8□	H8□	J8□
	22.3	A9	B9	C9	D9	E9	F9	G9	H9	J9

QTY	TYPE	ROUGH OPENING W" X H"		WALL DEPTH
27	C3	10.3	10.3	6"

**SUBMITTAL APPROVAL**

<b>Job Name and Location</b>			
<b>Engineer</b>	Date	<b>Factory</b>	Date
<b>Mfr. Rep.</b>	Date	<b>Submitted By</b>	Date

MARCH 2015  
NEW CONSTRUCTION  
S-VENT SECURITY PRODUCTS PAGE 9