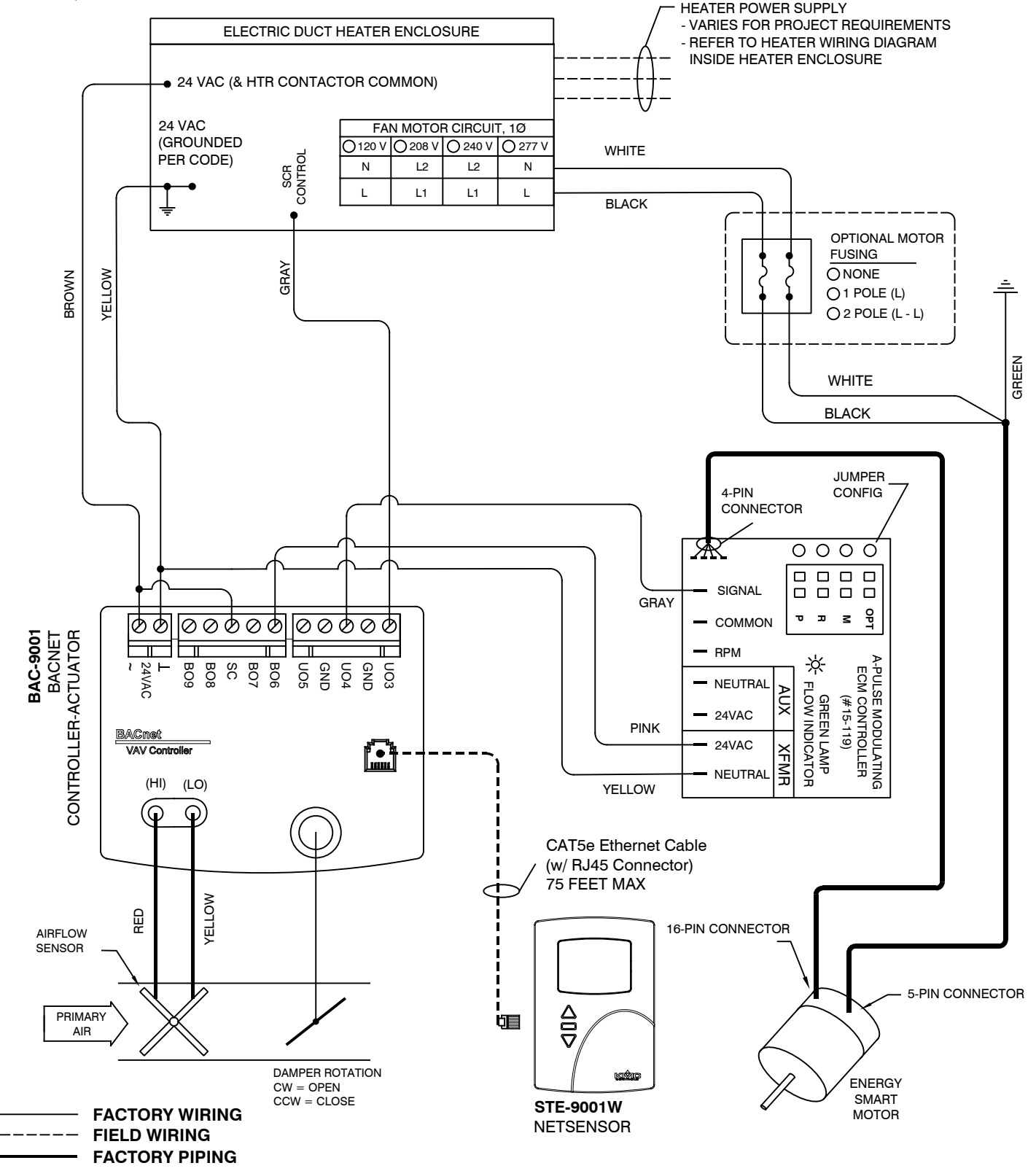


ANEMOSTAT[®]

SERIES FAN AIR TERMINAL

Control Package
EP - D - 9005A

- PARALLEL FAN AIR TERMINAL
- ENERGY SMART EC MOTOR
- ELECTRIC HEAT - PROPORTIONAL CONTROL SCR
- CONQUEST BACNET DDC
- HEATER AIR FLOW SWITCH



JOB NAME:
SUBMITTED BY:
DATE:

DWG #: EP-D-9005A
REV: -
DATE: 11-29-17