



# Anemostat®

SECURITY AIR DISTRIBUTION

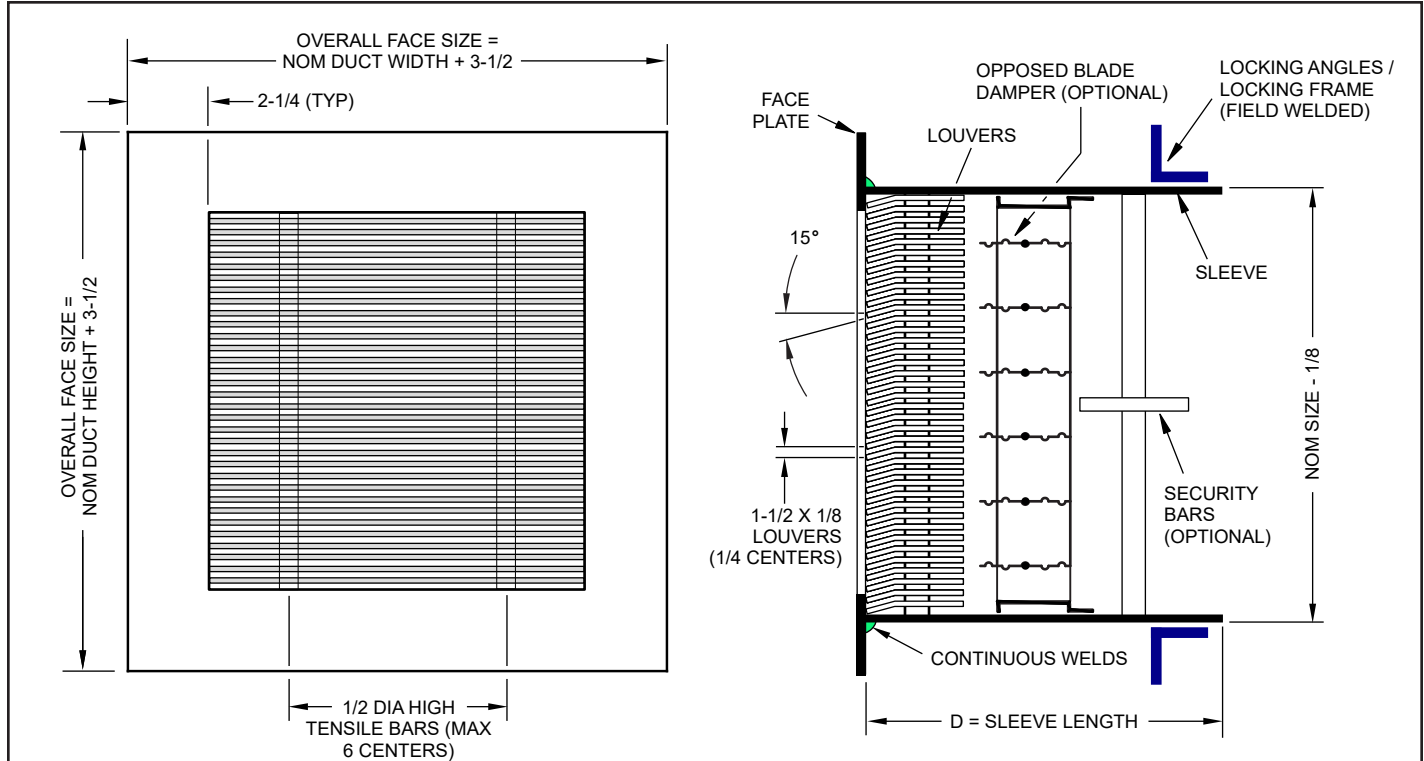
Model **ASLG**

## SUBMITTAL SHEET

www.anemostat-hvac.com

**HEAVY DUTY SECURITY GRILLE**

**LOUVERED • 15° DEFLECTION**



**IMPORTANT:** It is the specifier's responsibility to properly configure the HVAC system to meet the appropriate level of comfort, safety, security and detention

### PRODUCT FEATURES

#### Face Plate Thickness

- ☐ 3/16" GA. (STANDARD)  
☐ 10 GA. ☐ 12 GA.  
☐ Other \_\_\_\_\_

#### Sleeve Thickness

- ☐ 12 GA. (STD) ☐ 10 GA. ☐ 3/16"  
☐ Other \_\_\_\_\_

#### Material

- ☐ Plain Steel (STANDARD) ☐ Aluminum\*  
☐ 304 Stn Stl\* ☐ 316 Stn Stl\* ☐ Galvanized\*  
☐ Other \_\_\_\_\_

\*(Consult factory for availability)

#### Finish

- ☐ White Powder Coat (STANDARD)  
☐ Rust-Inhibiting Primer  
☐ Other \_\_\_\_\_

#### Locking Angle (2 Pieces)

- ☐ 1" x 1" x 3/16" (STANDARD)  
☐ 1-1/2" x 1-1/2" x 3/16"  
☐ 2" x 2" x 3/16"  
☐ Other \_\_\_\_\_

#### Locking Frame

- ☐ 1" x 1" x 3/16" (Optional)  
☐ Other \_\_\_\_\_

### OPTIONAL ACCESSORIES

- ☐ Security Bars in Sleeve (see detail sheet)  
☐ Anchoring Studs - Nelson Type (see detail sheet)  
☐ Model OB-1 Opposed Blade Damper - Rear Operated  
☐ Model SRA Square to Round Duct (ships loose)  
☐ Other Options (please specify)  
\_\_\_\_\_  
\_\_\_\_\_  
\_\_\_\_\_

All dimensions are in inches.

Q T Y	Order Size (NOM DUCT SIZE)		
	W	H	D

All dimensions are in inches.

**JOB NAME:**

**SUBMITTED BY:**