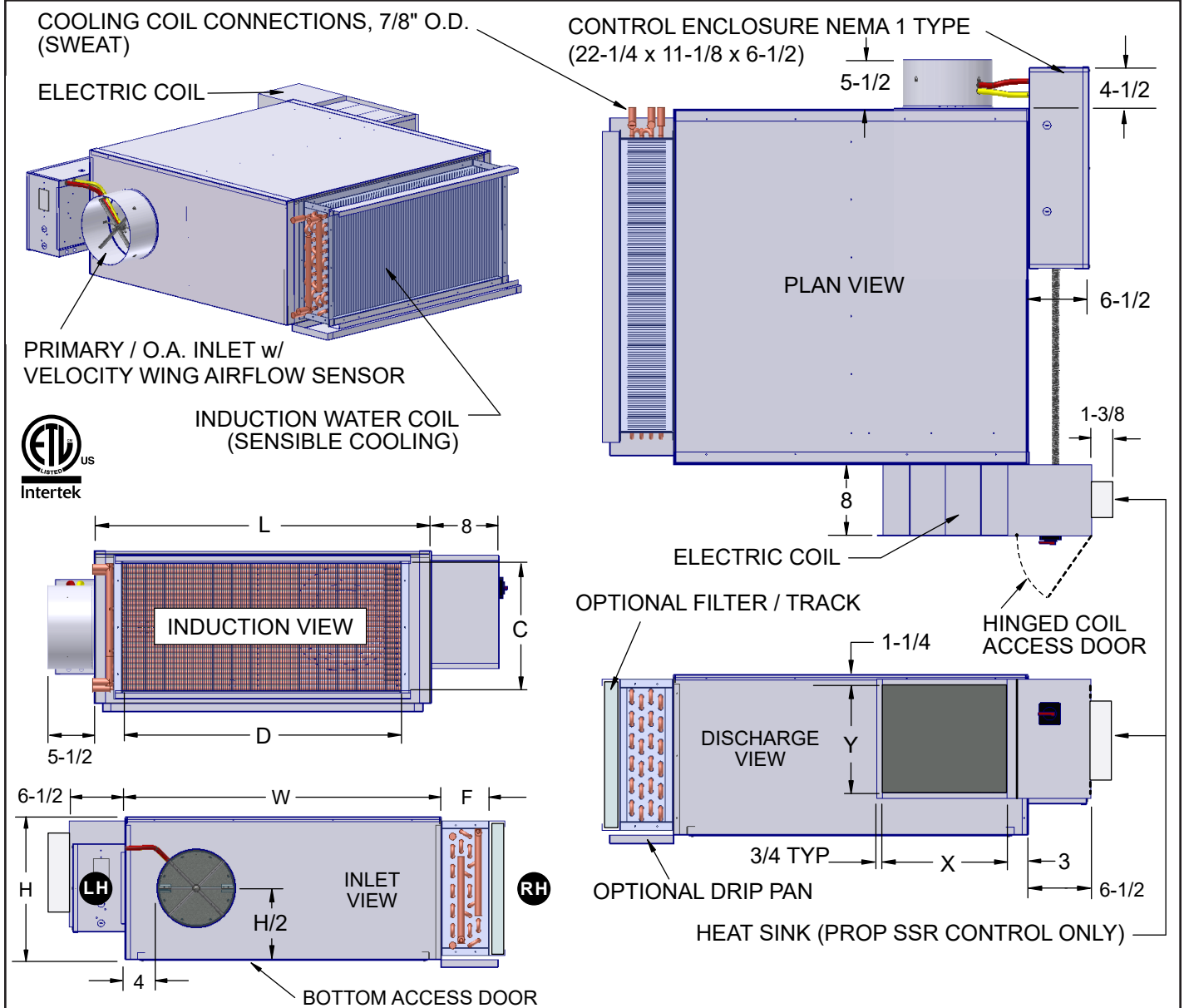


SUBMITTAL SHEET

www.anemostat-hvac.com



- LEFT HAND (LH) CONTROLS SHOWN
- COOLING COIL 2-PIPE IS STANDARD

Unit Size	Motor H.P.	Outside Air Inlet Dia	Height H	Width W	Length L	Discharge Duct		Induction Coil (Sensible Cooling)							
						X	Y	Induction		2 Row		4 Row		6 Row	
								C	D	F	Weight, lbs	F	Weight, lbs	F	Weight, lbs
17	1/6	5, 6, 7, 8, 9, 10	18	32	36	11-1/2	11	15	31	4	171	6	192	8	212
33	1/3	5, 6, 7, 8, 9, 10	18	32	36	11-1/2	11	15	31	4	175	6	196	8	216
50	1/2	5, 6, 7, 8, 9, 10, 12, 14	18	40	40	14	12	15	35	4	194	6	218	8	235
75	3/4	5, 6, 7, 8, 9, 10, 12, 14	20	48	48	19	16	17-1/2	43	4	259	6	292	8	324
10	1	5, 6, 7, 8, 9, 10, 12, 14, 16	20	48	48	19	16	17-1/2	43	4	266	6	299	8	331

Weights are estimated totals and include coil fluid weight. Weights will vary with options & controls installed. All dimensions are in inches.

JOB NAME: _____ **SUBMITTED BY:** _____

SUBMITTAL SHEET

www.anemostat-hvac.com

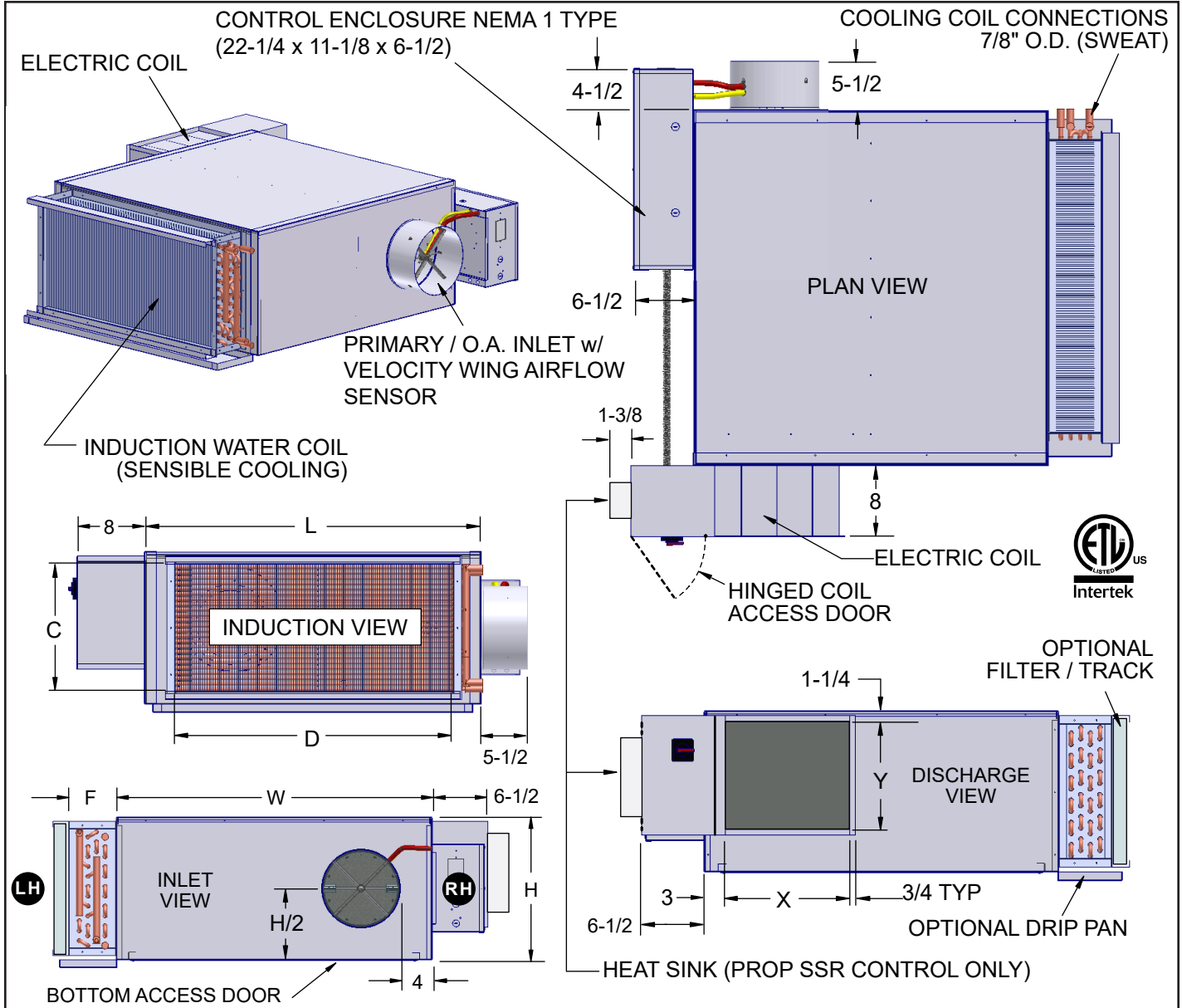
**Energy Smart Fan Terminal
with Sensible Cooling Coil for
Dedicated Outdoor Air Systems (DOAS)
Electric Coil @ Discharge**

STANDARD FEATURES & OPTIONS	
<u>Construction</u>	
<ul style="list-style-type: none"> •ETL listed assembly •Discharge / outlet accepts flanged discharge duct connection •Casing / Cabinet is rigid 20 gauge zinc-coated steel •Integral sound attenuator •Swing-down blower access panel (6" vertical clearance for removal, 30" for 90 degree swing) •Steel control enclosure NEMA 1 type with removable cover, screw attached. Optional: <input type="checkbox"/> Hinged front cover •1" Dual-density fiberglass insulation (NFPA 90 A & UL 181). Optional: <input type="checkbox"/> 1" Foil Faced <input type="checkbox"/> 3/8" Closed Cell Foam <input type="checkbox"/> 1" Closed Cell Foam <input type="checkbox"/> Dual Wall (22 ga inner wall, 1/2" internal insulation) <input type="checkbox"/> Lo-Temp (1" fiberglass insulation) •90° Outside air damper with leak resistant perimeter seal limiting leakage to <1% of maximum rated flow @ 3" wg inlet static pressure •Multi-Point center averaging Velocity Wing cross air flow sensor for accuracy to ± 5% of design flow. Optional: <input type="checkbox"/> Flow taps / tees in H&L tubes •Terminal accepts a flanged discharge duct connection. Optional: <input type="checkbox"/> Slip & Drive discharge collar •Control enclosure location can be Left Hand (LH) (as shown) or Right Hand (RH) 	
<u>Electrical</u>	
<ul style="list-style-type: none"> •Single point electrical connection •High efficiency, energy saving EC motor: <input type="checkbox"/> 120vac,1Ø <input type="checkbox"/> 208 vac,1Ø <input type="checkbox"/> 240vac,1Ø <input type="checkbox"/> 277vac,1Ø <input type="checkbox"/> Motor Fusing •Solid state motor controller for stand-alone operation or BAS integration See Technical Bulletin TB-019 Rev B. 	
<u>Sensible Cooling Coil</u>	
<ul style="list-style-type: none"> •2-Pipe Sensible cooling (non-condensing) coil on induction port (2,4,6, or 8 rows). Optional: <input type="checkbox"/> 4-Pipe •AHRI 410 certified performance rated •Core consists of 1/2" OD copper tubes with min .016" wall thickness mechanically expanded in aluminum fins (minimum of 10 fins / inch) •Cooling coil consists of 7/8" OD male solder/sweat headers. •Prior to shipment, each coil is factory pressure tested for leaks with dry nitrogen to 500 psi •Working pressure up to 400 psi. Maximum temperature = 200° F •Actual header connection locations vary with size and circuitry. Vents & drains are field supplied and installed. 	
<u>Electric Heating Coil</u>	
<ul style="list-style-type: none"> •Nickel-Chrome resistance wire, automatic reset thermal cutout switch, airflow switch, manual secondary thermal cutout switch (load carrying) •24vac Class 2 transformer (inherently limiting). Includes +15va overhead to power primary flow controls (DDC). •Supply Power: <input type="checkbox"/> 120vac,1Ø <input type="checkbox"/> 208 vac,1Ø <input type="checkbox"/> 240vac,1Ø <input type="checkbox"/> 277vac,1Ø <input type="checkbox"/> 208vac,3Ø <input type="checkbox"/> 480vac,3Ø (4-wire WYE) •Heater Control: <input type="checkbox"/> Step Control (1,2,3 Steps) <input type="checkbox"/> Proportional Control <input type="checkbox"/> Door interlocking disconnect switch <input type="checkbox"/> Power fusing (fuses & fuse blocks) 	
<u>Control System</u>	
<ul style="list-style-type: none"> •Control system: <input type="checkbox"/> Field installed controls <input type="checkbox"/> Factory mounted and wired •Controls provided by: <input type="checkbox"/> Anemostat <input type="checkbox"/> Controls Contractor 	
<u>Optional Accessories</u>	
<ul style="list-style-type: none"> •Air filters (Throw-away type) & filter track: <input type="checkbox"/> 1" Thick <input type="checkbox"/> 2" Thick <input type="checkbox"/> <Merv 4 <input type="checkbox"/> Merv 8 <input type="checkbox"/> Merv 13 <input type="checkbox"/> Unit mounting brackets (4) - field installed <input type="checkbox"/> Slip & Drive (S&D) discharge Collar <input type="checkbox"/> Drip Pan - field installed <input type="checkbox"/> Fan relay, 24vac (fan stop-start) <input type="checkbox"/> Outside air damper actuator, 24vac electric, 3-wire tri-state 	
JOB NAME:	SUBMITTED BY:

SUBMITTAL SHEET

www.anemostat-hvac.com

with Sensible Cooling Coil for Dedicated Outdoor Air Systems (DOAS)
Electric Coil @ Discharge
RIGHT HAND CONTROLS



• COOLING COIL 2-PIPE IS STANDARD

Unit Size	Motor H.P.	Outside Air Inlet Dia	Height H	Width W	Length L	Discharge Duct		Induction Coil (Sensible Cooling)							
						X	Y	Induction		2 Row		4 Row		6 Row	
								C	D	F	Weight, lbs	F	Weight, lbs	F	Weight, lbs
17	1/6	5, 6, 7, 8, 9, 10	18	32	36	11-1/2	11	15	31	4	171	6	192	8	212
33	1/3	5, 6, 7, 8, 9, 10	18	32	36	11-1/2	11	15	31	4	175	6	196	8	216
50	1/2	5, 6, 7, 8, 9, 10, 12, 14	18	40	40	14	12	15	35	4	194	6	218	8	235
75	3/4	5, 6, 7, 8, 9, 10, 12, 14	20	48	48	19	16	17-1/2	43	4	259	6	292	8	324
10	1	5, 6, 7, 8, 9, 10, 12, 14, 16	20	48	48	19	16	17-1/2	43	4	266	6	299	8	331

Weights are estimated totals and include coil fluid weight. Weights will vary with options & controls installed. All dimensions are in inches.

JOB NAME: _____ **SUBMITTED BY:** _____



Model **ESTE**
Energy Smart Fan Terminal

SUBMITTAL SHEET

www.anemostat-hvac.com

with Sensible Cooling Coil for Dedicated Outdoor Air Systems (DOAS)
Electric Coil @ Discharge
RIGHT HAND CONTROLS

STANDARD FEATURES & OPTIONS	
<u>Construction</u>	
<ul style="list-style-type: none"> •ETL listed assembly •Discharge / outlet accepts flanged discharge duct connection •Casing / Cabinet is rigid 20 gauge zinc-coated steel •Integral sound attenuator •Swing-down blower access panel (6" vertical clearance for removal, 30" for 90 degree swing) •Steel control enclosure NEMA 1 type with removable cover, screw attached. Optional: <input type="checkbox"/> Hinged front cover •1" Dual-density fiberglass insulation (NFPA 90 A & UL 181). Optional: <input type="checkbox"/> 1" Foil Faced <input type="checkbox"/> 3/8" Closed Cell Foam <input type="checkbox"/> 1" Closed Cell Foam <input type="checkbox"/> Dual Wall (22 ga inner wall, 1/2" internal insulation) <input type="checkbox"/> Lo-Temp (1" fiberglass insulation) •90° Outside air damper with leak resistant perimeter seal limiting leakage to <1% of maximum rated flow @ 3" wg inlet static pressure •Multi-Point center averaging Velocity Wing cross air flow sensor for accuracy to ± 5% of design flow. Optional: <input type="checkbox"/> Flow taps / tees in H&L tubes •Terminal accepts a flanged discharge duct connection. Optional: <input type="checkbox"/> Slip & Drive discharge collar •Control enclosure location can be Right Hand (RH) (as shown) or Left Hand (LH) 	
<u>Electrical</u>	
<ul style="list-style-type: none"> •Single point electrical connection •High efficiency, energy saving EC motor: <input type="checkbox"/> 120vac,1Ø <input type="checkbox"/> 208 vac,1Ø <input type="checkbox"/> 240vac,1Ø <input type="checkbox"/> 277vac,1Ø <input type="checkbox"/> Motor Fusing •Solid state motor controller for stand-alone operation or BAS integration See Technical Bulletin TB-019 Rev B. 	
<u>Sensible Cooling Coil</u>	
<ul style="list-style-type: none"> •2-Pipe Sensible cooling (non-condensing) coil on induction port (2,4,6, or 8 rows). Optional: <input type="checkbox"/> 4-Pipe •AHRI 410 certified performance rated •Core consists of 1/2" OD copper tubes with min .016" wall thickness mechanically expanded in aluminum fins (minimum of 10 fins / inch) •Cooling coil consists of 7/8" OD male solder/sweat headers. •Prior to shipment, each coil is factory pressure tested for leaks with dry nitrogen to 500 psi •Working pressure up to 400 psi. Maximum temperature = 200° F •Actual header connection locations vary with size and circuitry. Vents & drains are field supplied and installed. 	
<u>Electric Heating Coil</u>	
<ul style="list-style-type: none"> •Nickel-Chrome resistance wire, automatic reset thermal cutout switch, airflow switch, manual secondary thermal cutout switch (load carrying) •24vac Class 2 transformer (inherently limiting). Includes +15va overhead to power primary flow controls (DDC). •Supply Power: <input type="checkbox"/> 120vac,1Ø <input type="checkbox"/> 208 vac,1Ø <input type="checkbox"/> 240vac,1Ø <input type="checkbox"/> 277vac,1Ø <input type="checkbox"/> 208vac,3Ø <input type="checkbox"/> 480vac,3Ø (4-wire WYE) •Heater Control: <input type="checkbox"/> Step Control (1,2,3 Steps) <input type="checkbox"/> Proportional Control <input type="checkbox"/> Door interlocking disconnect switch <input type="checkbox"/> Power fusing (fuses & fuse blocks) 	
<u>Control System</u>	
<ul style="list-style-type: none"> •Control system: <input type="checkbox"/> Field installed controls <input type="checkbox"/> Factory mounted and wired •Controls provided by: <input type="checkbox"/> Anemostat <input type="checkbox"/> Controls Contractor 	
<u>Optional Accessories</u>	
<ul style="list-style-type: none"> •Air filters (Throw-away type) & filter track: <input type="checkbox"/> 1" Thick <input type="checkbox"/> 2" Thick <input type="checkbox"/> <Merv 4 <input type="checkbox"/> Merv 8 <input type="checkbox"/> Merv 13 <input type="checkbox"/> Unit mounting brackets (4) - field installed <input type="checkbox"/> Slip & Drive (S&D) discharge Collar <input type="checkbox"/> Drip Pan - field installed <input type="checkbox"/> Fan relay, 24vac (fan stop-start) <input type="checkbox"/> Outside air damper actuator, 24vac electric, 3-wire tri-state 	
JOB NAME:	SUBMITTED BY: