



# Anemostat® SUBMITTAL

1220 Watson Center Road • Carson, CA 90745-4206  
 (310) 835-7500 • FAX (310) 835-0448  
 air@anemostat.com • www.anemostat.com

## Model XEZTA SINGLE DUCT EXHAUST TERMINAL WITH INTEGRAL SOUND ATTENUATOR STANDARD

### AIR TERMINALS

#### PRODUCT FEATURES

• 22 gauge zinc-coated steel, low leakage casing construction sealed to limit leakage to <1% of max rated flow at 3" w.g. static pressure.

Optional:

- 20 gauge construction       Galvanized  
 304/316 Stainless Steel     Aluminum

• 1/2" dual density insulation (NFPA 90A, UL 181).

Optional:

- 1" dual density glass fiber insulation  
 1/2"     1" foil faced glass fiber insulation  
           – metal taped edges (ASTM C665)  
 1" Fibre-Lok insulating system – foil faced insulation  
           with steel encapsulated edges (ASTM C665)

- 3/8" fiber free closed cell foam insulation (NFPA255, UL181)  
 No insulation

• 90° inlet damper with leak resistant perimeter seal limiting leakage to <1% of max rated flow at 3" w.g. inlet static pressure.

• Multi-Point center averaging Velocity Wing air flow sensor for accuracy to ± 5% of design flow. Flow taps for air flow measurement provided with factory mounted controls.

• Slip & drive cleat inlet connection.

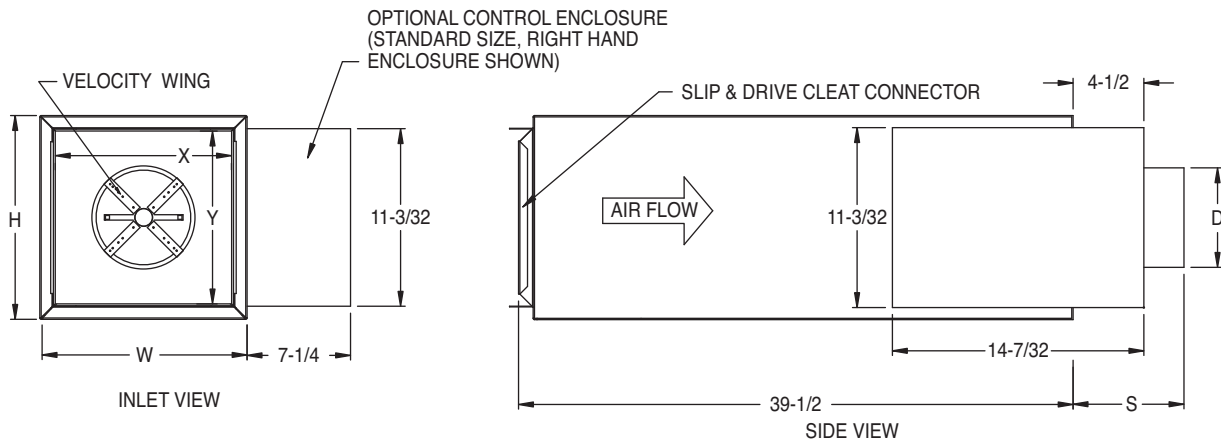
• Choice of right hand or left hand control position.

• Optional Accessories:

- 6 x 6 access plate     Bottom     Side  
 6 x 6 access door    Bottom    Side    Hinged    Double Camlock  
 Unit mounting brackets (field installed)  
 Std. Control enclosure    Screw attached cover    Hinged front cover  
 Large control enclosure    Screw attached cover

• Control System    Electronic Analog    Digital    Pneumatic    Electric  
 None – No controls

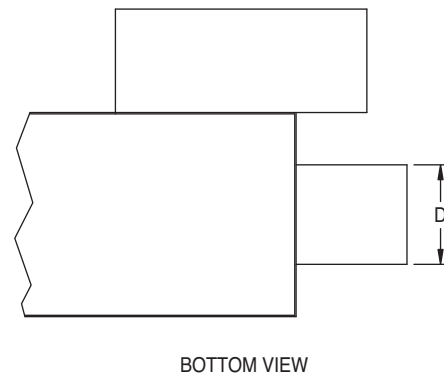
• Control Package \_\_\_\_\_     Field Installed Controls



SIZE	D	W	H	X	Y	S	WEIGHT
05	4 7/8	10	10	8 3/4	8 3/4	3	20 LBS
06	5 7/8	10	10	8 3/4	8 3/4	3	20 LBS
07	6 7/8	12	10	10 3/4	8 3/4	3	22 LBS
08	7 7/8	12	10	10 3/4	8 3/4	4	22 LBS
09	8 7/8	14	12 1/2	12 3/4	11 1/4	4	28 LBS
10	9 7/8	14	12 1/2	12 3/4	11 1/4	4	28 LBS
12	11 7/8	16	15	14 3/4	13 3/4	5 1/2	32 LBS
14	13 7/8	20	17 1/2	18 3/4	16 1/4	5 1/2	39 LBS
16	15 7/8	24	17 1/2	22 3/4	16 1/4	6 1/2	44 LBS
24 x 16	24x16	38	18	38	18	5 7/16	109 LBS

NOTES:

- WEIGHTS ARE AN ESTIMATION AND WILL VARY BASED ON SELECTED OPTIONS, INSULATION TYPE, ETC.
- 36" CLEARANCE REQUIRED BY NEC FOR ELECTRICAL ENCLOSURES.
- 24 X 16 NOT ILLUSTRATED.



All dimensions are in inches.

JOB NAME:

SUBMITTED BY: