

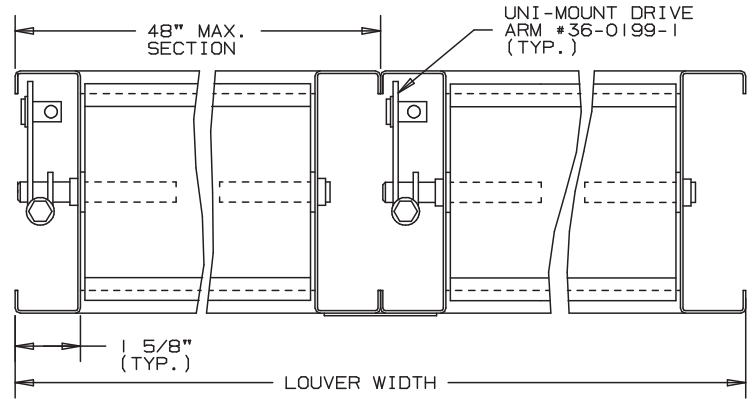
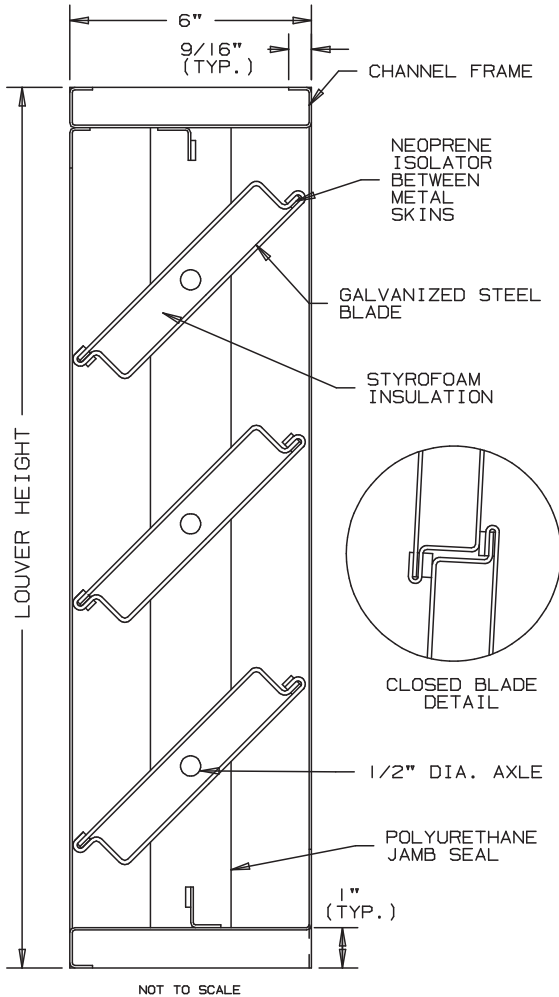


Anemostat®
AIR DISTRIBUTION

MODEL **LS100**

INSULATED
ADJUSTABLE LOUVER

PARALLEL BLADES ONLY



NOT TO SCALE

OPTIONAL

- A: FLANGED FRAMES.
- B: FRAMES AND BLADES OF OTHER GAUGES AND MATERIALS
- C: FINISHES: ENAMELS, EPOXIES, ETC.
- D: SEALS: STAINLESS STEEL FOR JAMBS ONLY.
- E: OTHER SCREENS.

SPECIFICATIONS

FRAME: 6" WIDE, 16 GA. GALVANIZED STEEL CHANNEL PROVIDES GREATER STRENGTH AND RIGIDITY.

BLADE: 18 GA. GALVANIZED STEEL "DOUBLE-THICKNESS" 1 1/8" THICK WITH STYROFOAM INSULATION SANDWICHED BETWEEN METAL SKINS, MECHANICALLY FASTENED TOGETHER. ON 6" C-C STANDARD SPACING.

AXLES: 1/2" DIAMETER CADMIUM PLATED STEEL STUB.

BEARINGS: OILITE BRONZE.

LINKAGE: CONCEALED IN CHANNEL, OUT OF AIRSTREAM.

SEALS: BLADE AND JAMB OF POLYURETHANE.

SCREENS: 1/2" MESH, 19 GA. GALV., .041" (WHEN INDICATED)

DRIVESHAFT: 1/2" DIAMETER CADMIUM PLATED STEEL, PERMANENTLY EXTENDED 6" BEYOND FRAME FOR EXTERNAL DRIVE. FOR INTERNAL DRIVE A BLADE CLIP WILL BE PROVIDED. PLEASE SPECIFY LOCATION OF DRIVE REQUIRED.

SIZES: MADE TO EXACT SIZE REQUIRED.
MAXIMUM PANEL SIZE: 48" x 72"
MINIMUM PANEL SIZE: 10" x 8 1/2"

FINISH: MILL.

INSULATING FACTORS FOR ABOVE CONSTRUCTION

R-VALUE = 4
U-FACTOR, .25 BTU PER HOUR PER SQUARE FOOT PER DEGREE° F

THE ABOVE VALUES ARE BASED ON CALCULATIONS CONSIDERING THE FACE AREA OF THE DAMPER ONLY. THIS DOES NOT INCLUDE FRAMES. INSULATION OF DAMPER FRAME SHALL BE BY OTHERS.

DAMPERS WILL BE FABRICATED 1/2" SMALLER THAN OPENING SIZE UNLESS OTHERWISE SPECIFIED.

											 UNION MADE
ITEM	QTY.	WIDTH	HEIGHT	WIDTH	HEIGHT	MULL					
		OPENING SIZE		DAMPER SIZE							

Anemostat Air Distribution
1220 E. Watson Center Road
Carson, CA 90745
310-835-7500 • air@anemostat.com
www.anemostat-hvac.com

AGENT: _____

ARCH./ENG.:	
CONTR.:	
PROJECT:	
EDR:	ECN: JOB:
DATE:	DWN.: DWG.: