



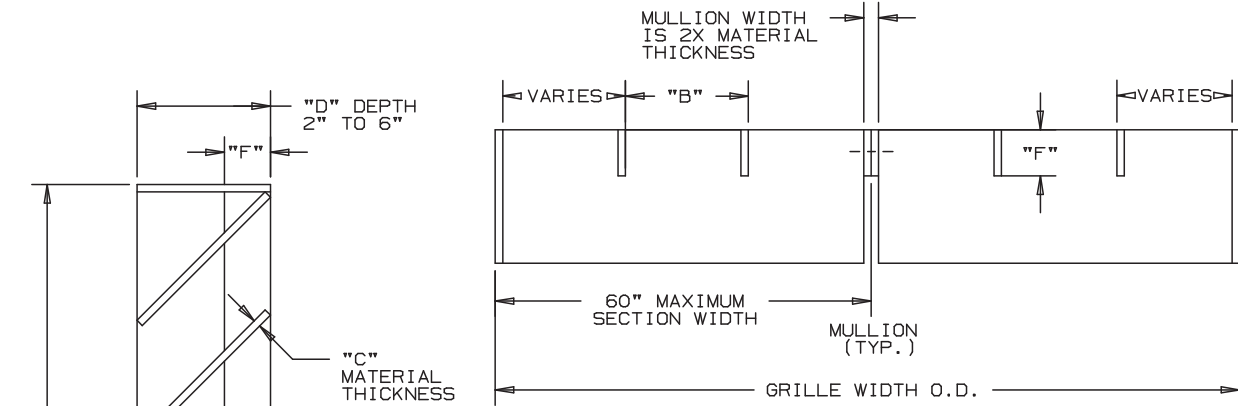
Anemostat[®]

AIR DISTRIBUTION

MODEL **SC2CL**

EXTRUDED ALUMINUM GRILLE SCREEN ANGULAR CONTINUOUS LINE

MODULAR GRILLE SCREEN - STATIONARY



OPTIONAL FRAMES



CHANNEL FRAME



ANGLE FRAME

SPECIFICATIONS

FRAME/BLADE: EXTRUDED ALUMINUM 6063-T6/T52 ALLOY, .125" TO .250" NOMINAL THICKNESS. BLADES CAN BE 2" TO 12" VERTICAL AND HORIZONTAL SPACING. HORIZONTAL BLADE ANGLE FROM 0° TO 45°. VERTICAL BLADE DEPTH CAN BE 1" MINIMUM. GRILLE DEPTH CAN BE 2" TO 6" DEEP. ALL WELDED CONSTRUCTION.

FINISH: FACTORY MILL.

MINIMUM SINGLE PANEL SIZE: 12" x 12"
 MAXIMUM SINGLE PANEL SIZE: 60" x 96" (40 SQ. FT.)

- "A" = 2" TO 12" (HORIZONTAL BLADE SPACING)
- "B" = 2" TO 12" (VERTICAL BLADE SPACING)
- "C" = .125" TO .250" (MATERIAL THICKNESS)
- "D" = 2" TO 6" (GRILLE DEPTH)
- "E" = 0° TO 45° (BLADE ANGLE)
- "F" = 1" MINIMUM (VERTICAL BLADE DEPTH)



NOMINAL DEDUCTIONS WILL BE MADE TO OPENING SIZES GIVEN.

ITEM	QTY.	WIDTH	HEIGHT	WIDTH	HEIGHT	MULL.	"A"	"B"	"C"	"D"	"E"	"F"
		OPENING SIZE		GRILLE SIZE (O.D.)								

Anemostat Air Distribution 1220 E. Watson Center Road Carson, CA 90745 310-835-7500 • air@anemostat.com www.anemostat-hvac.com AGENT : _____	ARCH./ENG. : CONTR. : PROJECT : EDR : ECN : JOB : DATE : DWN. : DWG. :
--------------------------------------------------------------------------------------------------------------------------------------------------------------------	------------------------------------------------------------------------------------------------------------------------------------------------------------------------