

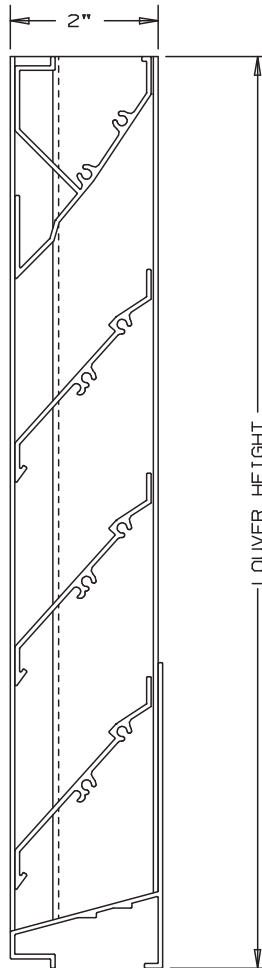


Anemostat®
AIR DISTRIBUTION

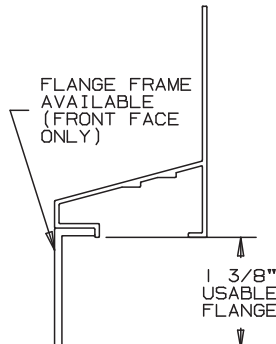
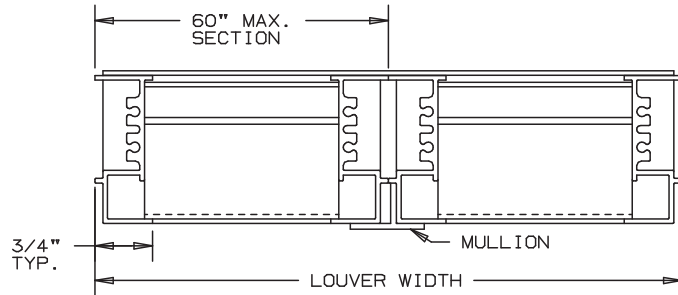
MODEL **SL20B**

EXTRUDED ALUMINUM LOUVERS
2" DEEP

CURTAIN WALL LOUVERS
45° BAFFLE BLADE-STATIONARY-MODIFIED FLANGE FRAME



NOT TO SCALE



FLANGE FRAME OPTION

SPECIFICATIONS

MATERIAL: EXTRUDED ALUMINUM 6063-T6/T52 ALLOY,
FRAME - .063" THK., BLADES - .063" THK.

FACE OF LOUVER: FULL SILL, WITH BLADES, AND HEAD
CONTAINED IN JAMBS. APPROXIMATE
BLADE CENTERS 2 3/4".

SCREEN: (WHEN INDICATED)
BIRD SCREEN - 1/2" FLATTENED ALUMINUM, .051" THK.
OR - 1/2" SQ. MESH INTERMEDIATE DOUBLE-
CRIMPED ALUMINUM WIRE, .063" DIA.
OR - 18/16 MESH, .011" DIA. ALUMINUM
WIRE INSECT SCREEN.

FINISH: _____

LOUVER PERFORMANCE STATEMENT

LOUVER MODEL SL20B SHALL BE FABRICATED TO PROVIDE
A MINIMUM OF (45%), 7.23 SQUARE FEET OF FREE AREA FOR
A 48" x 48" SIZE LOUVER AND BEAR THE AMCA CERTIFIED
RATINGS PROGRAM SEAL FOR AIR PERFORMANCE AND WATER
PENETRATION. THE RATING SHALL SHOW A BEGINNING
POINT OF WATER PENETRATION AT .01 OUNCES PER SQUARE
FOOT OF FREE AREA AT A FREE AREA VELOCITY OF 748
FEET PER MINUTE, (5408) CUBIC FEET PER MINUTE. WITH
.085 INCHES WATER GAUGE PRESSURE DROP FOR AIR INTAKE.

NOMINAL DEDUCTIONS WILL BE MADE TO OPENING SIZES GIVEN.

ITEM	QTY.	WIDTH	HEIGHT	WIDTH	HEIGHT	MULL	TYPE	LOC	SCREENS	
		OPENING SIZE		LOUVER SIZE						

Anemostat Air Distribution
1220 E. Watson Center Road
Carson, CA 90745
310-835-7500 • air@anemostat.com
www.anemostat-hvac.com

AGENT: _____

ARCH./ENG.:
CONTR.:
PROJECT:
EDR: ECN: JOB:
DATE: DWN.: DWG.:

MODEL SL20B

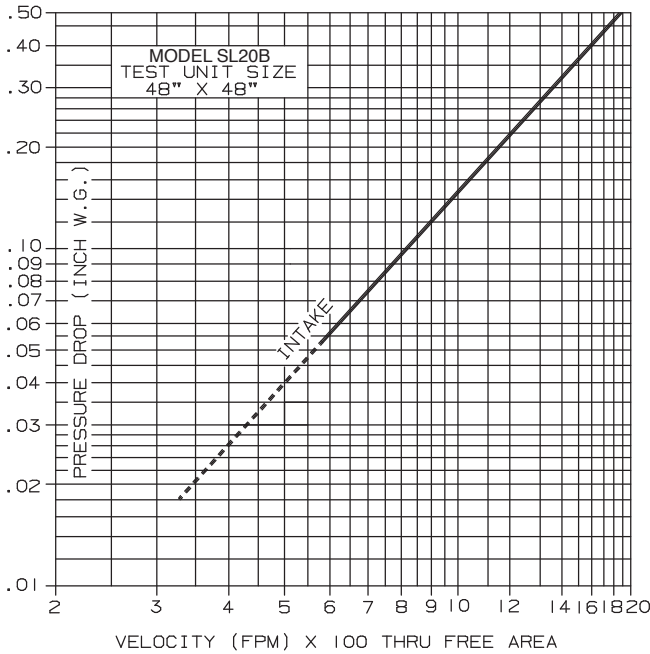
45° BAFFLE BLADE
EXTRUDED ALUMINUM - STATIONARY

PERFORMANCE DATA

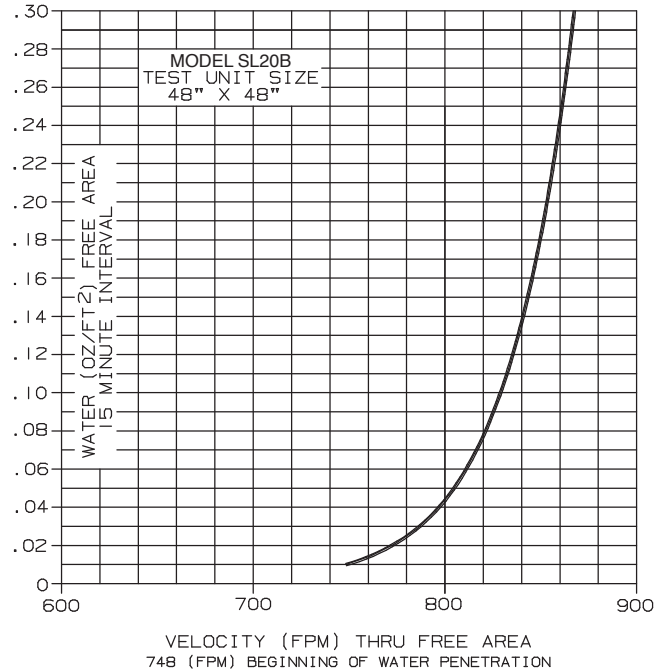
TESTS OF A 48" X 48" SAMPLE ACCORDING TO AMCA STANDARD 500-L SHOWS LESS THAN .02 OZ. PER SQ. FT. WATER PENETRATION AT 750 FPM (FREE AREA VELOCITY) WITH LESS THAN .09" W.G. PRESSURE DROP (INTAKE).

RATINGS DO NOT INCLUDE THE EFFECT OF BIRDSCREEN.

PRESSURE DROP



WATER PENETRATION



FREE AREA

HEIGHT	FREE AREA (SQ. FT.)								
	WIDTH								
	12"	18"	24"	30"	36"	42"	48"	54"	60"
12"	.28	.44	.60	.76	.92	1.08	1.24	1.40	1.56
24"	.78	1.23	1.69	2.14	2.59	3.04	3.49	3.94	4.39
36"	1.19	1.87	2.55	3.23	3.91	4.60	5.28	5.96	6.64
48"	1.63	2.56	3.50	4.43	5.37	6.30	7.23	8.17	9.11
60"	2.05	3.23	4.41	5.59	6.77	7.95	9.14	10.32	11.50
72"	2.45	3.86	5.27	6.68	8.09	9.50	10.91	12.32	13.73
84"	2.94	4.63	6.32	8.01	9.70	11.39	13.08	14.77	16.46
96"	3.36	5.29	7.22	9.15	11.08	13.00	14.93	16.86	18.79



WATER
PENETRATION



AIR
PERFORMANCE

Anemostat certifies that the performance data shown has been determined by test in accordance with applicable AMCA standards.