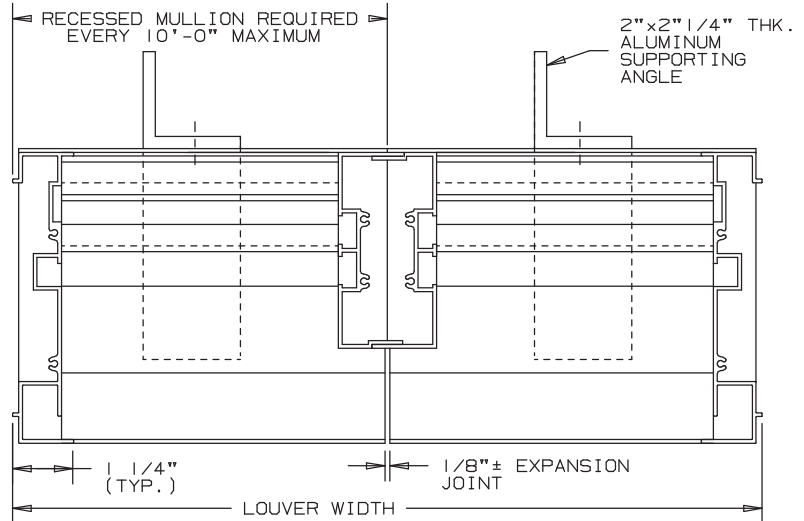
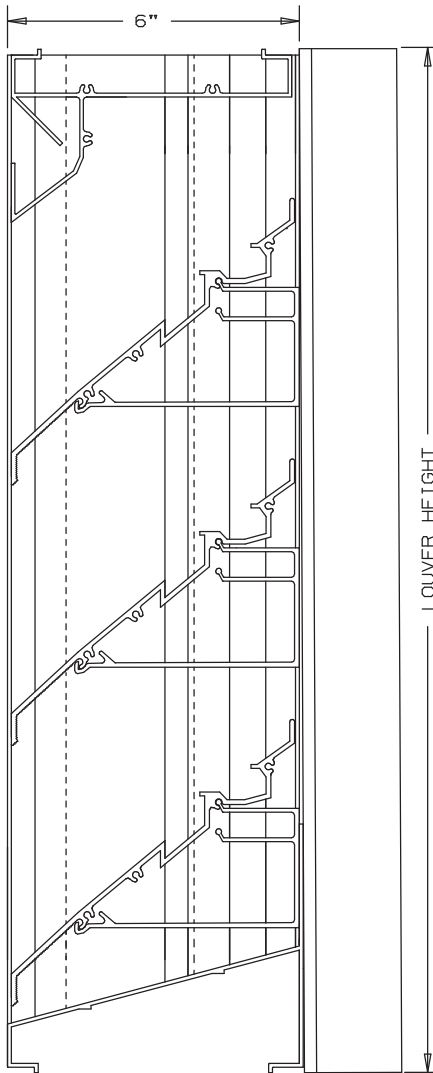




Anemostat®
AIR DISTRIBUTION

MODEL **SL640DR**
EXTRUDED ALUMINUM LOUVERS
6" DEEP - CONTINUOUS LINE
RECESSED MULLION STYLE

DRAIN BLADE-CONTINUOUS LINE-STATIONARY-CHANNEL TYPE



LOUVER HEIGHT

LOUVER WIDTH

SPECIFICATIONS

MATERIAL: EXTRUDED ALUMINUM 6063-T6/T52 ALLOY
FRAMES: .081" THK. (NOMINAL)
BLADES: .125" THK. (NOMINAL)
FACE OF LOUVER: FULL WIDTH SILL WITH THE HEAD AND BLADES CONTAINED WITHIN JAMBS. BLADE IS 45° ON APPROXIMATE 5 3/8" BLADE CENTERS.
SCREEN: (WHEN INDICATED, IN A REMOVABLE FRAME)
BIRD SCREEN - 1/2" FLATTENED ALUMINUM, .051" THK.
OR - 1/2" SQ. MESH INTERMEDIATE DOUBLE-CRIMPED ALUMINUM WIRE, .063" DIA.
OR - 18/16 MESH, .011" DIA. ALUMINUM WIRE INSECT SCREEN.

FINISH: _____
MINIMUM PANEL SIZE: 12" x 12"
MAXIMUM SINGLE PANEL SIZE: 120" x 60" OR 60" x 120"

LOUVER PERFORMANCE STATEMENT

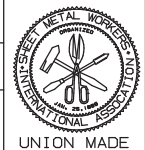
LOUVER MODEL SL640DR SHALL BE FABRICATED TO PROVIDE A MINIMUM OF (53%), 8.40 SQUARE FEET OF FREE AREA FOR A 48" x 48" SIZE LOUVER AND BEAR THE AMCA CERTIFIED RATINGS PROGRAM SEAL FOR AIR PERFORMANCE AND WATER PENETRATION. THE RATINGS SHALL SHOW A BEGINNING POINT OF WATER PENETRATION AT .01 OUNCES PER SQUARE FOOT OF FREE AREA TO BE 1,223 FPM, (10,273) CUBIC FEET PER MINUTE, WITH LESS THAN .10 INCHES WATER GAUGE PRESSURE DROP AT 800 FPM AIR INTAKE.

FLANGE FRAME (AVAILABLE) EITHER SIDE

1 3/8" USABLE FLANGE

FLANGE FRAME OPTION

NONINAL DEDUCTIONS WILL BE MADE TO THE OPENING SIZE GIVEN.



ITEM	QTY.	WIDTH	HEIGHT	WIDTH	HEIGHT	MULL	TYPE	LOC
		OPENING SIZE		LOUVER SIZE				

Anemostat Air Distribution
1220 E. Watson Center Road
Carson, CA 90745
310-835-7500 • air@anemostat.com
www.anemostat-hvac.com

AGENT: _____

ARCH. /ENG. :		
CONTR. :		
PROJECT :		
EDR: _____	ECN: _____	JOB: _____
DATE: _____	DWN. : _____	DWG. : _____

MODEL SL640DR

45° DUAL DRAIN BLADE

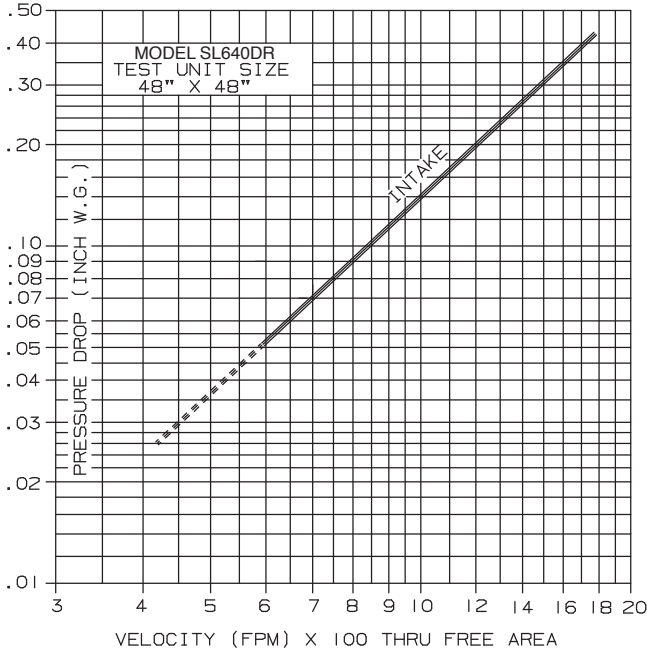
EXTRUDED ALUMINUM - STATIONARY - CONTINUOUS LINE

PERFORMANCE DATA

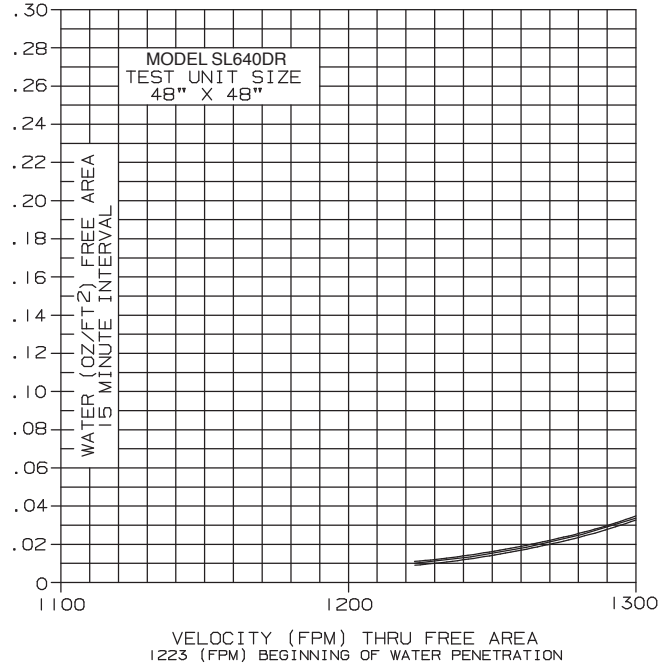
TESTS OF A 48" X 48" SAMPLE ACCORDING TO AMCA STANDARD 500-L SHOWS LOW WATER PENETRATION. TESTS SHOW THE BEGINNING POINT .01 OZ. PER SQUARE FOOT WATER PENETRATION AT 1223 FPM (FREE AREA VELOCITY) WITH LESS THAN .22 INCH W.G. PRESSURE DROP (INTAKE).

RATINGS DO NOT INCLUDE THE EFFECT OF BIRDSCREEN.

PRESSURE DROP



WATER PENETRATION



FREE AREA

HEIGHT	FREE AREA (SQ. FT.)																		
	WIDTH																		
	12"	18"	24"	30"	36"	42"	48"	54"	60"	66"	72"	78"	84"	90"	96"	102"	108"	114"	120"
12"	.23	.38	.52	.67	.81	.96	1.10	1.25	1.39	1.54	1.68	1.83	1.97	2.12	2.26	2.41	2.56	2.70	2.85
24"	.77	1.26	1.75	2.23	2.72	3.21	3.70	4.18	4.67	5.16	5.64	6.13	6.62	7.11	7.59	8.08	8.57	9.06	9.54
36"	1.24	2.02	2.81	3.59	4.37	5.15	5.94	6.72	7.50	8.29	9.07	9.85	10.64	11.42	12.20	12.98	13.77	14.55	15.33
48"	1.78	2.91	4.03	5.16	6.28	7.41	8.40	9.66	10.78	11.91	13.03	14.16	15.28	16.41	17.53	18.66	19.78	20.91	22.03
60"	2.33	3.79	5.26	6.73	8.20	9.67	11.14	12.61	14.08	15.54	17.01	18.48	19.95	21.42	22.89	24.36	25.83	27.29	28.76
72"	2.82	4.60	6.38	8.16	9.94	11.72	13.50	15.28	17.06	18.83	20.61	22.39	24.17	25.95	27.73	29.51	31.29	33.07	34.85
84"	3.30	5.38	7.46	9.54	11.62	13.70	15.78	17.87	19.95	22.03	24.11	26.19	28.27	30.35	32.44	34.52	36.60	38.68	40.76
96"	4.02	6.56	9.11	11.65	14.19	16.73	19.27	21.81	24.35	26.89	29.43	31.97	34.51	37.06	39.60	42.14	44.68	47.22	49.76
108"	4.38	7.14	9.91	12.68	15.44	18.21	20.97	23.74	26.50	29.27	32.04	34.80	37.57	40.33	43.10	45.86	48.63	51.39	54.16
120"	4.88	7.96	11.04	14.13	17.21	20.29	23.37	26.45	29.54	32.62	35.70	38.78	41.87	44.95	48.03	51.11	54.19	57.28	60.36



WATER
PENETRATION



AIR
PERFORMANCE

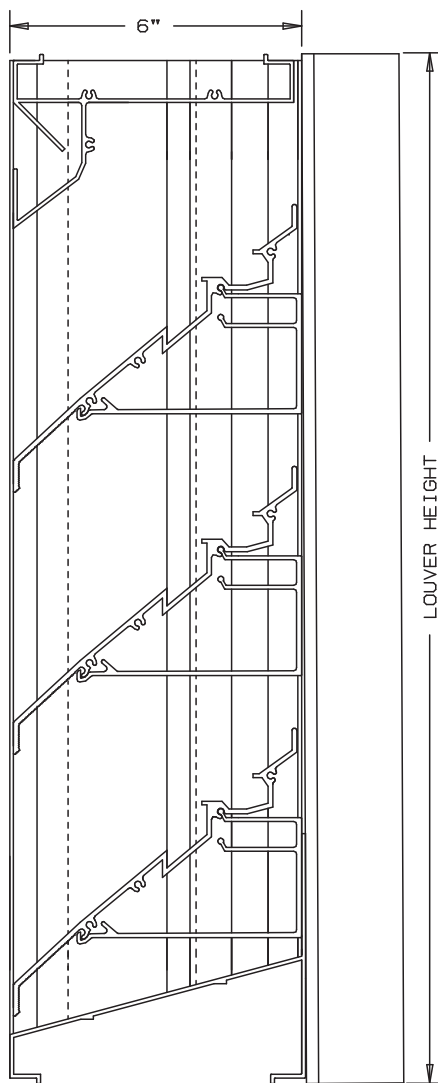
Anemostat certifies that the performance data shown has been determined by test in accordance with applicable AMCA standards.



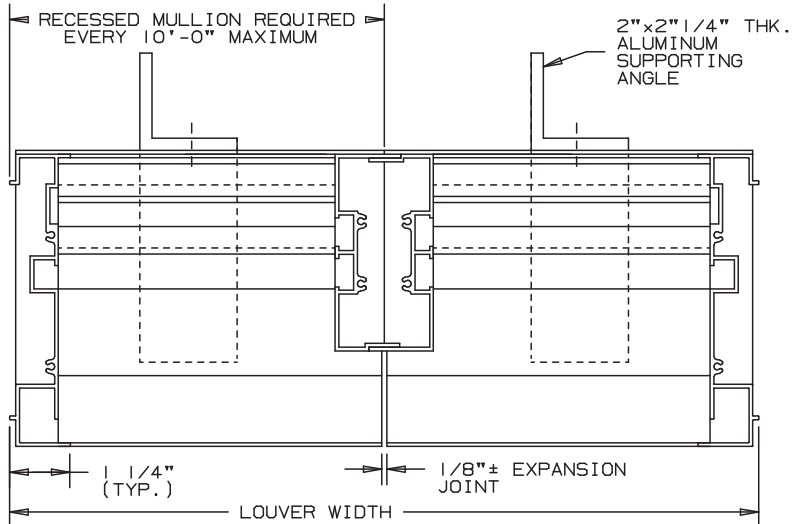
Anemostat®
AIR DISTRIBUTION

MODEL **SL640DR**
EXTRUDED ALUMINUM LOUVERS
6" DEEP - CONTINUOUS LINE
RECESSED MULLION STYLE

DRAIN BLADE-CONTINUOUS LINE-STATIONARY-CHANNEL TYPE



NOT TO SCALE



LOUVER HEIGHT

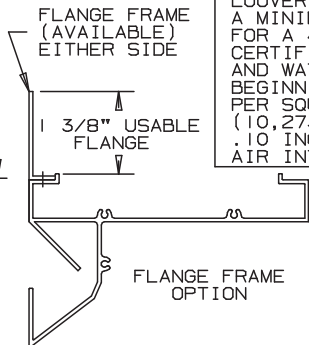
SPECIFICATIONS

MATERIAL: EXTRUDED ALUMINUM 6063-T6/T52 ALLOY
FRAMES: .081" THK. (NOMINAL)
BLADES: .125" THK. (NOMINAL)
FACE OF LOUVER: FULL WIDTH SILL WITH THE HEAD AND BLADES CONTAINED WITHIN JAMBS. BLADE IS 45° ON APPROXIMATE 5 3/8" BLADE CENTERS.
SCREEN: (WHEN INDICATED, IN A REMOVABLE FRAME)
BIRD SCREEN - 1/2" FLATTENED ALUMINUM, .051" THK.
OR - 1/2" SQ. MESH INTERMEDIATE DOUBLE-CRIMPED ALUMINUM WIRE, .063" DIA.
OR - 18/16 MESH, .011" DIA. ALUMINUM WIRE INSECT SCREEN.

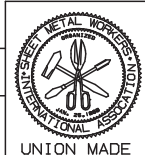
FINISH: _____
MINIMUM PANEL SIZE: 12" x 12"
MAXIMUM SINGLE PANEL SIZE: 120" x 60" OR 60" x 120"

LOUVER PERFORMANCE STATEMENT

LOUVER MODEL SL640DR SHALL BE FABRICATED TO PROVIDE A MINIMUM OF (53%), 8.40 SQUARE FEET OF FREE AREA FOR A 48" x 48" SIZE LOUVER AND BEAR THE AMCA CERTIFIED RATINGS PROGRAM SEAL FOR AIR PERFORMANCE AND WATER PENETRATION. THE RATINGS SHALL SHOW A BEGINNING POINT OF WATER PENETRATION AT .01 OUNCES PER SQUARE FOOT OF FREE AREA TO BE 1223 FPM, (10,273) CUBIC FEET PER MINUTE, WITH LESS THAN .10 INCHES WATER GAUGE PRESSURE DROP AT 800 FPM AIR INTAKE.



NONINAL DEDUCTIONS WILL BE MADE TO THE OPENING SIZE GIVEN.



ITEM	QTY.	WIDTH	HEIGHT	WIDTH	HEIGHT	MULL	TYPE	LOC
		OPENING SIZE		LOUVER SIZE				

Anemostat Air Distribution
1220 E. Watson Center Road
Carson, CA 90745
310-835-7500 • air@anemostat.com
www.anemostat-hvac.com

AGENT : _____

ARCH./ENG. :		
CONTR. :		
PROJECT :		
EDR: _____	ECN: _____	JOB: _____
DATE: _____	DWN. : _____	DWG. : _____