

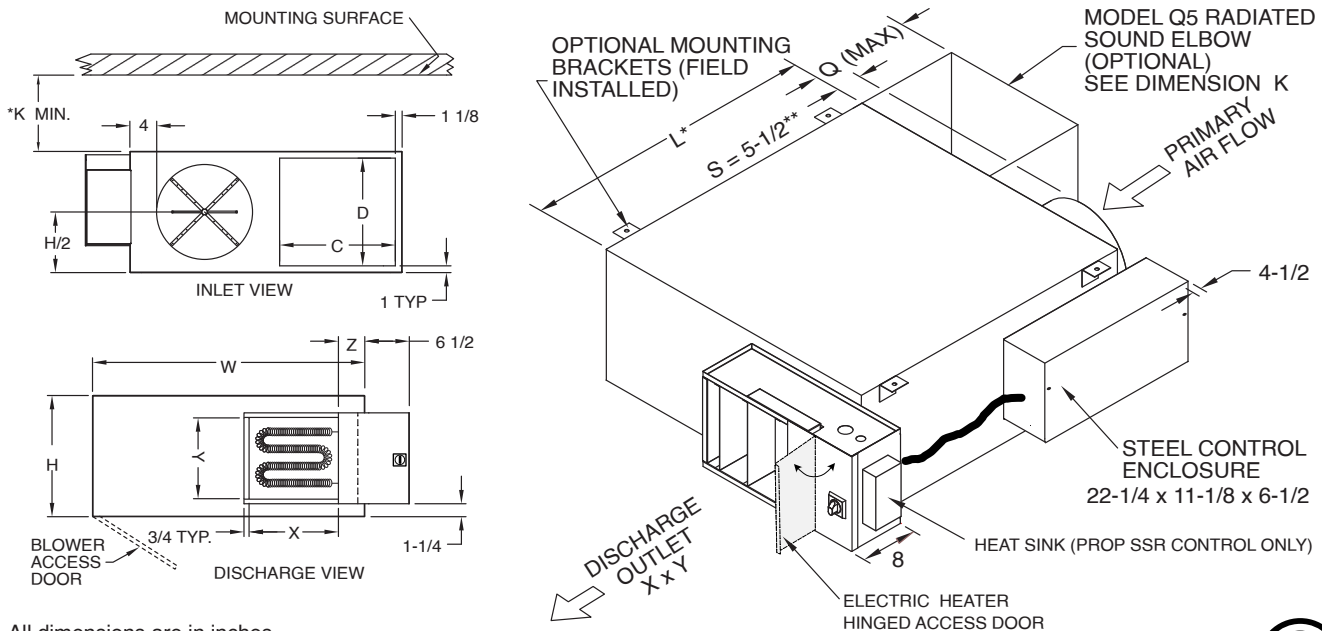
# SUBMITTAL SHEET

WITH INTEGRAL ELECTRIC HEAT  
 AND ECM MOTOR OPTION

www.anemostat-hvac.com

## PRODUCT FEATURES

- AHRI 880 certified / ETL listed (UL 1995).
- Optional:  Q5 Induction Port Sound Elbow
- Single point electrical connection.
- Swing-down blower access panel:
  - Size 1 cabinet 8" vertical clearance for removal, 15-1/2" for 90 degree swing
  - Size 2 cabinet 11" vertical clearance for removal, 17-1/2" for 90 degree swing
  - Size 3 cabinet 10" vertical clearance for removal, 21-1/2" for 90 degree swing
- Steel control enclosure  Screw attached cover  Hinged front cover
- High-efficiency, Energy Saving EC motor.
- Solid state speed controls for stand alone operation or BAS integration.
- Rigid 20 gauge zinc-coated steel construction.
- 1" dual density insulation (NFPA 90A & UL 181).
  - Optional:
    - 1/2"  1" foil-faced glass fiber insulation – metal taped edges (ASTM C665)
    - Double wall construction (22 gauge steel & 1/2" insulation is standard)
    - Lo-Temp casing construction (1" Insulation is standard)
    - 3/8" fiber-less closed cell foam insulation (NFPA255, UL181)
    - No insulation
- 90° inlet damper with leak resistant perimeter seal limiting leakage to <1% of max rated flow at 3" w.g. inlet static pressure.
- Multi-Point center averaging Velocity Wing air flow sensor for accuracy to ± 5% of design flow. Flow taps for air flow measurement provided with factory mounted controls. 3/8" OD sensor lines when controls are field installed.
- Accepts flanged discharge duct connection.
- Left hand control and heater cabinet position.
- Electric coil includes: Nickel-chrome resistance wire, auto reset primary thermal cutout, fan interlock relay (proof of flow), unfused 24vac Class II transformer as required, PE switch or magnetic de-energizing contactor per step.
  - Optional: Supply Power
    - 120v,1ø  240v,1ø  277v,1ø
    - 208v,3ø (4 wire WYE std.)  480v,3ø (4 wire WYE std.)
  - Door interlocking disconnect switch, non-fused
  - Power fusing (fuses & fuse blocks)
- Proof of air flow
  - Fan interlock
  - Air flow switch
  - Manual reset secondary thermal cutout (load carrying)
  - SSR modulating controller
- Optional Accessories:
  - 1" Throw-away filter & filter rack
  - Unit mounting brackets (field installed)
  - Electric actuator, 24vac 3-wire tri-state
- Control System  Electronic Analog  Digital  Pneumatic  Electric  None – No controls
- Control Package \_\_\_\_\_  Field Installed Controls



All dimensions are in inches.

Model QPTE Size	Cabinet Size	ECM Motor H.P.	Nominal Inlet Diameter	H	W	L	Min. K	Discharge			Induction			
								X	Y	Z	C	D	Q	LB
11706, 11707, 11708, 11709	1	1/3	6,7,8,9	15	34	30	6	11-1/2	11	3	13	12	18	108
12506, 12507, 12508, 12509	1	1/3	6,7,8,9	15	34	30	6	11-1/2	11	3	13	12	18	111
21709, 21710, 21712	2	1/3	9,10,12	18	40	34	6	14	12	3	17	16	18	123
22509, 22510, 22512	2	1/3	9,10,12	18	40	34	6	14	12	3	17	16	18	128
25009, 25010, 25012	2	1/2	9,10,12	18	40	34	6	14	12	3	17	16	18	133
35012, 35014, 35016	3	1/2	12,14,16	20	46	40	8	19	16	2-1/4	21	18	20	167
37512, 37514, 37516	3	3/4	12,14,16	20	46	40	8	19	16	2-1/4	21	18	20	172
31012, 31014, 31016	3	1	12,14,16	20	46	40	8	19	16	2-1/4	21	18	20	179



- Notes:**
- Weights are an estimation and will vary based on selection options, insulation type, etc.
  - Add 1" to L dimension and \*\*reduce dimension S to 4 1/2" for double wall and low temperature option.
  - \* K dimension required with optional Q5 sound elbow

JOB NAME:

SUBMITTED BY: