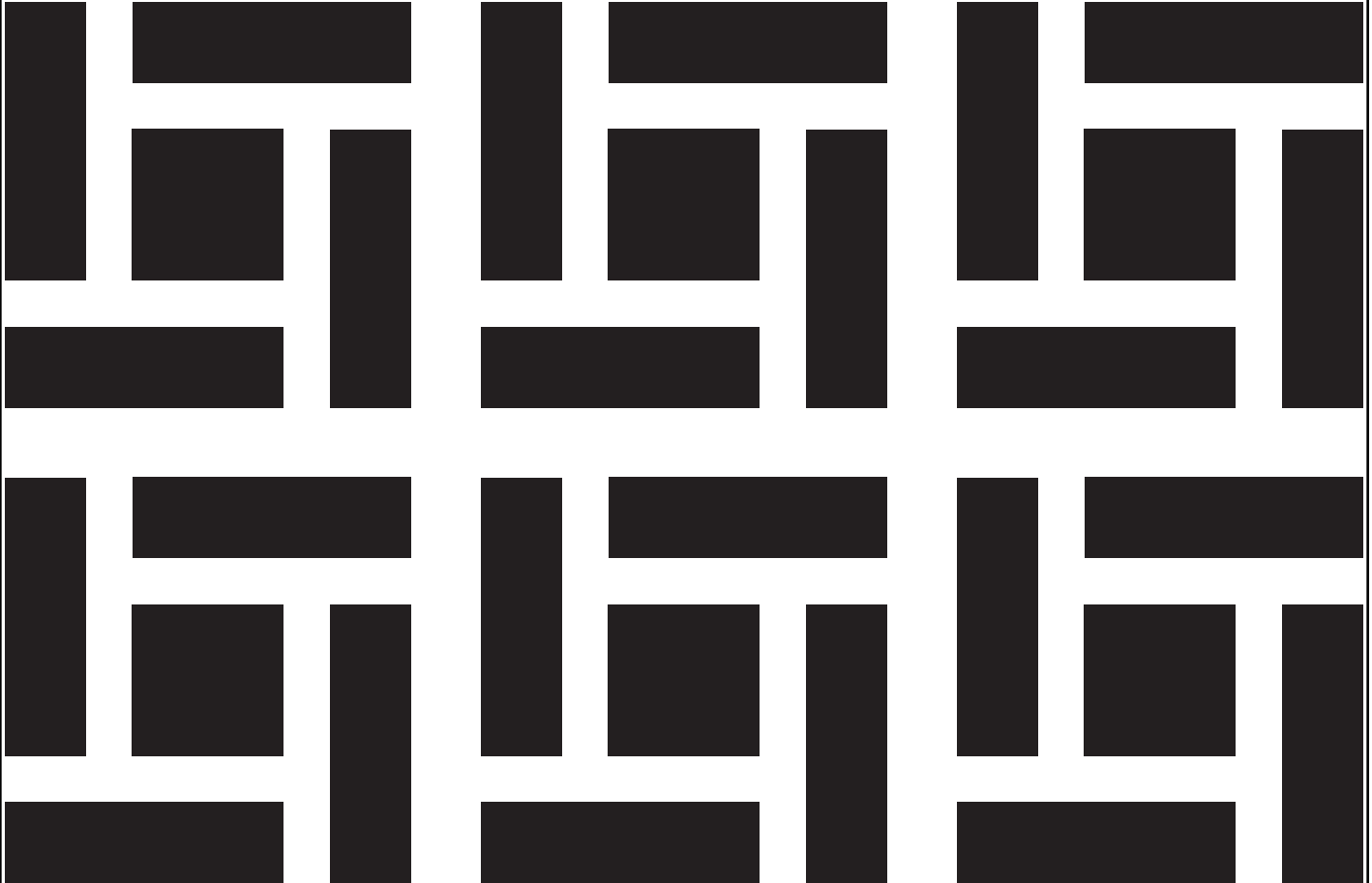


51% Free Area



# Holes / Pattern Repeats	W	H	# Holes / Pattern Repeats	W	H	# Holes / Pattern Repeats	W	H
1	2.187	2.187	6	14.997	14.997	11	27.807	27.807
2	4.749	4.749	7	17.559	17.559	12	30.369	30.369
3	7.311	7.311	8	20.121	20.121	13	32.931	32.931
4	9.873	9.873	9	22.683	22.683	14	35.493	35.493
5	12.435	12.435	10	25.245	25.245			

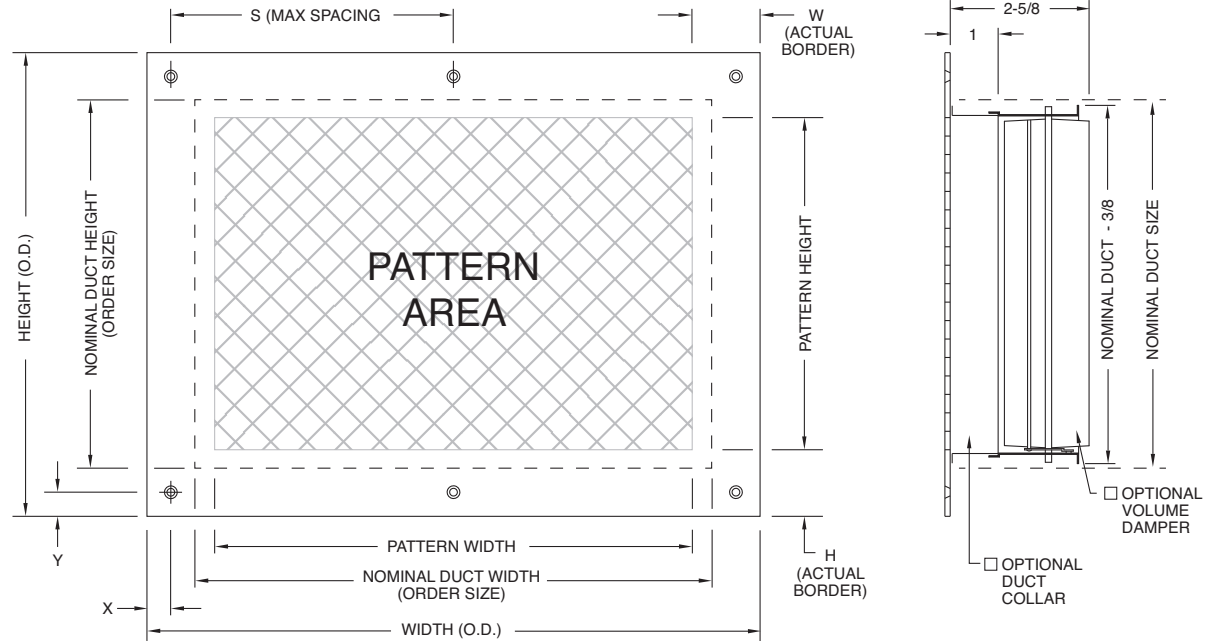
All dimensions are in inches.

JOB NAME:

SUBMITTED BY:

PRODUCT FEATURES

- Decorative stamped grille for use with HVAC supply, return, and transfer applications.
- Many patterns available to enhance appearance of the space.
- Fabricated to exacting specifications for pattern, size, material, gauge, finish, and installation.
- See "How To Specify / Order" for available materials, finishes and options.



Qty	Order Size (Nom Duct Size)		Face Overall Size (O.D.)		Pattern #	Pattern Size		# of Patterns / Holes	Screw Holes / Location / Size / Qty					Actual Border		Material		Finish	Volume Control Damper
	W	H	W	H		W	H		X	Y	S	Size	# Holes	W	H	Type	Thickness		

Notes: Grilles can be fabricated to most any specification. Here are "typical" specifications:

- Face Overall Size = Order Size + 2-1/2"
- Screw Hole Size: #8
- Actual Border calculated based on Order Size, Face Overall Size, and Pattern selected
- Opposed-blade volume damper can be tack welded directly to face. Some minor blemishes may be visible. Damper operator may be difficult to access (behind a fret).

All dimensions are in inches.

SUBMITTAL SHEET

SAG / 12.00 / 12.00 / P11 / 14 / 2.50 / ST / WH / N1

Model _____
SAG - Stamped Architectural Grille

Nominal Duct Width _____
06.00" to 36.00"

Nominal Duct Height _____
06.00" to 36.00"

Pattern Number _____
(see submittal library for available patterns)

Face Gauge _____

- 7 - (3/16")
- 8 - (8 GA)
- 10 - (10 GA)
- 12 - (12 GA)
- 14 - (14 GA)
- 16 - (16 GA)
- 18 - (18 GA)
- 20 - (20 GA)

- Overall Face Size** _____
- 2.00** - Order size plus 2"
(Approx. 1" Border)
 - 2.50** - Order size plus 2-1/2"
(Approx. 1-1/2" Border)
 - 3.50** - Order size plus 3-1/2"
(Approx. 2" Border)

- Material** _____
- ST** - Steel
 - 04** - 304 Stainless Steel
 - 16** - 316 Stainless Steel
 - AL** - Aluminum
 - GZ** - Steel, Galvanized (G90)
 - 280** - Muntz Metal
 - 220** - Commercial Bronze

Options

- C6** - 1" Collar (20 GA thick)
- N1** - No Screw Holes
- 99** - Special Construction
(Provide Details)

Finish

- WH** - Arctic White
- 4P** - Satin Polish
- ML** - Mill Finish
- WE** - White Epoxy
- SV** - Silver
- LB** - Light Bronze
- MB** - Medium Bronze
- CB** - California Bronze
- FB** - Flat Black
- GB** - Gloss Black
- BG** - Beige
- GP** - Grey Primer
- RP** - Rust Inhibiting Prime Coat
- C1** - Custom Color Match #1
Baked Enamel
- C2** - Custom Color Match #2
Baked Enamel
- C3** - Custom Color Match #3
Baked Enamel

Custom Finishing Available

NOTE: Pattern / Material Type / Material Gauge determine availability.
Contact your Anemostat Representative with specific requirements

All dimensions are in inches.