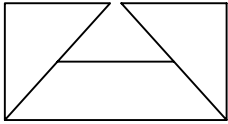


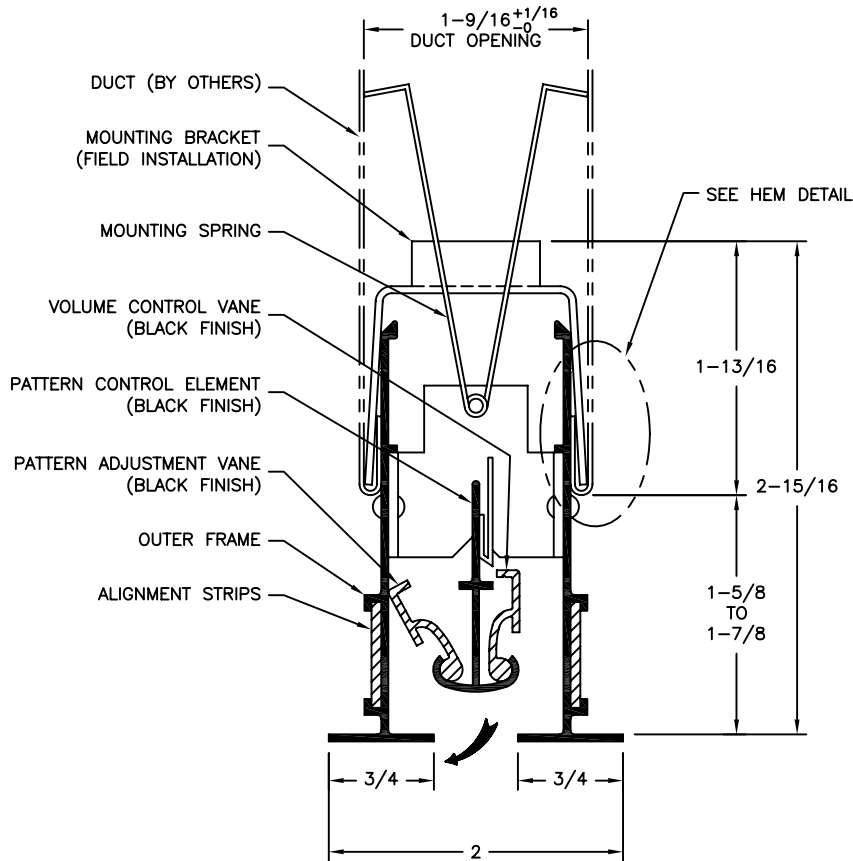
SUBMITTAL SHEET



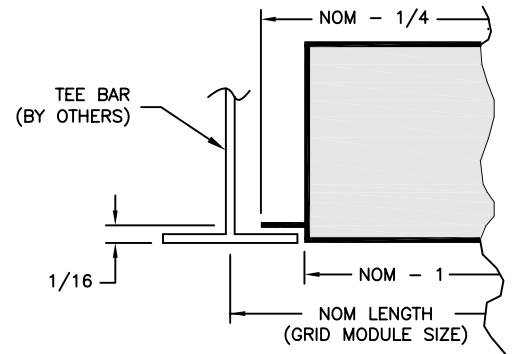
from: **ANEMOSTAT®**

CARSON CA
310-835-7500

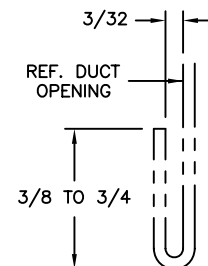
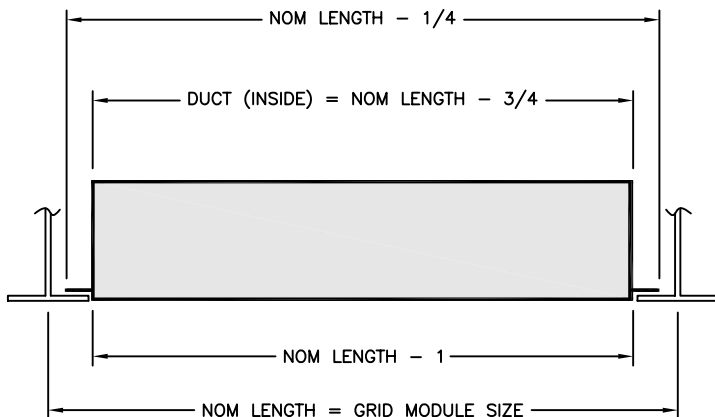
MODEL
SLAD-PL-50
STRAIGHT LINE
ADJUSTABLE DIFFUSER
15/16" LAY IN TEE BAR
1 SLOT - 1/2" SLOT WIDTH



END DETAIL



Material: Aluminum Extrusion
Brackets and hardware: Plated Steel
Finish: White
Brackets and alignment strips furnished for field assembly and installation.



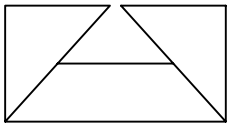
HEM DETAIL

Duct must be hemmed as shown (On sides only)

All Dimensions are in Inches

JOB NAME:	SUBMITTED BY:
LOCATION:	
ARCHITECT:	
ENGINEER:	
CONTRACTOR:	DWG # SLAD-S-0033
	DATE 8-19-08 REV B

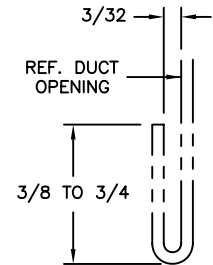
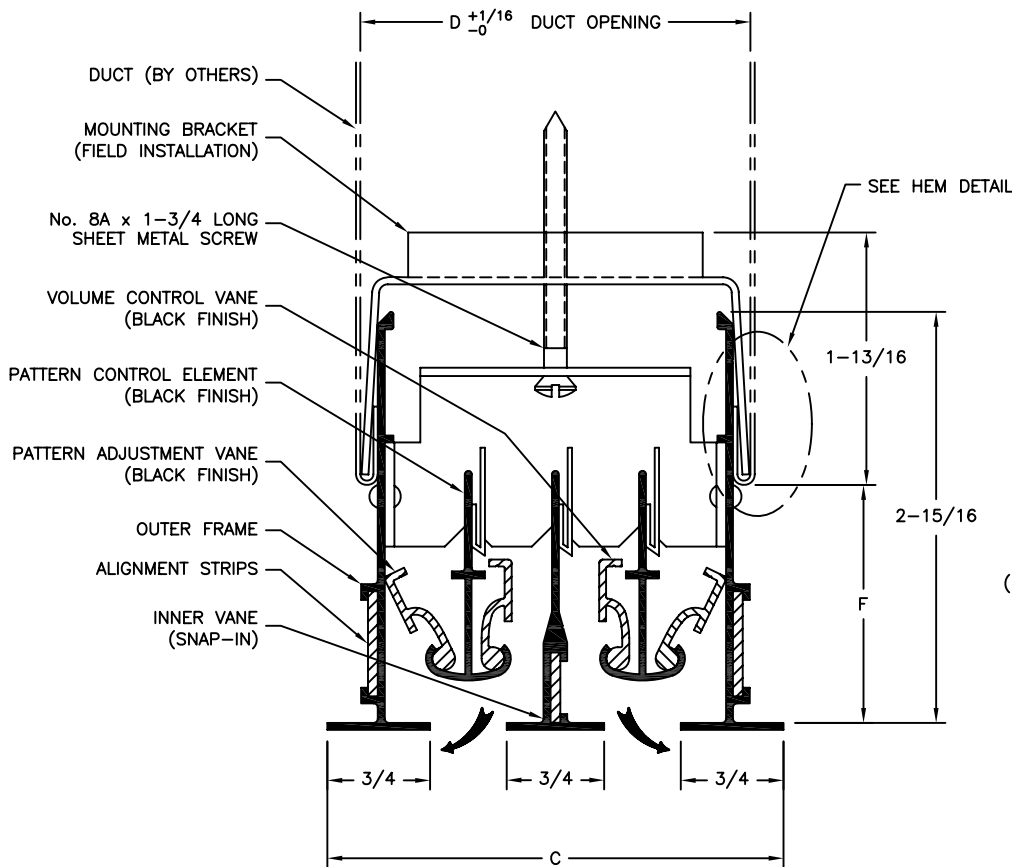
SUBMITTAL SHEET



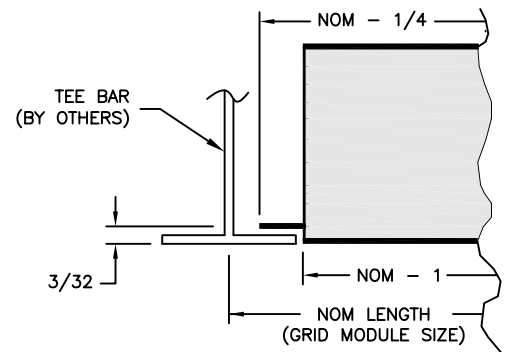
from: **ANEMOSTAT®**
A MESTEK COMPANY

CARSON CA
310-835-7500

MODEL
SLAD-PL-50
STRAIGHT LINE
ADJUSTABLE DIFFUSER
15/16" LAY IN TEE BAR
1/2" SLOT WIDTH

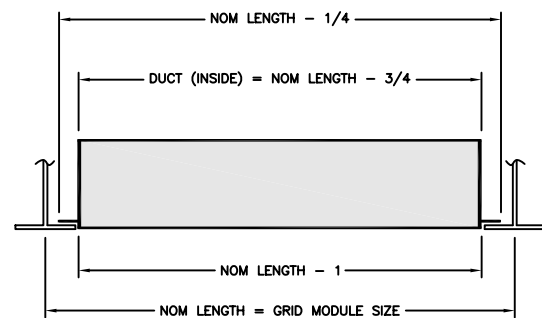


HEM DETAIL
Duct must be hemmed
as shown (On sides only)



END DETAIL

DIFFUSER SIZE	SLAD-PL-50 1/2" SLOT WIDTH		
Number of Slots	C	D	F
2	3-1/4	2-13/16	1-5/8 TO 2-3/8
3	4-1/2	4-1/16	
4	5-3/4	5-5/16	
5	7	6-9/16	
6	8-1/4	7-13/16	
7	9-1/2	9-1/16	
8	10-3/4	10-5/16	



Material: Aluminum extrusions
Brackets & hardware: Plated steel

Finish: White
Brackets and alignment strips furnished
for field assembly and installation.

All Dimensions are in Inches

JOB NAME:	SUBMITTED BY:
LOCATION:	
ARCHITECT:	
ENGINEER:	DWG # LIN-0201
CONTRACTOR:	DATE 8-19-08 REV D