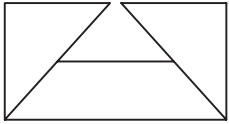


# SUBMITTAL SHEET

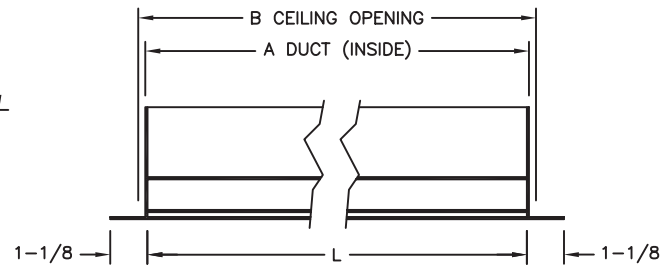
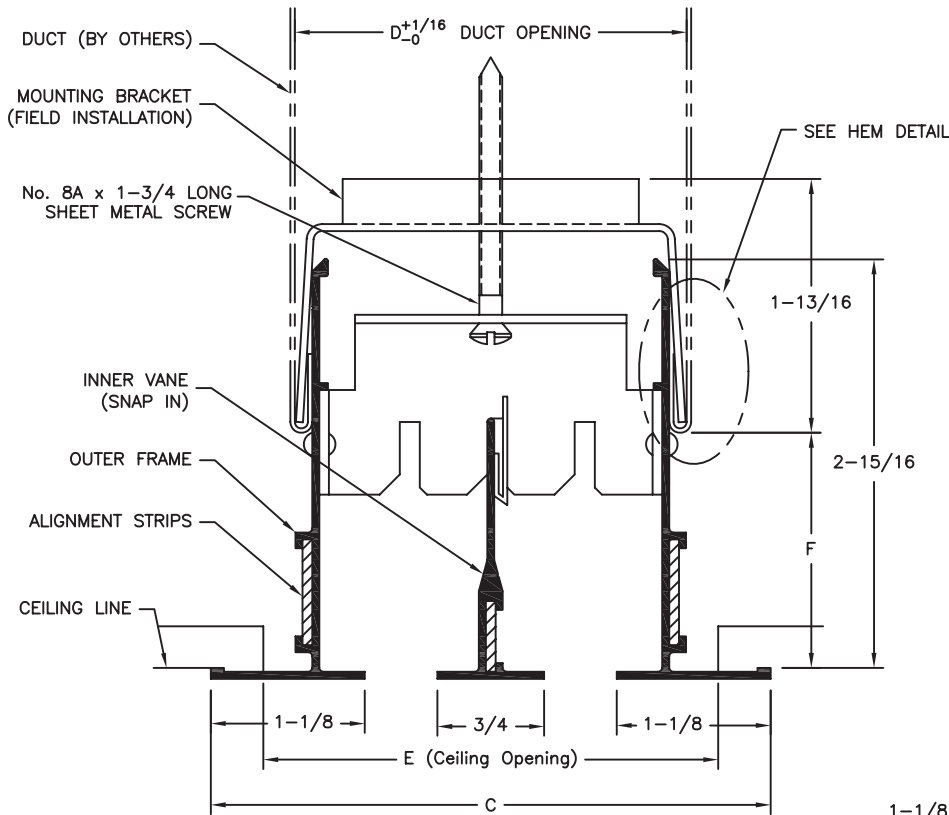


from: **ANEMOSTAT®**

CARSON CA  
310-835-7500

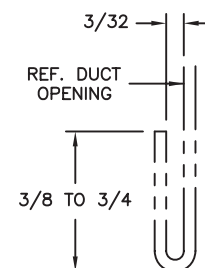
MODEL  
**SLAR-FS-50/75**

STRAIGHT LINE  
LINEAR RETURN  
FLANGE TYPE



L = NOMINAL LENGTH  
A = NOM LENGTH + 1/4  
B = NOM LENGTH + 1/2

DIFFUSER SIZE	SLAR-50 1/2" SLOT WIDTH				SLAR-75 3/4" SLOT WIDTH			
	C	D	E	F	C	D	E	F
1	—	—	—	1-5/8 TO 2-3/8	3	1-13/16	2-1/4	1-5/8 TO 2-3/8
2	4	2-13/16	3-1/4		4-1/2	3-5/16	3-3/4	
3	5-1/4	4-1/16	4-1/2		6	4-13/16	5-1/4	
4	6-1/2	5-5/16	5-3/4		7-1/2	6-5/16	6-3/4	
5	7-3/4	6-9/16	7		9	7-13/16	8-1/4	
6	9	7-13/16	8-1/4		10-1/2	9-5/16	9-3/4	
7	10-1/4	9-1/16	9-1/2		12	10-13/16	11-1/4	
8	11-1/2	10-5/16	10-3/4		13-1/2	12-5/16	12-3/4	



## HEM DETAIL

Duct must be hemmed  
as shown (On sides only)

All Dimensions are in Inches

**Material:** Extruded Aluminum  
Brackets and hardware: Plated Steel  
**Finish:** White  
Brackets and alignment strips furnished  
for field assembly and installation.

JOB NAME:	SUBMITTED BY:
LOCATION:	
ARCHITECT:	
ENGINEER:	
CONTRACTOR:	DWG # LIN-0009
	DATE 8-20-08 REV B