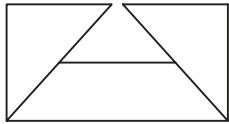


# SUBMITTAL SHEET

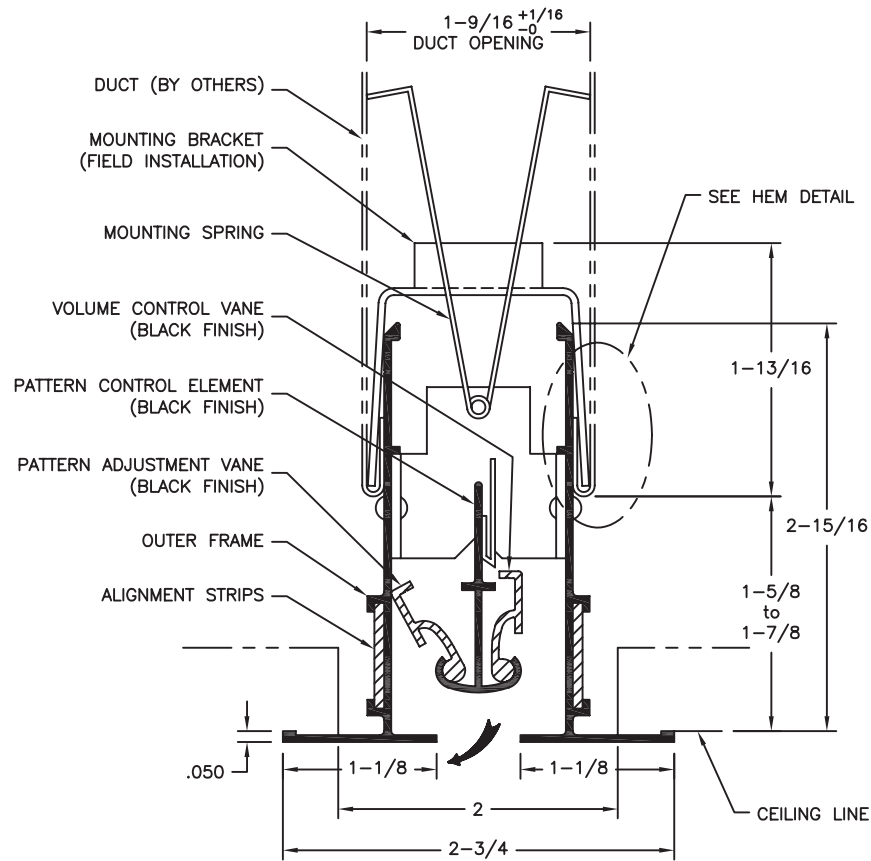


from: **ANEMOSTAT®**

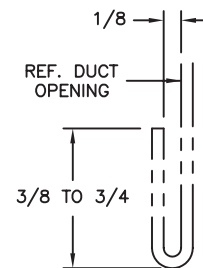
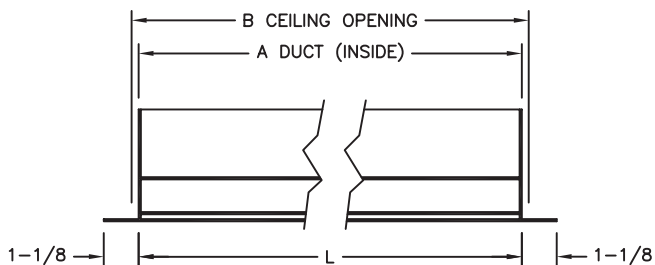
CARSON CA  
310-835-7500

MODEL  
**SLAD-FS-50**

STRAIGHT LINE  
ADJUSTABLE DIFFUSER  
FLANGE TYPE



"L"—NOMINAL LENGTH (24, 36, 48 AND 60)  
"A"—LENGTH OF DUCT (NOMINAL LENGTH + 1/4)  
"B"—LENGTH OF CEILING OPENING (NOMINAL LENGTH + 1/2)



## HEM DETAIL

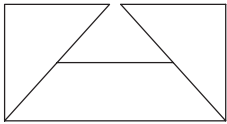
Duct must be hemmed  
as shown (On sides only)

**Material:** Aluminum Extrusions  
Brackets & Hardware: Plated Steel  
**Finish:** White  
Brackets and alignment strips furnished  
for field assembly and installation.

All Dimensions are in Inches

JOB NAME:	SUBMITTED BY:
LOCATION:	
ARCHITECT:	
ENGINEER:	
CONTRACTOR:	DWG # LIN-0011
	DATE 2-17-10 REV B

# SUBMITTAL SHEET

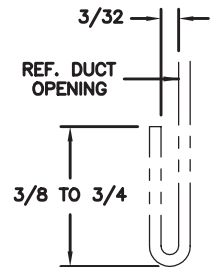
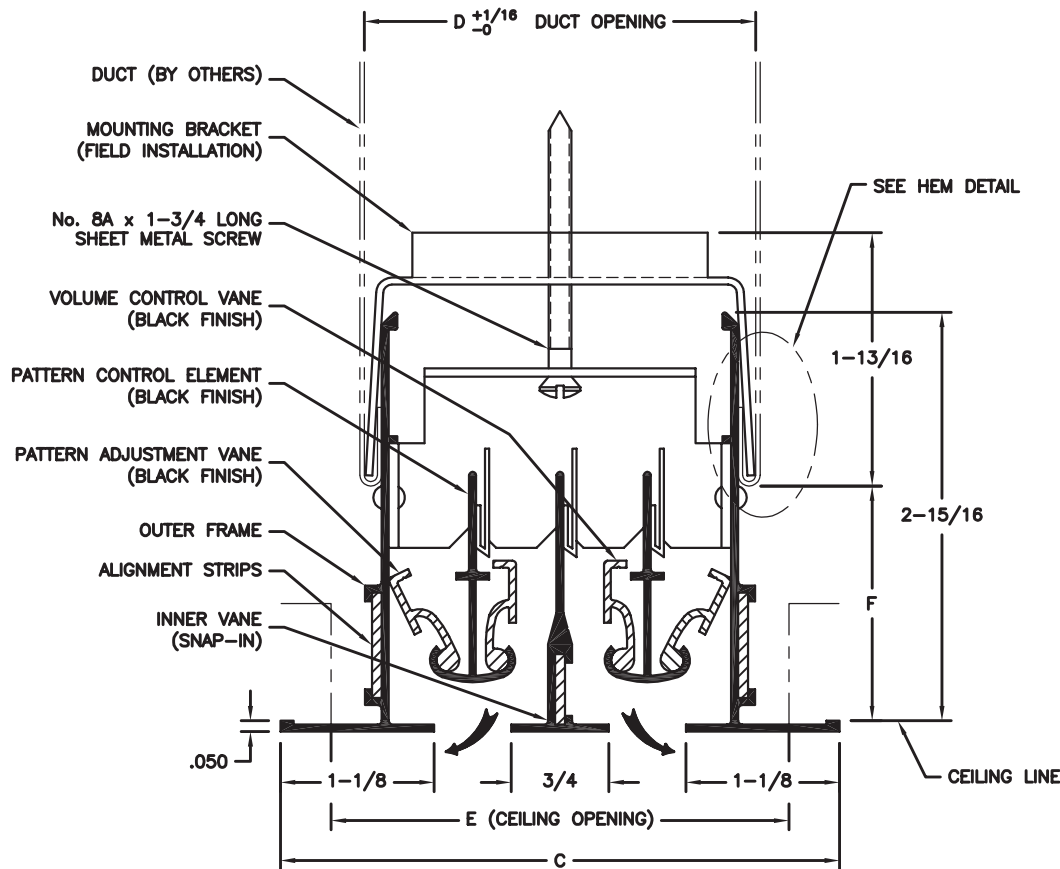


from: **ANEMOSTAT®**

CARSON CA  
310-835-7500

MODEL  
**SLAD-FS-50/75**

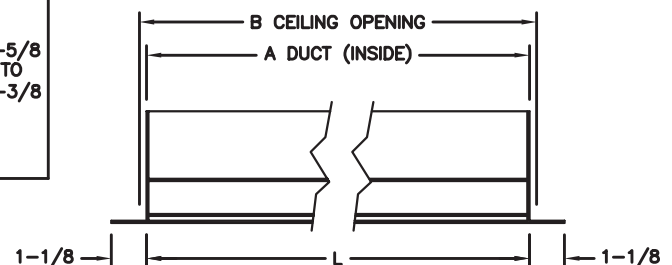
STRAIGHT LINE  
ADJUSTABLE DIFFUSER  
FLANGE TYPE



**HEM DETAIL**  
Duct must be hemmed  
as shown (On sides only)

DIFFUSER SIZE	SLAD-FS-50 1/2" SLOT WIDTH				SLAD-FS-75 3/4" SLOT WIDTH			
Number of Slots	C	D	E	F	C	D	E	F
1	-	-	-	1-5/8 TO 2-3/8	3	1-13/16	2-1/4	1-5/8 TO 2-3/8
2	4	2-13/16	3-1/4		4-1/2	3-5/16	3-3/4	
3	5-1/4	4-1/16	4-1/2		6	4-13/16	5-1/4	
4	6-1/2	5-5/16	5-3/4		7-1/2	6-5/16	6-3/4	
5	7-3/4	6-9/16	7		9	7-13/16	8-1/4	
6	9	7-13/16	8-1/4		10-1/2	9-5/16	9-3/4	
7	10-1/4	9-1/16	9-1/2		12	10-13/16	11-1/4	
8	11-1/2	10-5/16	10-3/4		13-1/2	12-5/16	12-3/4	

"L"—NOMINAL LENGTH (24, 36, 48 AND 60)  
"A"—LENGTH OF DUCT (NOMINAL LENGTH + 1/4)  
"B"—LENGTH OF CEILING OPENING (NOMINAL LENGTH + 1/2)



**Material:** Aluminum extrusions  
Brackets & hardware: Plated steel  
**Finish:** White  
Brackets and alignment strips furnished  
for field assembly and installation.

All Dimensions are in Inches

JOB NAME:	SUBMITTED BY:
LOCATION:	
ARCHITECT:	
ENGINEER:	
CONTRACTOR:	DWG # LIN-0012
	DATE 3-3-05 REV A