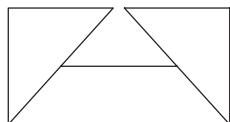


SUBMITTAL SHEET

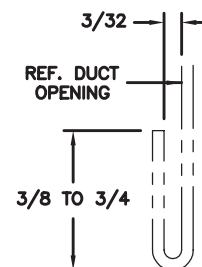
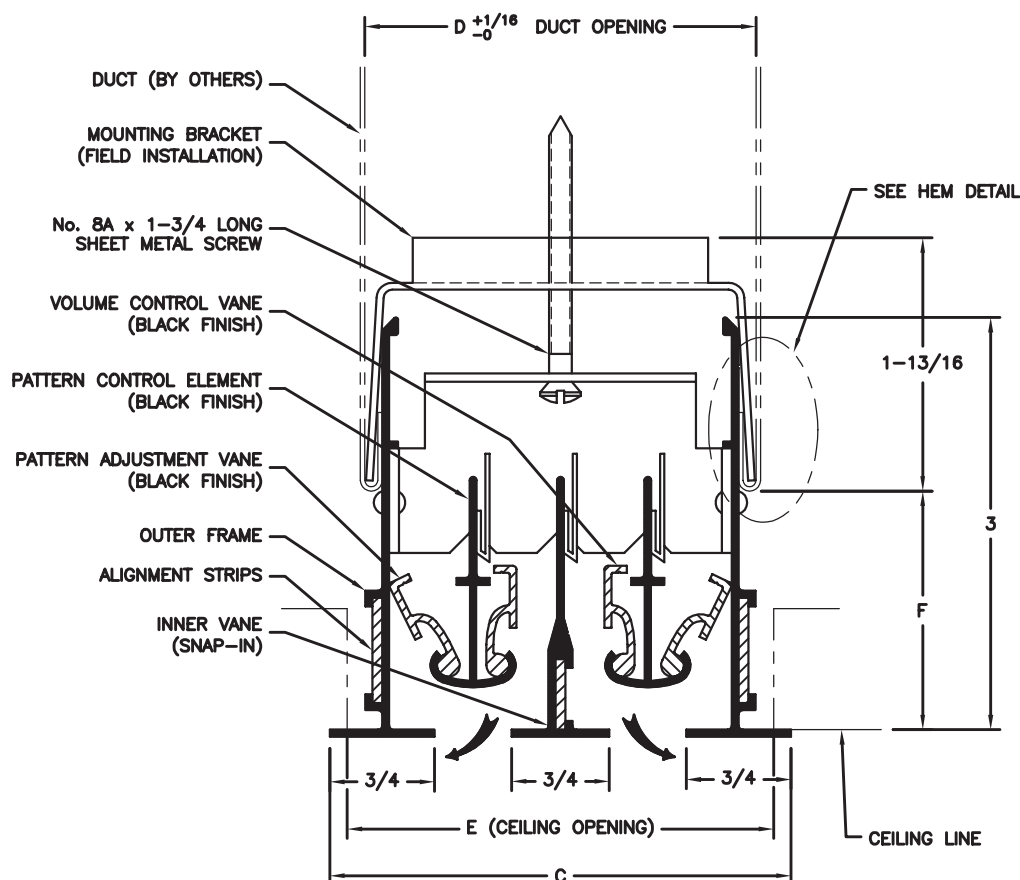


from: **ANEMOSTAT®**

CARSON CA
310-835-7500

MODEL
SLAD-PS-50/75

STRAIGHT LINE
ADJUSTABLE DIFFUSER
FLUSH TYPE



HEM DETAIL
Duct must be hemmed
as shown (On sides only)

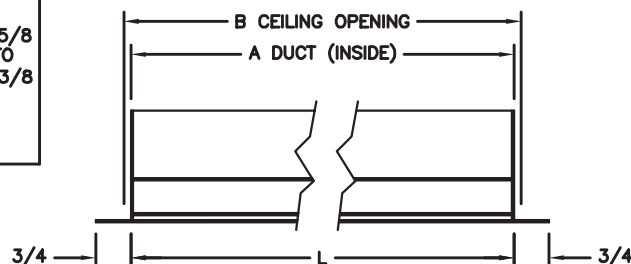
DIFFUSER SIZE	SLAD-PS-50 1/2" SLOT WIDTH				SLAD-PS-75 3/4" SLOT WIDTH			
	C	D	E	F	C	D	E	F
1	—	—	—	1-5/8 TO 2-3/8	2-1/4	1-13/16	2	1-5/8 TO 2-3/8
2	3-1/4	2-13/16	3		3-3/4	3-5/16	3-1/2	
3	4-1/2	4-1/16	4-1/4		5-1/4	4-13/16	5	
4	5-3/4	5-5/16	5-1/2		6-3/4	6-5/16	6-1/2	
5	7	6-9/16	6-3/4		8-1/4	7-13/16	8	
6	8-1/4	7-13/16	8		9-3/4	9-5/16	9-1/2	
7	9-1/2	9-1/16	9-1/4		11-1/4	10-13/16	11	
8	10-3/4	10-5/16	10-1/2		12-3/4	12-5/16	12-1/2	

Material: Aluminum extrusions
Brackets & hardware: Plated steel

Finish: White

Brackets and alignment strips furnished
for field assembly and installation.

"L"—NOMINAL LENGTH (24, 36, 48 AND 60)
"A"—LENGTH OF DUCT (NOMINAL LENGTH + 1/4)
"B"—LENGTH OF CEILING OPENING (NOMINAL LENGTH + 1/2)



All Dimensions are in Inches

JOB NAME:	SUBMITTED BY:
LOCATION:	
ARCHITECT:	
ENGINEER:	
CONTRACTOR:	DWG # LIN-0018
	DATE 3-3-05 REV A