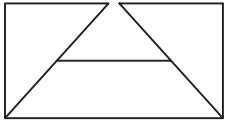


SUBMITTAL SHEET

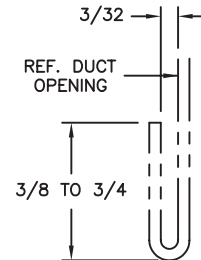
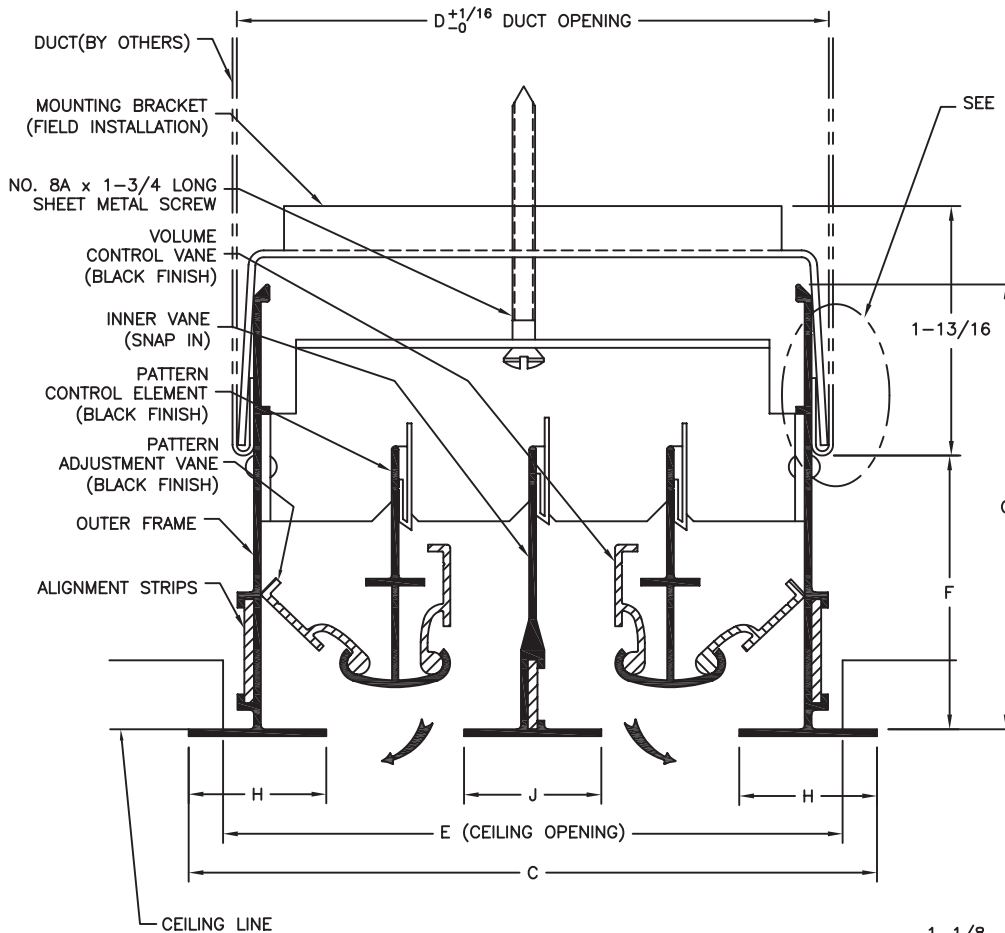


®

from: **ANEMOSTAT®**

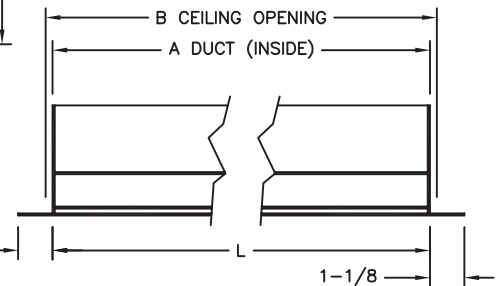
CARSON CA
310-835-7500

MODEL
**SLAD-PS-
100/150**
STRAIGHT LINE
ADJUSTABLE DIFFUSER
FLUSH TYPE



HEM DETAIL
Duct must be hemmed
as shown (On sides only)

"L"—NOMINAL LENGTH (24, 36, 48 AND 60)
"A"—LENGTH OF DUCT (NOMINAL LENGTH + 1/4)
"B"—LENGTH OF CEILING OPENING
(NOMINAL LENGTH + 1/2)



DIFFUSER SIZE	SLAD-PS-100 1" SLOT WIDTH							SLAD-PS-150 1-1/2" SLOT WIDTH						
Number of Slots	C	D	E	F	G	H	J	C	D	E	F	G	H	J
1	3	2-5/16	2-1/2	2 TO 2-3/4	3-9/32	1	1	4-1/2	3-5/16	4	2-7/8 TO 3-5/8	4-5/32	1-1/2	1-1/2
2	5	4-5/16	4-1/2					7-1/2	6-5/16	7				
3	7	6-5/16	6-1/2					10-1/2	9-5/16	10				
4	9	8-5/16	8-1/2					13-1/2	12-5/16	13				
5	11	10-5/16	10-1/2					16-1/2	15-5/16	16				
6	13	12-5/16	12-1/2					19-1/2	18-5/16	19				
7	15	14-5/16	14-1/2					22-1/2	21-5/16	22				
8	17	16-5/16	16-1/2					25-1/2	24-5/16	25				

Material: Extruded Aluminum

Brackets and hardware: Plated Steel

Finish: White

Brackets and alignment strips furnished
for field assembly and installation.

All Dimensions are in Inches

JOB NAME:	SUBMITTED BY:
LOCATION:	
ARCHITECT:	
ENGINEER:	DWG # LIN-0019
CONTRACTOR:	DATE 5-25-06 REV B