

APPLICATION

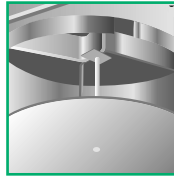
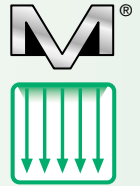
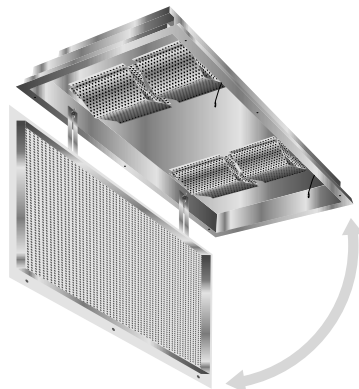
- Multi-Vent laminar flow panels provide a unidirectional "piston" of clean air over critical work envelopes effectively isolating the area from external airborne contaminants
- Laminar flow reduces entrainment of recirculated, contaminated air
- Ideal for use in class 10 to 1000 spaces, including clean rooms and surgical suites
- Carries particles, introduced by humans into the critical area, AWAY from the critical area
- Laminar panels can be utilized individually to cover smaller, critical areas, or built-up into an array of multiple panels covering large areas

PANEL FEATURES

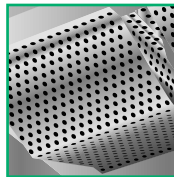
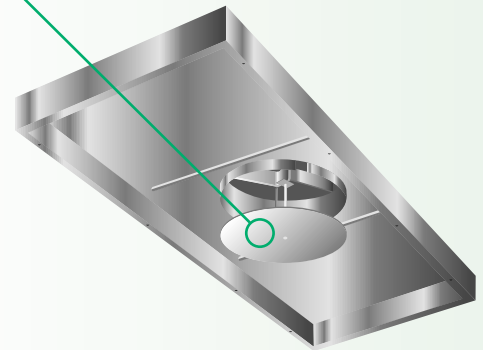
- Original Multi-Vent dual chamber design provides laminar airflow into the space regardless of inlet conditions or damper position by redistributing air from the upper chamber through perforated "V" shaped diffuser baskets into a lower chamber
- Perforated face is 13% open, and removable via 1/4 turn fasteners for cleaning
- Face is hinged/removable and swings down 90° for easy cleaning. Safety cables prevent face from accidentally swinging down.
- Integral hanger brackets
- Balancing damper adjustable from panel face through hole with removable plug
- Closed cell gasket prevents leakage around face
- Available for lay-in T-bar or hard surface ceiling systems

PANEL OPTIONS

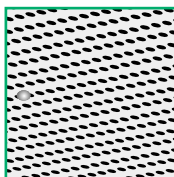
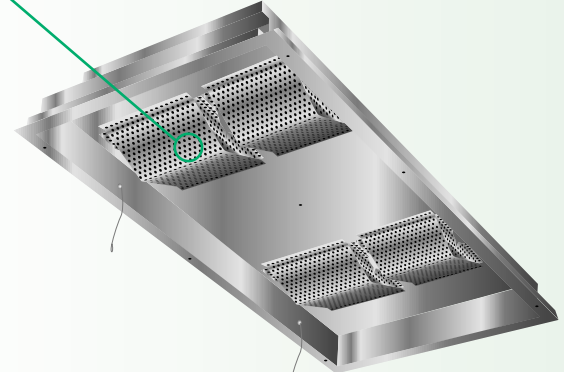
- Model MV-HEP HEPA filtered assembly (page A-18)
- Steel, aluminum, or stainless steel construction
- Higher capacity panels are available for specific applications. Contact the Anemostat Applications Group.
- Arctic white baked-on epoxy finish, or satin polish (stainless steel) finishes available
- Aluminum anodized options, contact factory



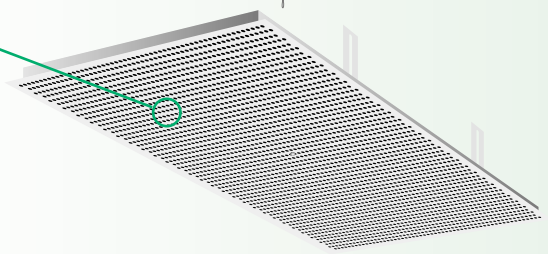
Volume control valve disc for precise air control to suit airflow requirements.



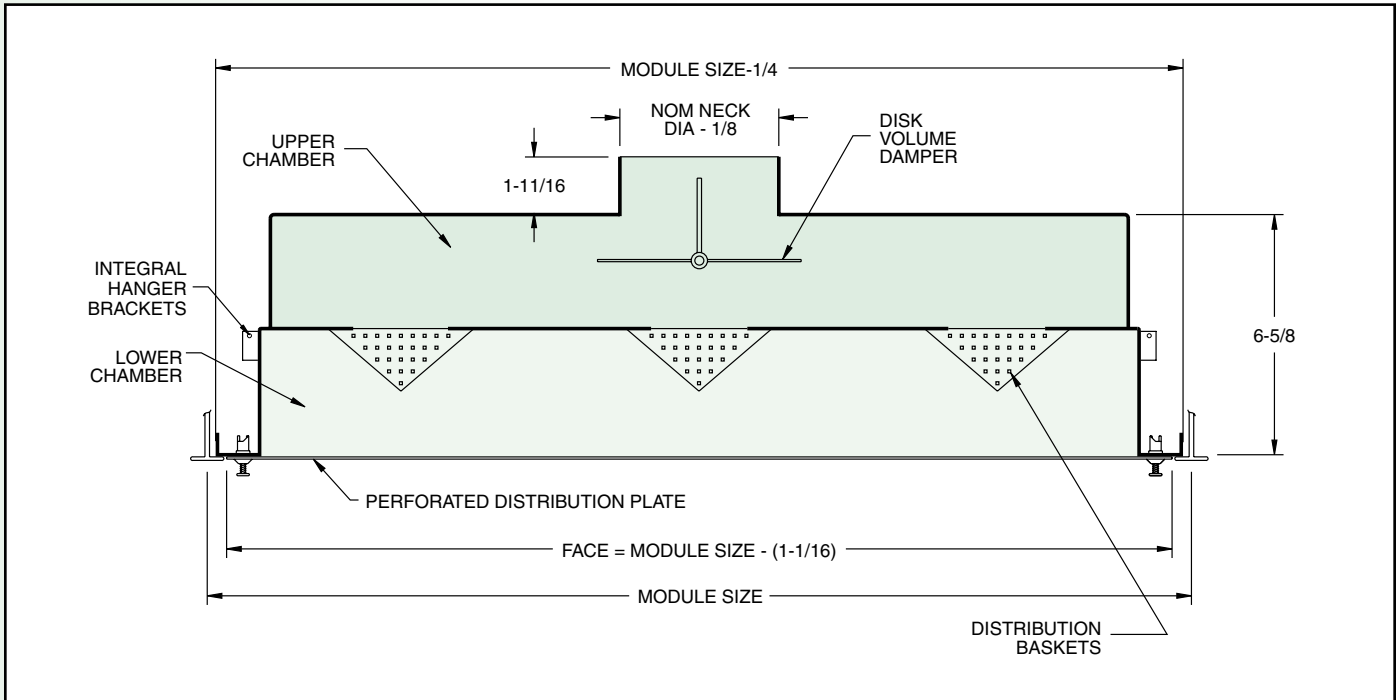
Intermediate diffuser baskets provide improved air flow control; other laminar systems with single "box and perf" construction can't match performance



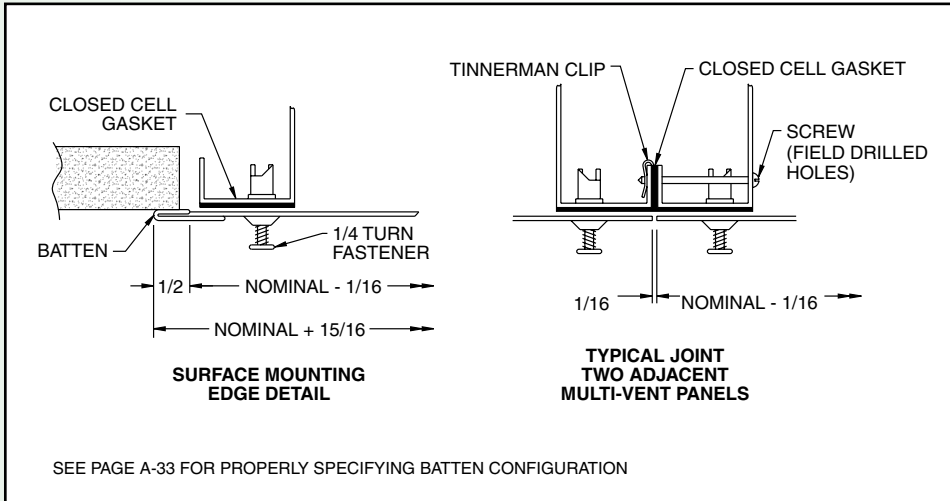
Perforated distribution plate with 13 percent free area as standard.



Model MV-2T - Lay-In T-Bar



Model MV-2P - Surface Mounted



PANEL DIMENSIONS		
Size	Nom. Size	Max Neck Size
122	12 x 24	8" DIA
123	12 x 36	
124	12 x 48	
125	12 x 60	
126	12 x 72	
242	24 x 24	
243	24 x 36	
244	24 x 48	
245	24 x 60	
246	24 x 72	
363	36 x 36	16" DIA
364	36 x 48	
365	36 x 60	
366	36 x 72	

