

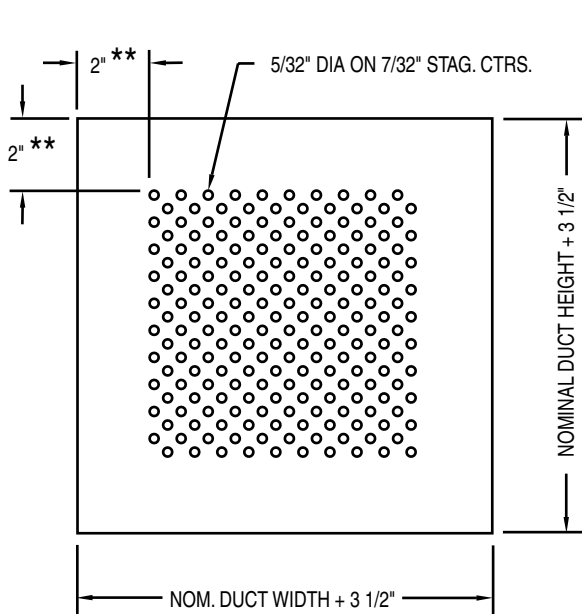
SUBMITTAL SHEET



Anemostat
A MESTEK COMPANY

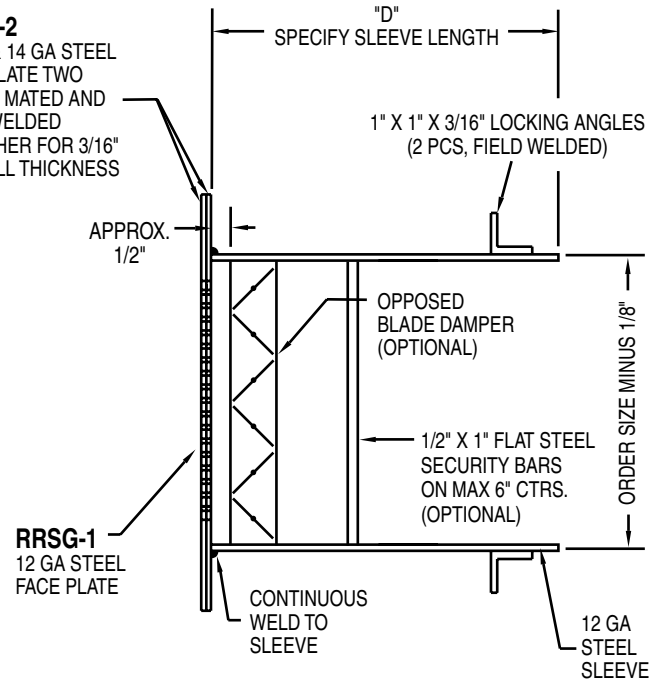
P.O. BOX 4938 • 1220 WATSONCENTER ROAD • CARSON, CA 90745-4206
(310) 835-7500 • FAX (310) 835-0448
e-mail: airsec@anemostat.com • website: www.anemostat.com

RRSG
MAXIMUM SECURITY
EXTRA HEAVY DUTY GRILLE
with STEEL PERFORATED
FACE PLATE(S)
RRSG-1/RRSG-2



RRSG-2

12 GA & 14 GA STEEL
FACE PLATE TWO
PIECES MATED AND
SPOT WELDED
TOGETHER FOR 3/16"
OVERALL THICKNESS



** 2" BORDER APPROXIMATE. THIS DIMENSION IS A FUNCTION OF SIZE AND PATTERN

IMPORTANT: It is the specifier's responsibility to properly configure the HVAC system to meet the appropriate level of comfort, safety, security and detention

PRODUCT FEATURES

Face Plate

- RRS-1: 12 GA. (standard) with 5/32" dia. holes on 7/32" stag. ctrs.
- RRS-2: 12 GA./14 GA. = 3/16" (std)

Sleeve

- 12 GA. (standard)
- 3/16" (optional)
- 10 GA. (optional)
- Other _____

Locking Angles (two pieces)

- 1" x 1" x 3/16" (standard)
- 1-1/2" x 1-1/2" x 3/16" (optional)
- 2" x 2" x 3/16" (optional)
- Other _____

Material

- Cold Rolled Steel (standard)
 - *Stainless Steel (optional)
 - *Aluminum (optional) - RRS-1 only
 - *Galvanized (optional)
 - Other _____
- *consult factory for availability

Security Bars -(optional)

- 1/2" x 1" flat steel (max. 6" ctrs.)
- Other _____

Opposed Blade Damper -(optional)

- Front Operated - requires oversized hole for access to OB operator
- Rear Operated
- Other _____

Anchoring Studs -(optional)

- Nelson Type (3" x 3/8")
- Other _____

Locking Frame -(optional)

- 1" x 1" x 3/16" (field welded)
- Other _____

Adapter -(optional)

- Square to round (shipped loose)

Finish

- White Powder Coat (standard)
- Rust Inhibiting Prime Coat (optional)
- Other _____

Other Options (please specify)

Qty.	Order Size (Nominal Duct)	Sleeve Length
	W" x H"	D

SUBMITTAL APPROVAL

Job Name and Location			
Engineer	Date	Factory	Date
Mfr. Rep.	Date	Submitted By	Date