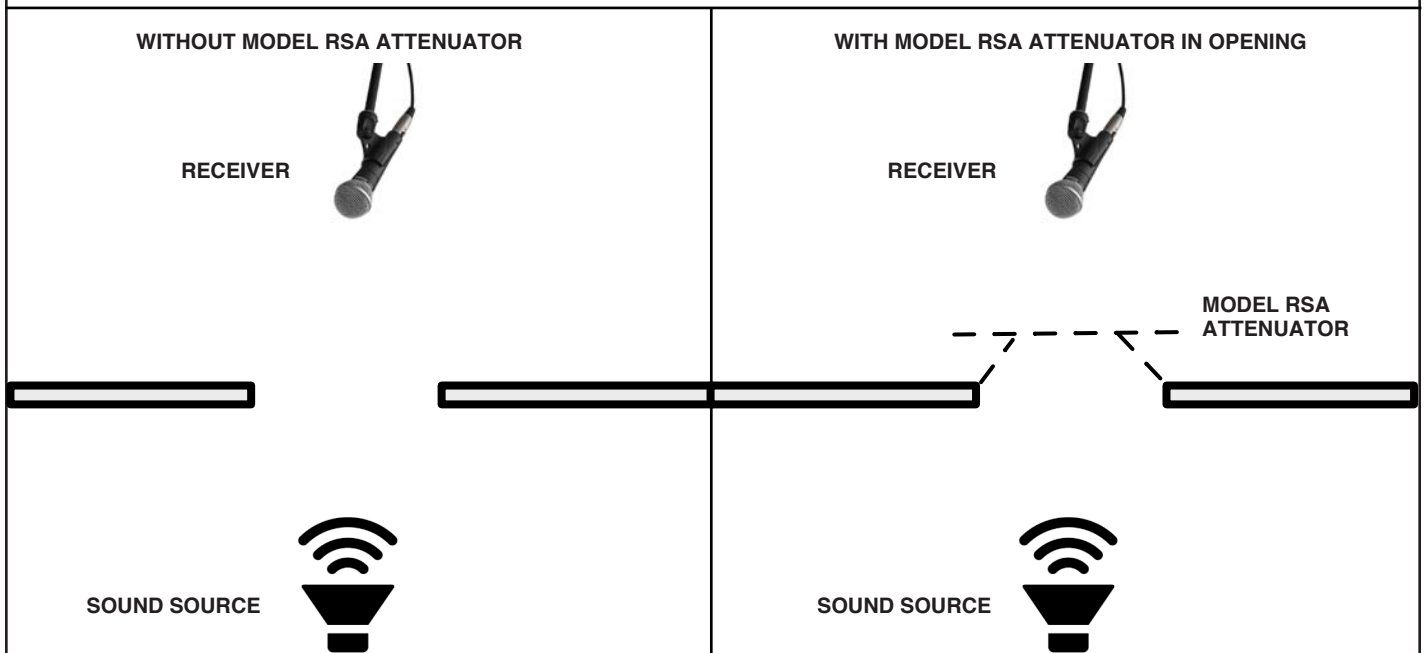
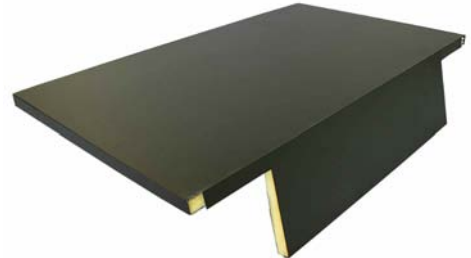


SUBMITTAL SHEET

www.anemostat-hvac.com

PERFORMANCE DATA

- Data was obtained in the Anemostat Reverberation Room, Carson, Ca.
- Model RSA attenuation values were determined by measuring the sound pressure, db, in each octave band on the receiver side with and without the RSA attenuator in the sound path.



Sound Reduction							
Octave Band Center Frequency, Hz							
	125	250	500	1K	2K	4K	8K
Reduction, dB	6	6	8	12	14	18	22

Pressure Drop							
Grille Velocity, fpm	100	200	300	350	400	450	500
Pressure Drop, in w.g.	.01	.04	.09	.12	.15	.19	.24

• DATA FOR MODEL RSA, SIZE 24 X 24

JOB NAME:

SUBMITTED BY: